



111SM2-T



Actual product appearance may vary.

SM Series Subminiature Basic Switch, Single Pole Double Throw (SPDT), 250 Vac, 5 A, Roller Lever Actuator, Solder Termination

Features

- Long operating life
- Elongated mounting hole for easier, more accurate mounting
- Choice of actuation (plunger, as well as a variety of integral and auxiliary actuators)
- Choice of electrical termination (solder, quick connect, PCB)
- Choice of operating characteristics (sensitive differential travel as low as 0,0254 mm [0.001 in] maximum, low operating force to 0,56 N [2.0 oz] maximum)
- Optional series constructions available (gold contacts for low energy switching, bifurcated gold contacts for maximum reliability, power load switching capability to 11 A)
- MIL-PFR-8805 qualified listings available

Potential Applications

- Aerospace
- Instrumentation
- Appliances
- Vending machines
- Timing devices
- Office equipment
- Computer/business equipment
- Test instruments
- Medical/dental equipment
- Communications equipment
- HVAC equipment
- Manually operated devices
- Valves

Description

MICRO SWITCH™ SM Series subminiature basic switches are used for simple or precision on/off application needs. The MICRO SWITCH™ SM Series switches are slightly larger than the MICRO SWITCH™ SX Series switches. These switches combine small size and light weight with ample electrical capacity, precision operation and long life.

Product Specifications

Product Specifications	
Switch Type	MICRO SWITCH™ Subminiature 12,7 mm H x 6,35 mm W x 20,3 mm L [0.5 in H x 0.25 in W x 0.8 in L]
Sealed	No
Ampere Rating	5 A
Circuitry	Single Pole Double Throw (SPDT)
Actuator	Roller Lever
Termination	Solder

Operating Temperature Range	-55 °C to 125 °C [-67 °F to 257 °F]
Voltage	250 Vac
Approvals	CE,CSA,UL,ENEC
Actuator Length	3,05 mm [0.12 in]
Contact Type	Silver
Operating Force (O.F.)	1,95 N [7.0 oz] max.
Release Force (R.F.)	0,56 N [2.0 oz] min.
Pretravel (P.T.)	5,56 mm [0.219 in] max.
Overtravel (O.T.)	0,76 mm [0.030 in]
Differential Travel (D.T.)	0,64 mm [0.025 in] max.
Operating Position (O.P.)	14,3 mm ± 0,76 mm [0.562 in ± 0.030 in]
Housing Material	General Purpose Phenolic
High Temperature	204 °C [400 °F]
CE mark	61058-1
UL File #	E12252
CSA File #	LR41372
Agency Approvals and Standards	1054
Mounting Screw Size	22,1 mm [0.087 in]
Mounting Centers	9,65 mm [0.38 in]
Maximum Tightening Torque	0,26 N m [2.3 in lb]
Weight	2,72 g [0.006 lb]
Package Height	12,4 mm [0.49 in]
Package Width	6,35 mm [0.25 in]
Package Length	19,8 mm [0.78 in]
Recommended For	Flexible leaf with roller
Availability	Global
UNSPSC Code	30211905
UNSPSC Commodity	30211905 Snap switches
Series Name	SM

MICRO SWITCH

A DIVISION OF MINNEAPOLIS-HONEYWELL REGULATOR COMPANY
FREEPORT, ILLINOIS

FED. MFR. CODE 91929

SWITCH - BASIC

CATALOG LISTING
111SM2 - T

DRAWING NUMBER
111SM2 - T

PAGE 1 OF 1

REPLACES

RELEASE NO. SR - 7730

ISSUE

M

9

CHECK K.F.M. 11 AUG 58

CHECK S.K.J. 13 AUG 58

CHECK J.C.R. 12 SEPT 72

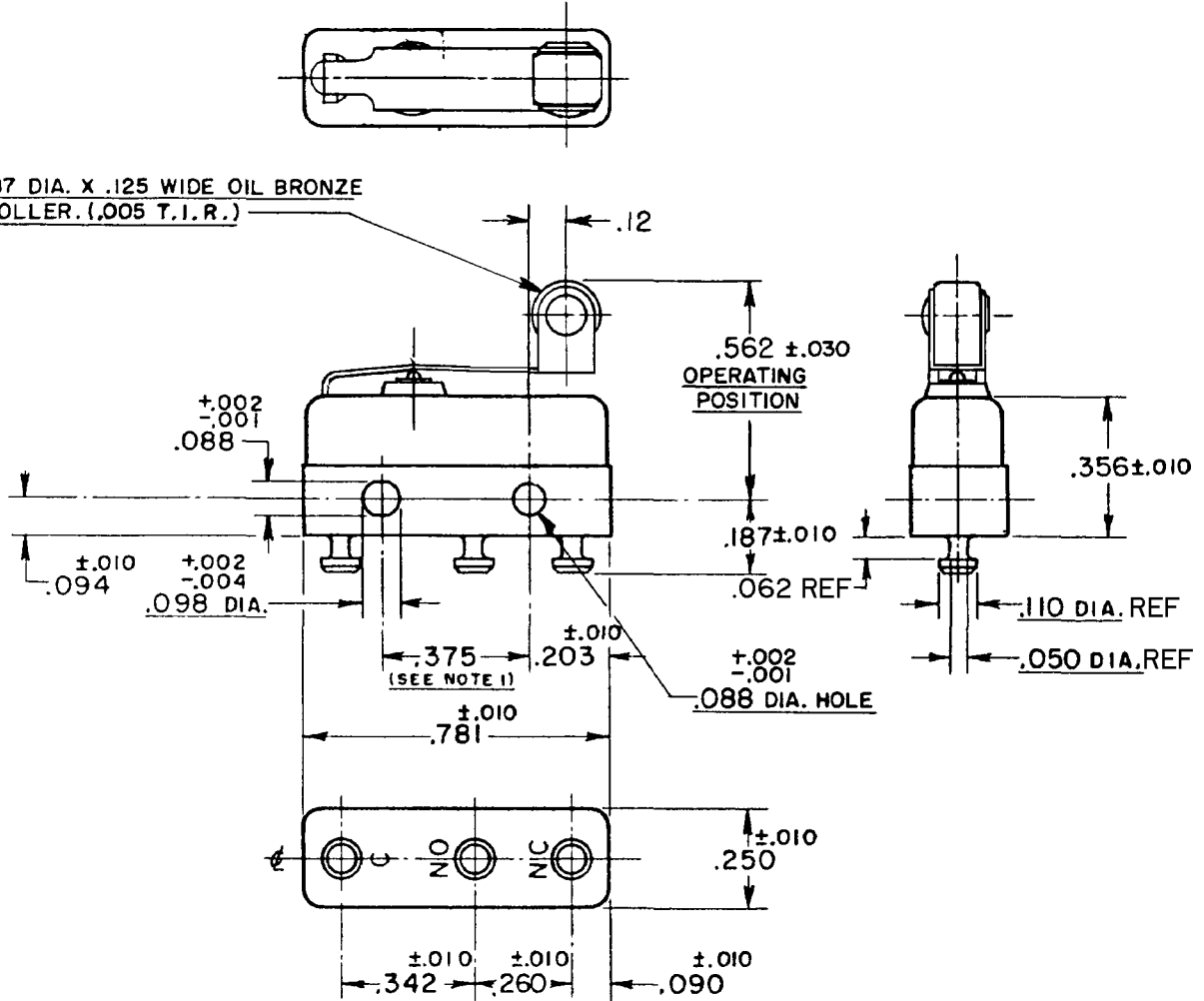
CHECK S.A.D. 12 APR 95

CHECK G.C.H. 19 AUG 58

REVISIONS

A	CO12747
R. J. G.	2 SEPT 58
B	CO14611
Y O	28 APR 60
C	CO18117
J A N	26 JUN 63
D	CO29449
R C R	12 SEPT 72
CO-	77768
S A D	12 JUL 94
F	CO79612
S A D	12 APR 95
G	CO-95172
J J A	17 JUNE 99
H	205616
G J W	21 MAY 02

.187 DIA. X .125 WIDE OIL BRONZE ROLLER. (.005 T.I.R.)



NOTE -

- 1- MOUNTING HOLES WILL ACCEPT PINS OR SCREWS OF .087 MAX. DIA. ON .375 ± .002 CENTERS.
- 2- TERMINALS ARE PLATED FOR SOLDERING.

THIS DRAWING COVERS A PROPRIETARY ITEM AND IS THE PROPERTY OF MICRO SWITCH, A DIVISION OF MINNEAPOLIS-HONEYWELL REGULATOR CO THIS DRAWING IS NOT TO BE COPIED OR USED WITHOUT THE APPROVAL OF MICRO SWITCH

CHARACTERISTICS

OPERATING FORCE ----- 7 OZ. MAX.
 RELEASE FORCE ----- 2 OZ. MIN.
 PRETRAVEL ----- .219 MAX.
 DIFFERENTIAL TRAVEL ----- .025 MAX.
 OVERTRAVEL ----- .030 MIN.

ELECTRICAL DATA

CONTACT ARRANGEMENT
S. P. D. T.

30 VOLTS DC RATING

INDUCTIVE	SEA LEVEL	3 AMP
	50,000 FT.	2.5 AMP
RESISTIVE	SEA LEVEL	5 AMP
	50,000 FT.	5 AMP
MAXIMUM INRUSH		24 AMP

SCALE 2 TO 1

DO NOT SCALE PRINT

UNLESS OTHERWISE SPECIFIED
 DIMENSIONS ARE IN INCHES
TOLERANCES ARE:

ONE PLACE (.0)	± .030
TWO PLACE (.00)	± .015
THREE PLACE (.000)	± .008
ANGLES	±

L4

5A 250 VAC ~



WEIGHT .008 LB MAX

RASTER

FO-50378

DRAWN

K.L.B. 11, AUG. '58