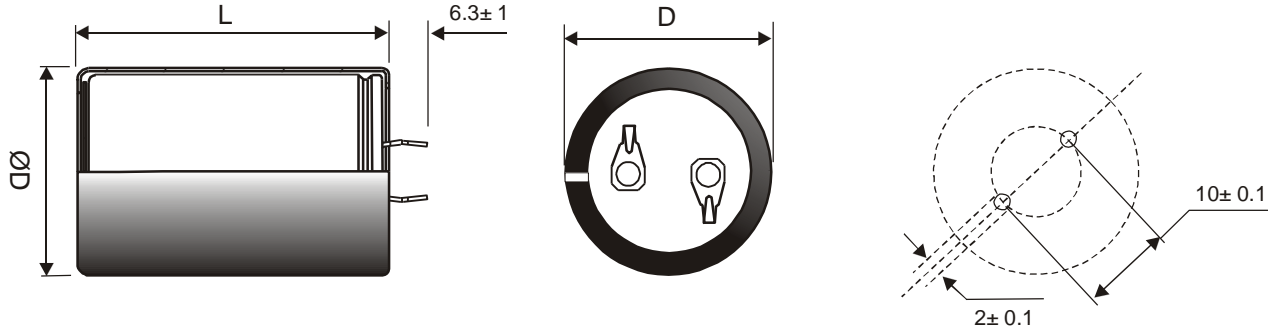


Part Number : PEH532RBI4100M2

Customer :

Customer p/n :



Diameter (mm) 25.5 +/-0.5

Length (L or L2) (mm) 61 +/-1

Terminals

Other Dimensions

Capacitance: 1000 uF

Lower Cap Tolerance: 20 %

Upper Cap Tolerance: 20 %

Working Voltage: 200 V DC

Surge Test Voltage: 230 V DC

ESR 150 m'Ohms MAX @ 100 HZ,20°C

IMPEDANCE 130 m'Ohms MAX @ 10 KHZ, 20°C

0 0

DC LEAKAGE 0.60 mA max @ Test Volts

Test Voltage 200.0V DC

Rated ripple current 1.91 A rms at 100 Hz and 105 °C

Temperature range -40 °C to 105 °C

Expected life = 1500h (Ur, Ir, 105°C, 100Hz) considering EOL at 2x Initial Typical ESR

Approved \_\_\_\_\_ Date \_\_\_\_\_

Form : FM003.DES Iss : 3 Date :30/06/1