

3M™ Fall Protection

Latchways Personal Rescue Device™ (PRD)™ with 3M™ Elavation™ Harness



Rescue

Made Simple

Latchways Personal Rescue Device™ distributed by 3M



In a world of complex rescue solutions, simplified rescue is essential

PERSONAL RESCUE DEVICE

The Latchways Personal Rescue Device™ (PRD)™ is worn with a 3M™ Elavation™ Full Body Harness, and activation is achieved by simply pulling the release cord, allowing for self-rescue. The lightweight, unobtrusive rescue device is contained in a small “backpack” that integrates rescue capabilities into your personal fall arrest equipment. In the event of a fall, the Elavation harness suspends the user and allows the Latchways PRD to gently lower him or her to the ground, unassisted, in a controlled descent. If the user is unable to self-rescue, the device may be activated by another person. The PRD features 65 feet of rope, which is released at a controlled rate through an integral braking mechanism.



WHY CHOOSE THE LATCHWAYS PRD™ WITH 3M™ ELAVATION™ HARNESS

Self-activated
with intuitive mechanism,
NO SPECIALIST
training required

reduces
rescue
time

Elavation™ Premium
Harness

Minimal
pre-use checks

Bring victim
down,
not rescuer up



Less costly
and less complex than traditional
RESCUE PLANS

Simplifies
rescue:
release with a
simple pull

Immediately
available
to worker

rescue plan
for improved safety



7510Q
Elavation™
Premium Fall Protection Harness

Meets **ANSI** standards

TWO OPTIONS FOR RESCUE:

1 SELF-RESCUE

Bring the victim down, not the rescuer up.



2 ASSISTED RESCUE

If the user is not able to self-rescue, the device may be activated by another person using a Latchways Rescue Pole.



The Latchways Rescue Pole activates the PRD's built-in secondary descent release mechanism. Collapsed pole length: 2 ft. 8 inches and 11 ft. 2 inches at full extension.



STANDARDS

The Latchways PRD™ consists of a 3M™ Elavation™ Harness and integral descender device that conforms to the following standards:

The Elavation™ harness conforms to:

- ANSI Z359.1.2007

The Latchways PRD™ conforms to:

- ANSI Z359.4.2007

The “backpack” and harness conform to:

- Waterproof and dustproof IP56 (Ingress Protection)
- -4°F (-20°C) to +140°F (60°C) operating temperature

PRODUCT DETAILS

COMPONENT PARTS | Descent rope lifeline made from UHMWPE rope with Aramid overbraid

DESCENT HEIGHT | 65 ft (20m)

COMPLETE WEIGHT | 7510Q (S-M) 10.6 lbs (4.8kg) / 7510Q (L-XL) 10.7 lbs (4.85kg) / 7510Q (XXL) 10.9 lbs (4.94kg)

SYSTEM CAPACITY | 310 lbs (140kg)

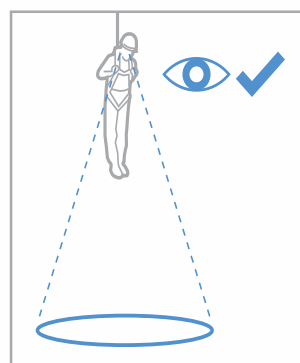
DESCENT SPEED | Up to 6.6 ft (2m) per second

TRAINING | Minimal user training required — no annual user refresher training required

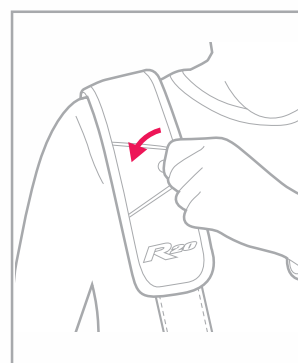
PRE-USE CHECKS | The Latchways PRD™ has been designed to be user-friendly with minimal pre-use checks required. The descent device, harness and backpack should be checked for any signs of use in a descent, damage, corrosion, chemical attack or altering.

MAINTENANCE | Periodic examination is limited to a series of visual inspections carried out by a competent person (full instructions provided).

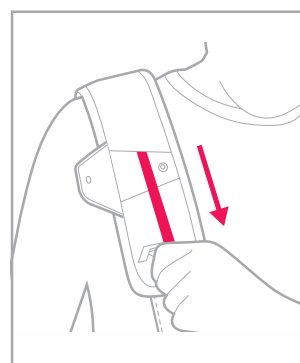
HOW IT WORKS (FOR SELF-RESCUE)



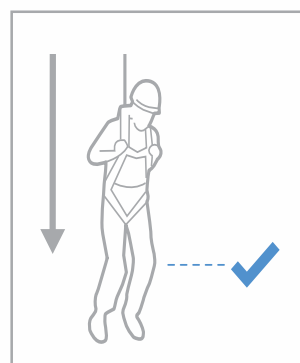
- 1** Check the ground below to ensure descent path is clear and a safe landing is possible.



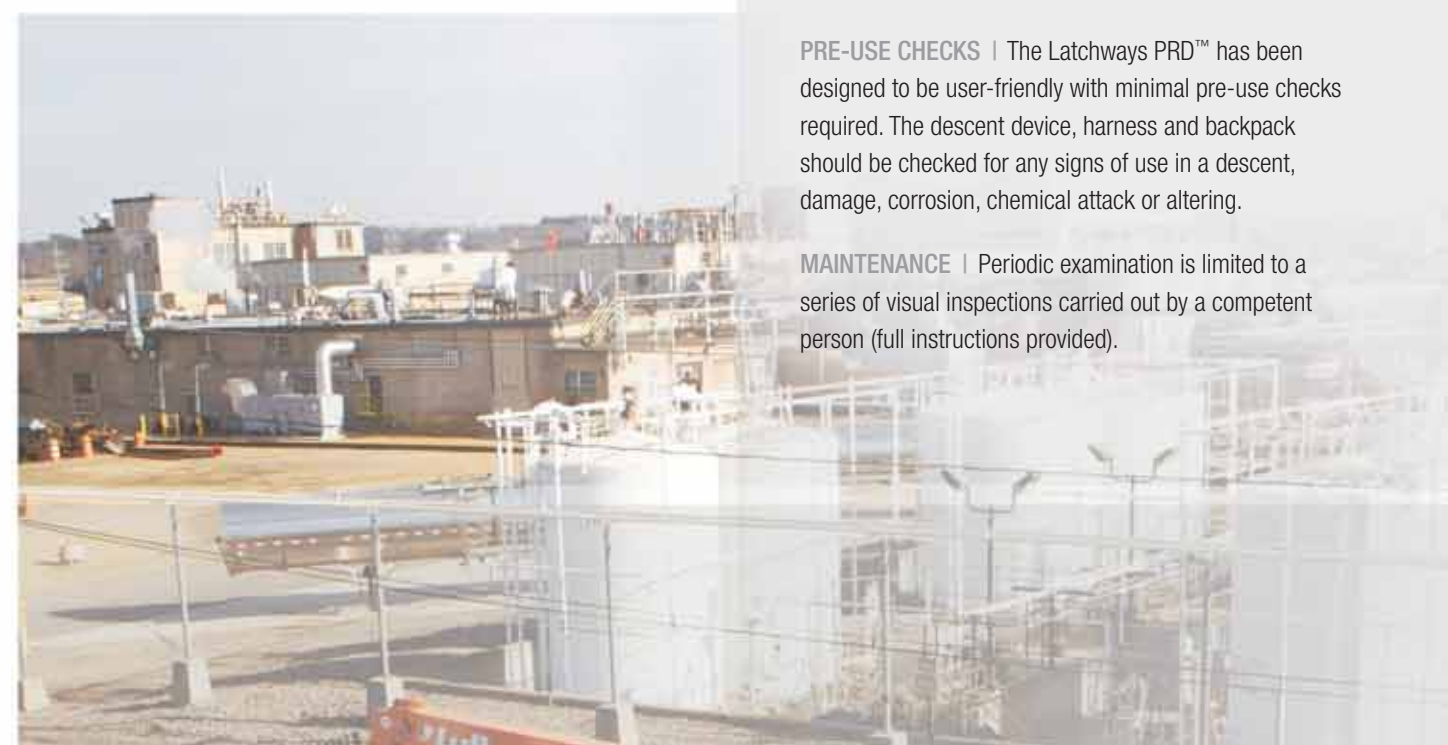
- 2** Open the flap on the right shoulder strap to access the release cord.



- 3** Pull sharply on the release cord.



- 4** Prepare for landing by bending knees slightly.



THE NEED FOR RESCUE PLANS

Rescue Plan Required by OSHA in the U.S.

OSHA 1926.502 (d) (20): The employer shall provide for prompt rescue of employees in the event of a fall or shall assure that employees are able to rescue themselves.

OSHA 1910.66 Appendix C Section III. (g): "Rescue considerations." As required by the standard (section I Paragraph (e)(8)), when personal fall arrest systems are used, the employer must assure that employees can be promptly rescued or can rescue themselves should a fall occur. The availability of rescue personnel, ladders or other rescue equipment should be evaluated. In some situations, equipment which allows employees to rescue themselves after the fall has been arrested may be desirable, such as devices which have descent capability.

Product Codes and Descriptions

PRODUCT NUMBER	PRODUCT NAME	PRODUCT DESCRIPTION
PRD-7510Q (S-M)	Latchways PRD™ with 3M™ Elavation™ Harness 7510Q (S-M)	Elavation Harness, size small-medium, has Quick Connect Buckle Chest and Leg Connection, Back D-ring.
PRD-7510Q (L-XL)	Latchways PRD™ with 3M™ Elavation™ Harness 7510Q (L-XL)	Elavation Harness, size large-XL, has Quick Connect Buckle Chest and Leg Connection, Back D-ring.
PRD-7510Q (XXL)	Latchways PRD™ with 3M™ Elavation™ Harness 7510Q (XXL)	Elavation Harness, size XXL, has Quick Connect Buckle Chest and Leg Connection, Back D-ring.
PRD-RescPole	Latchways Rescue Pole for Latchways Personal Rescue Device™ (PRD)™	Used with Latchways PRD™ to rescue unconscious worker needing rescue. Collapsed length: 2 ft. 8 in. and 11 ft. 2 in. at full extension.

WARNING

Compliant fall protection and emergency rescue systems help prevent serious injury during fall arrest. Users must read and understand the User Instructions provided with the product and be properly trained by their employer prior to use per OSHA 1910.66 and 1926.503 or applicable local standards. Misuse or failure to follow warnings and instructions may result in serious personal injury or death.



Personal Safety Division
3M Center, Building 235-2W-70
Saint Paul, MN 55144-1000
U.S.A.

For More Information

Sales Assistance: 800-328-1667
Technical Service: 800-243-4630 in U.S.A.
800-267-4414 in Canada
Website: www.3M.com/FallProtection



© 3M 2014. All rights reserved.
3M and Elavation are trademarks of 3M Company, used under license in Canada. Latchways, Latchways Personal Rescue Device and PRD are trademarks of Latchways plc.
70-0716-2324-6