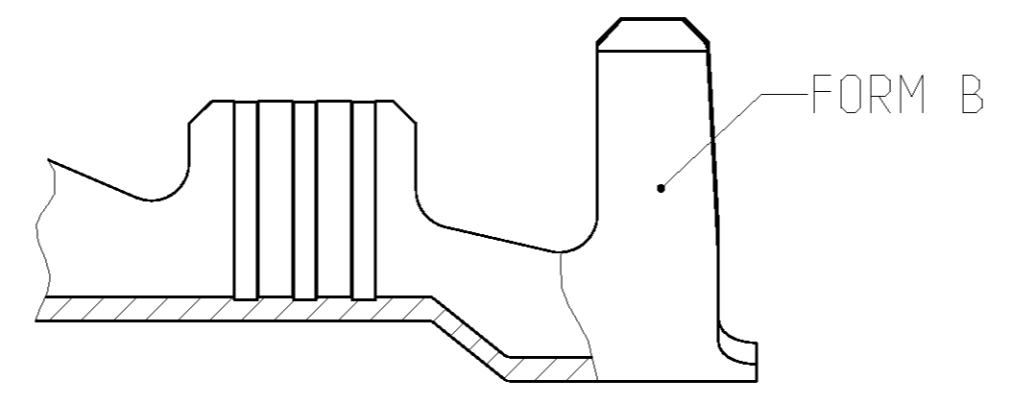
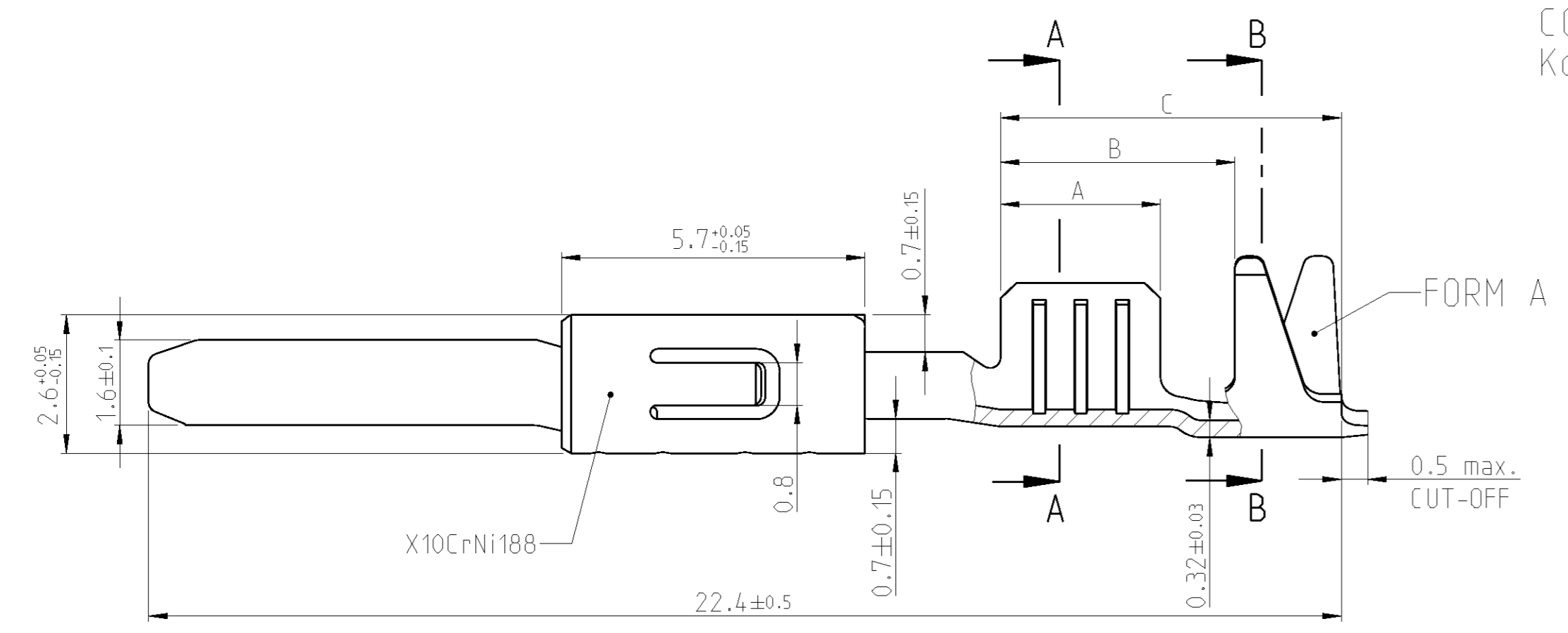
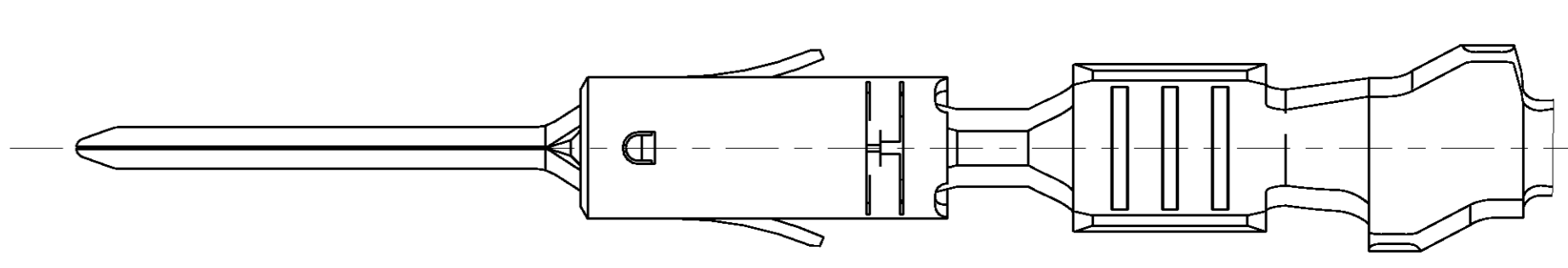
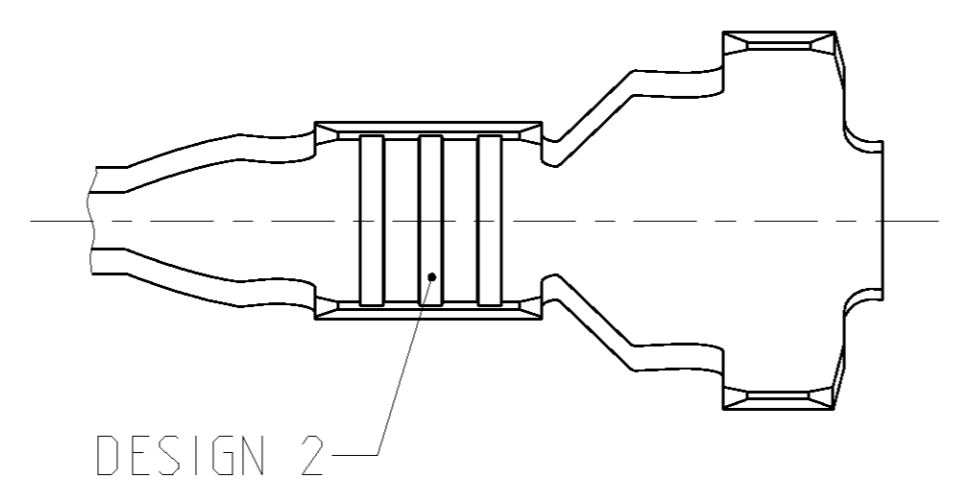
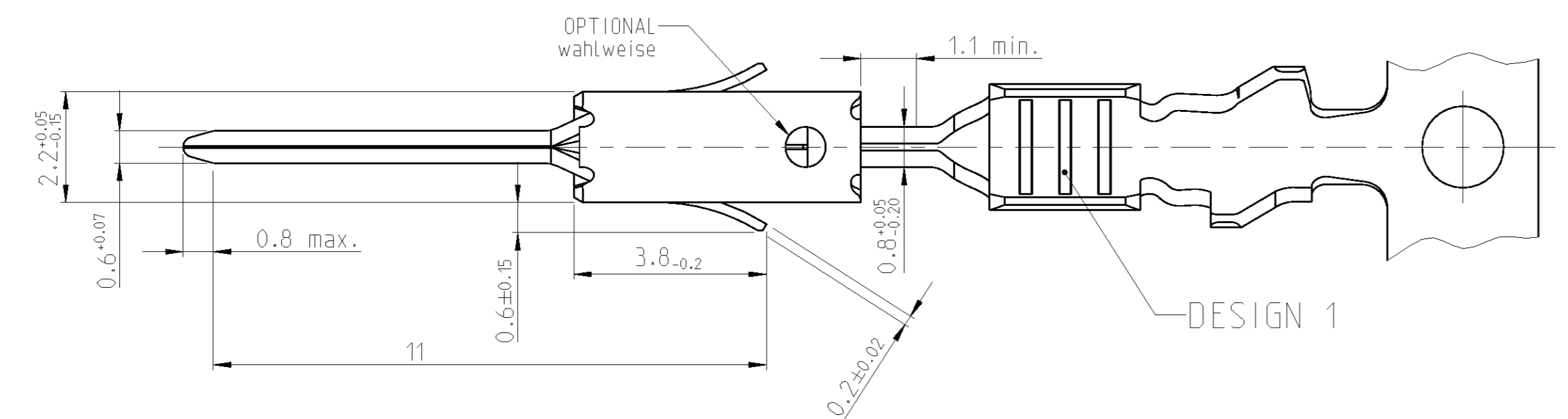
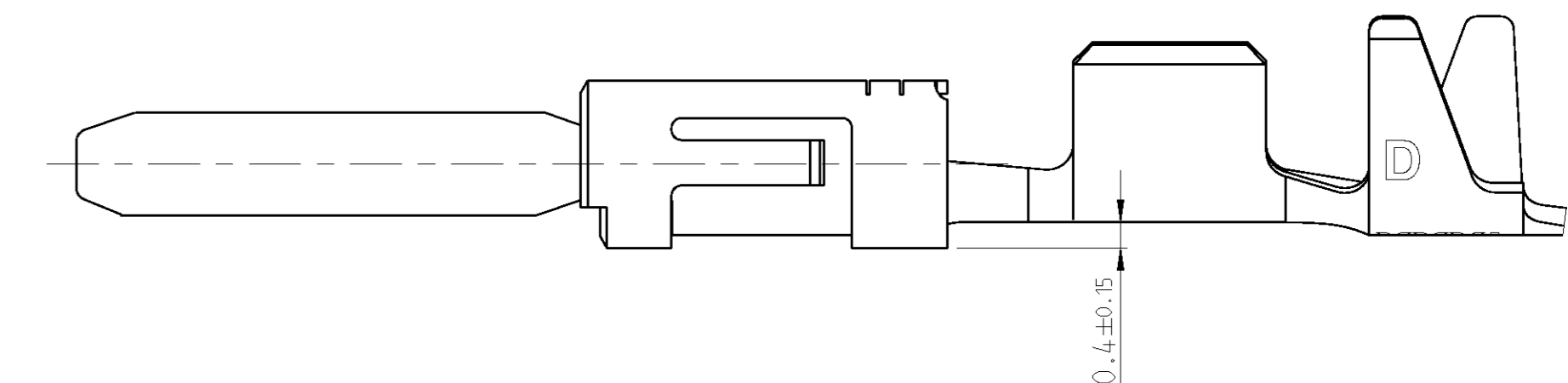


LOC	DIST	REVISIONS			
		REV	DATE	BY	APPV
A1	-	A9	23SEP2009	Mey.	Brun
		A10	14SEP2010	Kirs.	Schus
		A11	07SEP2011	Abr	Schus
		A12	11OCT2011	Abr	Schus

CONTACTS FOR FLR-CABLE
 Kontakte fuer FLR-Leitung

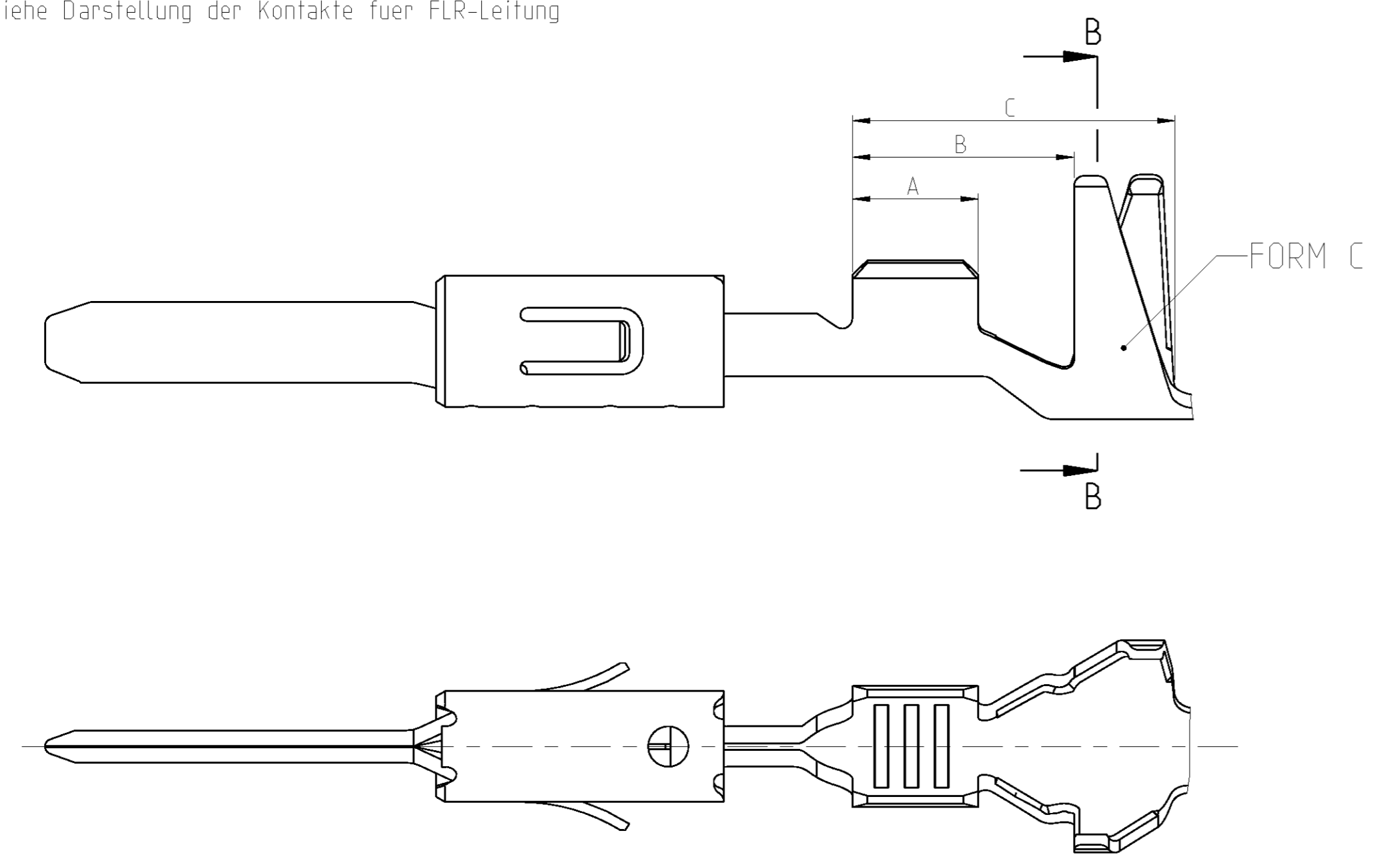


DESIGN 963898 / 963900 / 963904
 Ausfuehrung 963898 / 963900 / 963904

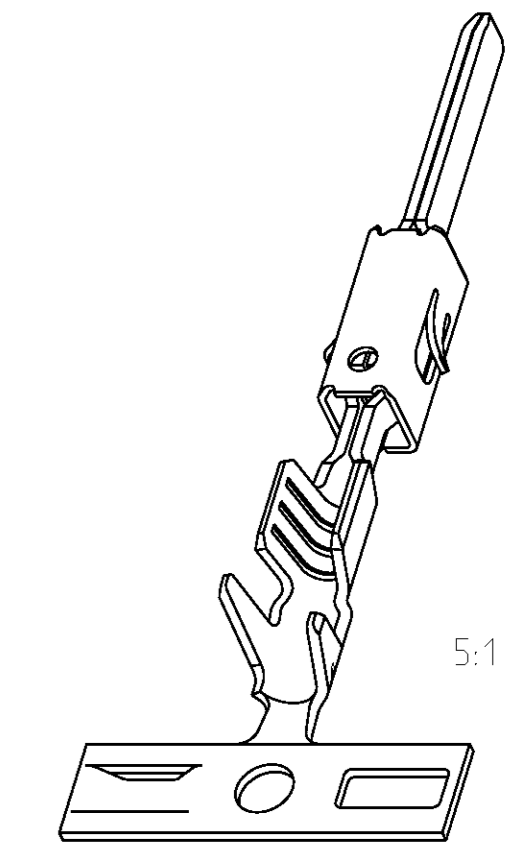
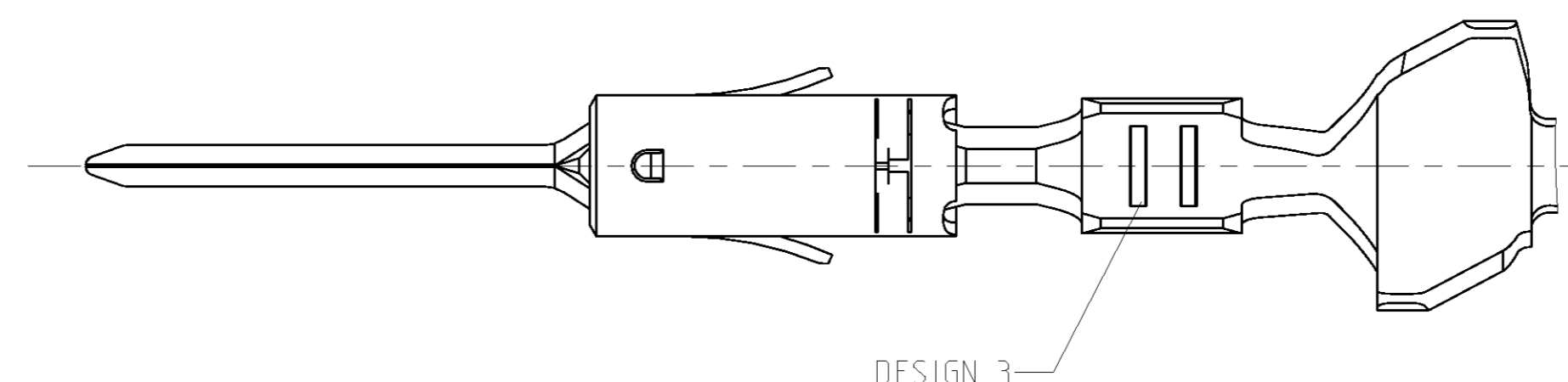
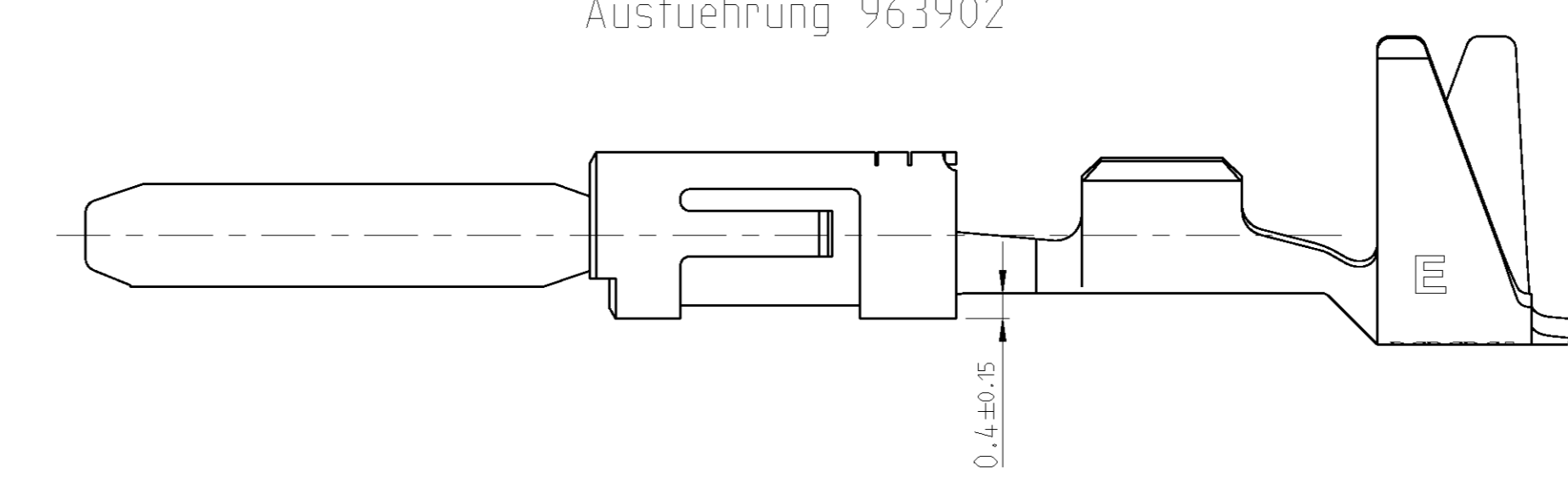


CONTACTS FOR SINGLE WIRE SEALING SYSTEM:
 FLR- AND FLK-CABLE
 Kontakte fuer Einzeldichtung-System:
 FLR- und FLK-Leitung

DIMENSIONS SEE FIGURE CONTACTS FOR FLR-CABLE
 Masse siehe Darstellung der Kontakte fuer FLR-Leitung



DESIGN 963902
 Ausfuehrung 963902



THIS DRAWING IS A CONTROLLED DOCUMENT.		OWN: T.Bensch 11JUN1997	TE Connectivity PRODUCT GROUP DRAWING TAB 1.6 x 0.6 TYPE A FlatStecker 1.6 x 0.6 Typ A
DIMENSIONS: mm		CHK: U.Muenk 11JUN1997	
TOLERANCES UNLESS OTHERWISE SPECIFIED:		APPV: M.Bleicher 02MAR2011	NOT THE LATEST REVISION A1 00779 ©=1355055
0-PLC ±0.2 1-PLC ±0.2 2-PLC ±0.2 3-PLC ±0.2 4-PLC ±0.2 ANGLES ±0.2		APPLICATION SPEC: 114-18082 WEIGHT: - CUSTOMER DRAWING	
MATERIAL: SEE TABLE siehe Tabelle		FINISH: SEE TABLE siehe Tabelle	SCALE: 10:1 SHEET: 1 OF 2 DRAWN: A12

