



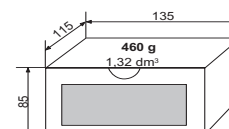
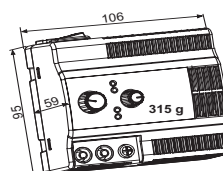
PROGRESS

- PRECISE** : Switching power supply offering a ripple <3mV rms.
- UNIVERSAL** : 12 settings in 2V steps with ±1V adjustment range.
- COMPLETE** : 12 or 24V lead-acid battery charger function.
- PRACTICAL** : ON/OFF switch, charger position and status indicators.
- PROTECTED** : against short circuits and reverse polarity.
- RESISTANT TO SHOCK** : Polycarbonate case.



60 WATTS

- 5V to 29V
- 2,5A to 24V
- 3,5A to 12V
- 4A to 5V
- and battery charger 12V or 24V



Specifications

Voltage

- Floating outputs on 4 mm safety sockets.
- Output voltage : ajustable from 5 to 29V by 12-position switch, and fine adjustment
 - switch positions : 6, 8, 10, 12, 14, 16, 18, 20, 22, 24, 26, 28 Volts
 - fine adjustment range : ± 1 Volt, whatever the switch setting
 - 12 and 24V lead-acid battery charger positions identified by two LED indicators
- Accuracy : ±1%
- Regulation : < 50mV at 5V 4A and < 10mV at 29V 2,1A for a load change from 0 to 100%.
 - < 1mV at 29V 2,1A and < 4mV at 5V 4A for a line change from 190V to 253V.
- Ripple : < 3mV rms including:
 - < 3mV peak to peak of the 100kHz signal
 - < 4mV peak to peak of the 100kHz signal
 - < 10mV peak to peak of switching transients
- Internal resistance : < 3mΩ.
- Hold-up time : 25 ms at half load and 12 ms at full load. (190V line input)
- Indicators :
 - Green LED indicator: "power supply operating"
 - Yellow LED indicator: "12V and 24V charger position"
 - Red LED indicator: "Status, output fuse broken"

Current

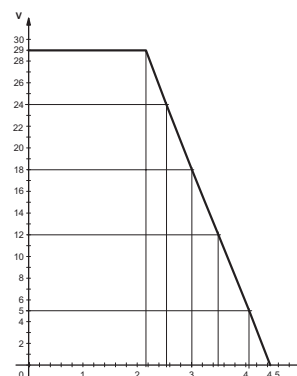
- Max I : 4,2A in short circuit condition
 - 4A to 5V
 - 3,5A to 12V
 - 2,5A to 24V
 - 2,1A to 29V

Charger of the batterie

- Rated capacity of the lead-acid batteries with electrolyte free: 35 Ah for 12 V and 20 Ah for 24 V.
 - Minimum capacity of the lead-acid batteries sealed: 10 Ah for 12 V and 7 Ah for the 24V.
- (In all the cases, to refer to the note of the batteries manufacturer)

Power

- A linear function of voltage from 60W to 20W (29 to 5 Volts).



Protection

- Short circuit protection, by current limit.
- Against overcurrent on main input, by fuse.
- Battery reverse polarity protection by output fuse.

Other specifications

- Safety : Classe II, double insulation, according to EN 61010-1 and EN 60335-2-29.
- EMC : Complies with EN 61326-1, performance criteria B, and EN 55011, ISM Group I, Class B.
- Protection level : IP 30.
- Input voltage : 190 to 253 Volts, 50 / 60 Hz.
- Mains input : double insulation 2 poles cable.
- Power consumption : 71 W max.
- ON/OFF control : toggle switch
- Dielectric strength : 3000 Vac between input and output.
- Presentation : Polycarbonate case.