


CAMBLOCK

5mm Pitch Low Profile Terminal Block

PCB
TERMINAL
BLOCKS

- 2-12 pole interlocking
- Moulded in black UL94V-0 PA (GF)
- Wire protector terminals
- Guided pin alignment
- 0.3-2 mm² (22-14 AWG)
-  US approved

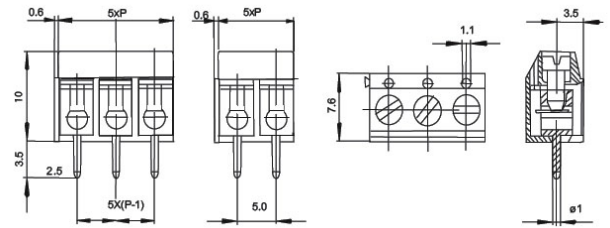
CTB5202




TYPE NO.	POLES	LENGTH
CTB5202/2	2	10mm
CTB5202/3	3	15mm
CTB5202/4	4	20mm
CTB5202/5	5	25mm
CTB5202/6	6	30mm
CTB5202/7	7	35mm
CTB5202/8	8	40mm
CTB5202/9	9	45mm
CTB5202/10	10	50mm
CTB5202/11	11	55mm
CTB5202/12	12	60mm

SPECIFICATION

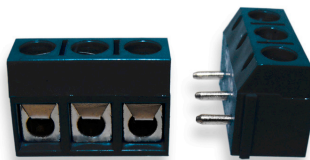
Rating	10A/300V
Insulation resistance	5000M Ω /1000V
Working temperature	-33°C to +120°C
Wire Protector	Stainless Steel
Cable Entry	0.3-2 mm ²
Wire clamp	Nickel plated brass
Withstand Voltage	AC2000V/1min
Recommended PCB hole size	ϕ 1.3mm



5mm Pitch Low Profile 90° Terminal Block

- 2-12 pole interlocking
- Moulded in black UL94V-0 PA (GF)
- Guided pin alignment
- Wire protector terminals
- 0.3-2 mm² (22-14 AWG)
-  US approved

CTB5252



TYPE NO.	POLES	LENGTH
CTB5252/2	2	10mm
CTB5252/3	3	15mm
CTB5252/4	4	20mm
CTB5252/5	5	25mm
CTB5252/6	6	30mm
CTB5252/7	7	35mm
CTB5252/8	8	40mm
CTB5252/9	9	45mm
CTB5252/10	10	50mm
CTB5252/11	11	55mm
CTB5252/12	12	60mm

SPECIFICATION

Rating	10A/300V
Insulation resistance	5000M Ω /1000V
Working temperature	-33°C to +120°C
Wire Protector	Stainless Steel
Cable Entry	0.3-2 mm ²
Wire clamp	Nickel plated brass
Withstand Voltage	AC2000V/1min
Recommended PCB hole size	ϕ 1.3mm

