

Flush-type connector - SACC-DSI-M 8MS-3CON-L180 SH - 1455997


Please be informed that the data shown in this PDF Document is generated from our Online Catalog. Please find the complete data in the user's documentation. Our General Terms of Use for Downloads are valid (<http://phoenixcontact.com/download>)



Sensor/actuator flush-type connector, connector, 3-pos. M8, rear/screw mounting with M8 fastening thread, with straight solder connection



Key commercial data

| | |
|--------------------------------------|---|
| Packing unit | 20 pc |
| Minimum order quantity | 20 pc |
| GTIN |  4 046356 605953 |
| Weight per Piece (excluding packing) | 5.83 g |
| Custom tariff number | 85366990 |
| Country of origin | Germany |
| Product key | ABQBAA |

Technical data

Ambient conditions

| | |
|---------------------------------|------------------|
| Ambient temperature (operation) | -25 °C ... 85 °C |
| Degree of protection | IP67 |

General

| | |
|------------------------|------------------------------|
| Rated current at 40°C | 4 A |
| Rated voltage | 60 V |
| Number of positions | 3 |
| Contact resistance | ≤ 3 mΩ |
| Insulation resistance | ≥ 100 MΩ |
| Coding | A - standard |
| Standards/regulations | M8 connector IEC 61076-2-104 |
| Signal type/category | Universal |
| Status display | No |
| Surge voltage category | II |
| Pollution degree | 3 |

Flush-type connector - SACC-DSI-M 8MS-3CON-L180 SH - 1455997

Technical data

General

| | |
|-------------------|------------------------------------|
| Connection method | Solder pins |
| Mounting type | Rear mounting M8 x 1 With flat nut |

Material

| | |
|---|------------------------------|
| Inflammability class according to UL 94 | HB |
| Contact material | Cu alloy |
| Contact surface material | Au |
| Contact carrier material | PA 66 |
| Material, knurls | Zinc die-cast, nickel-plated |
| Sealing material | NBR |

Cable

| | |
|---------------------------------|------------------|
| Ambient temperature (operation) | -25 °C ... 85 °C |
|---------------------------------|------------------|

Classifications

eCl@ss

| | |
|------------|----------|
| eCl@ss 4.0 | 27140815 |
| eCl@ss 4.1 | 27140815 |
| eCl@ss 5.0 | 27143423 |
| eCl@ss 5.1 | 27143423 |
| eCl@ss 6.0 | 27143423 |
| eCl@ss 7.0 | 27449001 |
| eCl@ss 8.0 | 27440103 |

ETIM

| | |
|----------|----------|
| ETIM 4.0 | EC002061 |
| ETIM 5.0 | EC002061 |

UNSPSC

| | |
|---------------|----------|
| UNSPSC 6.01 | 31251501 |
| UNSPSC 7.0901 | 31251501 |
| UNSPSC 11 | 31251501 |
| UNSPSC 12.01 | 31251501 |
| UNSPSC 13.2 | 31251501 |

Approvals

Approvals

Approvals

EAC

Flush-type connector - SACC-DSI-M 8MS-3CON-L180 SH - 1455997

Approvals

Ex Approvals

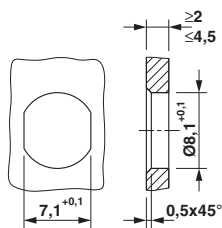
Approvals submitted

Approval details

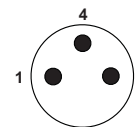
| |
|-----|
| EAC |
|-----|

Drawings

Dimensioned drawing



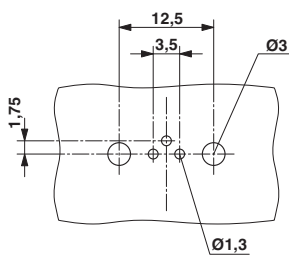
Schematic diagram



Pin assignment M8 plug, 3-pos., view male side

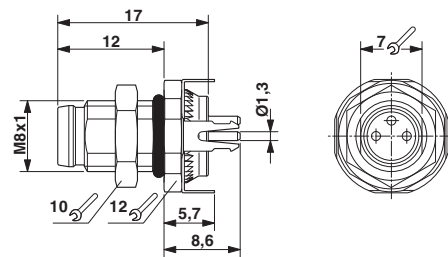
Mounting panel with feed-through hole

Drilling diagram



Drilling diagram

Dimensioned drawing



M8 flush-type plug