

# Flush-type connector - SACC-DSI-M5FS-3CON-L180 - 1530647


Please be informed that the data shown in this PDF Document is generated from our Online Catalog. Please find the complete data in the user's documentation. Our General Terms of Use for Downloads are valid (<http://phoenixcontact.com/download>)



Sensor/actuator flush-type socket, 3-pos., M5, prewall/screw mounting, with straight solder connection



## Key commercial data

Packing unit	20 pc
Minimum order quantity	20 pc
GTIN	 4 046356 024440
Weight per Piece (excluding packing)	4.23 g
Custom tariff number	85366990
Country of origin	Germany
Product key	ABQAAB
Note	Made to Order (non-returnable)

## Technical data

### Ambient conditions

Ambient temperature (operation)	-25 °C ... 80 °C
Degree of protection	IP67

### General

Rated current at 40°C	1 A
Rated voltage	60 V
Number of positions	3
Contact resistance	≤ 3 mΩ
Insulation resistance	≥ 100 MΩ
Coding	A - standard
Standards/regulations	M5 connector IEC 61076-2-105
Status display	No
Surge voltage category	II
Pollution degree	3

# Flush-type connector - SACC-DSI-M5FS-3CON-L180 - 1530647

## Technical data

### General

Test voltage	800 V
Connection method	Solder pins
Mounting type	Rear mounting M5 x 0.5 With locking nut

### Material

Inflammability class according to UL 94	HB
Contact material	CuSn
Contact surface material	Au
Contact carrier material	PA 66
Material, knurls	Nickel-plated brass
Sealing material	Viton

## Classifications

### eCl@ss

eCl@ss 4.0	27140815
eCl@ss 4.1	27140815
eCl@ss 5.0	27143423
eCl@ss 5.1	27143423
eCl@ss 6.0	27143423
eCl@ss 7.0	27449001
eCl@ss 8.0	27440103

### ETIM

ETIM 2.0	EC001297
ETIM 3.0	EC002061
ETIM 4.0	EC002062
ETIM 5.0	EC002061

### UNSPSC

UNSPSC 6.01	31251501
UNSPSC 7.0901	31251501
UNSPSC 11	31251501
UNSPSC 12.01	31251501
UNSPSC 13.2	31251501

## Approvals

### Approvals

---

Approvals

EAC

# Flush-type connector - SACC-DSI-M5FS-3CON-L180 - 1530647

## Approvals

Ex Approvals

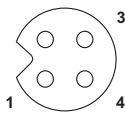
Approvals submitted

## Approval details

EAC

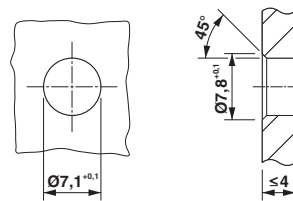
## Drawings

Schematic diagram

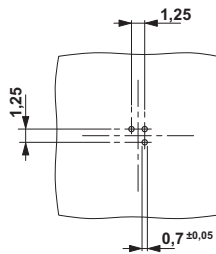


Pin assignment M5 socket, 3-pos., D-coded, view female side

Dimensioned drawing

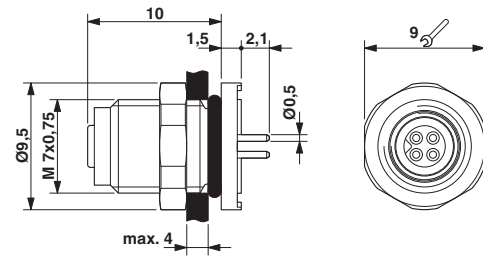


Drilling diagram



M5 flush-type socket

Dimensioned drawing



M5 flush-type socket