

THRU-HOLE (THM) & SURFACE MOUNT (SMT) COIN CELL HOLDERS

20mm COIN CELL HOLDERS

DESIGN ADVANTAGES...

- Reliable spring tension assures low contact resistance
- Retains battery securely to withstand shock and vibration
- All conductive polystyrene carrier tape meets ANSI/EIA - 481 standard

- Base material UL Rated 94V-0. Impervious to most industrial solvents
- Operating temperature range: -60°F to +293°F (-50°C to +145°C)

IDEALLY SUITED FOR...

- Computer memory, power transfer and back-up systems
- Video and telecommunications power back-up
- Microprocessors and Microcomputer memory hold (desktop and laptop applications)

- Industrial and commercial security and alarm systems
- Communications power sources
- PC/104 applications

20mm CELLS



- Polarity clearly marked (+)
- Compatible with vacuum and mechanical pick & place assembly systems
- Low profile for high density packaging
- Rugged construction, light weight
- SMT solder tail with "Flow-Hole" design for increased joint strength
- Viewable solder tails assures reliable joint inspection
- Safe for all soldering & reflow operations

MATERIAL:

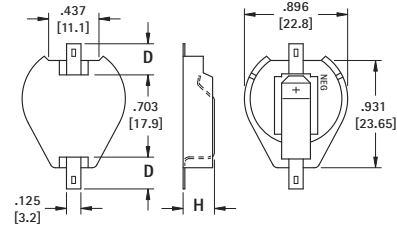
Contacts: .015 (.38) Spring Steel

Base: High Temperature, Nylon 46, UL Rated 94V-0

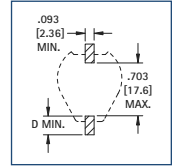
Tin-Nickel Plate		Gold Plate (Flash)		D PAD SIZE	H HEIGHT	CELLS	BATTERY REFERENCE
CAT. NO. BULK	ON TAPE & REEL	CAT. NO. BULK	ON TAPE & REEL				
1061	1061TR	1081	1081TR	.156 (4.0)	.290 (7.4)	(1) Cell (any 20mm)	CR2012, CL2016, BR2020, DL2032 CR2032
1063	1063TR	1093	1093TR	.278 (7.1)		(2) 2012, (2) 2016	
1062	1062TR	1082	1082TR	.156 (4.0)	.391 (9.9)	(2) 2020, (2) 2025, (2) 2032	
1064	1064TR	1094	1094TR	.278 (7.1)		(3) 2012, (3) 2016	

Tape & Reel Spec's: 44mm wide; 32mm pitch; 13 inch reel (200 pieces per reel)

AVAILABLE ON TAPE AND REEL



Pad Layout



Surface Mount

- Polarized Holder
- Low Profile for high density packaged PCB's

MATERIAL:

Contacts: .006 (.15) Phosphor Bronze, Gold Plate (Flash)

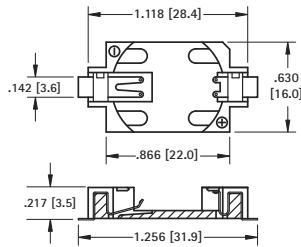
Base: Glass Filled LCP, UL Rated 94V-0

CAT. NO. BULK	ON TAPE & REEL	BATTERY REFERENCE
1060	1060TR	CR2025, DL2032

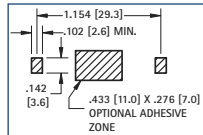
Tape & Reel Spec's: 44mm wide; 24mm pitch; 13 inch reel (500 pieces per reel)

AVAILABLE ON TAPE AND REEL

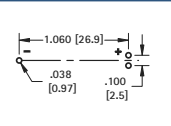
2025 / 2032 CELL



Pad Layout



Mounting Detail

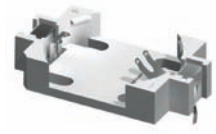


- Compatible with vacuum and mechanical pick & place assembly systems
- Low height
- Vertical entry

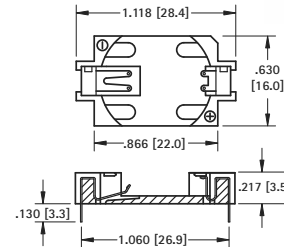
MATERIAL:

Contacts: .006 (.15) Phosphor Bronze, Tin Plate

Base: Glass Filled LCP, UL Rated 94V-0



Thru Hole Mount



CAT. NO.	BATTERY REFERENCE
1059	CR2025, DL2032

INSULATED RETAINERS

AVAILABLE ON TAPE AND REEL

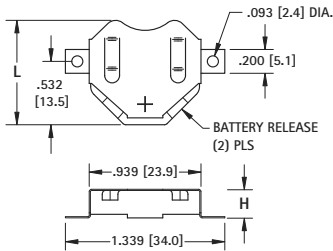
20mm CELLS

- Ideal for 6 volt or 3 volt applications
- Two coin cell batteries can be installed in series
- Plastic insulator prevents shorting of battery, within the holder, when installed improperly
- Low profile
- Battery release ports for easy battery replacement
- Refer to pages 6 & 7 for a complete offering of coin cell retainers

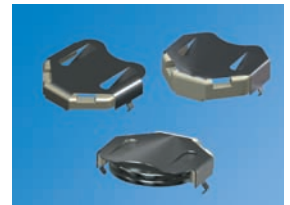
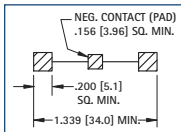
MATERIAL: Contacts: .010 (.25) Phosphor Bronze **Insulator:** High Temperature, Nylon 46, UL Rated 94V-0



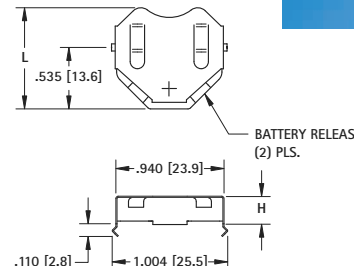
Surface Mount



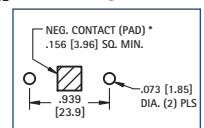
Pad Layout



Thru Hole Mount



Mounting Detail



Surface Mount						BATTERY REFERENCE				Thru Hole Mount	
Tin-Nickel Plate			Matte Tin Plate			6 VOLT (2) CELLS		3 VOLT (1) CELL		Tin-Nickel Plate	
CAT. NO. LOOSE*	CAT. NO. BULK	ON TAPE & REEL	CAT. NO. LOOSE*	CAT. NO. BULK	ON TAPE & REEL	L	H	L	H	CAT. NO. LOOSE*	CAT. NO. BULK
3020-2	3020	3020TR	3070-2	3070	3070TR	.890 (22.6)	.156 (4.0)	2012, 2016	2020, 2025	.890 (22.6)	.156 (4.0)
3022-2	3022	3022TR	3072-2	3072	3072TR	.877 (22.3)	.240 (6.1)	2020, 2025	2032	.877 (22.3)	.240 (6.1)
3024-2	3024	3024TR	3074-2	3074	3074TR	.877 (22.3)	.295 (7.5)	2032	Not Applicable	.877 (22.3)	.295 (7.5)

* Supplied Unassembled

Tape & Reel Spec's: 56mm wide; 28mm pitch; 13 inch reel: 3020TR, 3070TR 400 pieces per reel; 3022TR, 3072TR 250 pieces per reel; 3024TR, 3074TR 250 pieces per reel