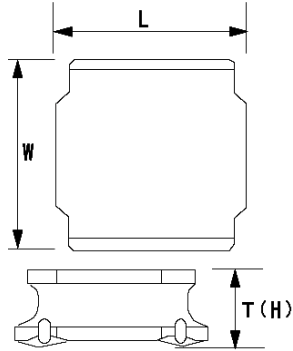


SMD Power Inductors (NR series S type)

NRS5020T220MMGJ



■ Features

- Item Summary
22 μ H($\pm 20\%$), 900mA, 1000mA
- Lifecycle Stage
Mass Production
- Standard packaging quantity (minimum)
Taping 800pcs

■ Products characteristics table

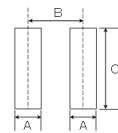
| | |
|---|--------------------------|
| CaseSize (EIA/JIS) | -/5020 |
| Inductance | 22 μ H($\pm 20\%$) |
| Inductance Measuring Frequency | 100kHz |
| Rated Current -Saturation Current | 900mA |
| Rated Current -Temperature Rise Current | 1000mA |
| DC Resistance (max) | 0.312 Ω |
| Avg. of DC.Resistance | 0.26 Ω |
| Temperature Range | -25°C to 125°C |
| Self-resonant Frequency (min) | 17MHz |
| RoHS Compliance | Yes |
| Halogen Free | Yes |
| Soldering Method | Reflow |

■ External Dimensions

| | |
|---|-----------------|
| L | 4.9mm ± 0.2 |
| W | 4.9mm ± 0.2 |
| H | 2mm max |

■ Recommended Land Patterns

【推奨ランドパターン】
 実装上の注意
 ・実装状態を確認の上で使用ください。また、ご購入の際は、本製品のほんだ付けはフラットはんだ工法にお願いします。
 【Recommended Land Patterns】
 Surface Mounting
 ・Mounting and soldering conditions should be checked beforehand
 ・Applicable soldering process to these products is reflow soldering only.



SMD Power Inductors (NR series/NR series H type/S type /V type)

| Type | A | B | C |
|-----------------|-----|-----|---|
| NRS010 | | | |
| NRS012 | | | |
| NRS014 | | | |
| NRS020 | 1.5 | 3.6 | 4 |
| NRS024 | | | |
| NRS030 | | | |
| NR 5040, NRS040 | | | |

unit:mm

The data is reference only. Electrical characteristics vary depending on environment or measurement condition.
 TAIYO YUDEN reserves the right to make change to the Date at any time without notice.
 Before making final selection, please check product specification.

2013.08.20