

## Specifications

### Output

socket:	Standard USB, type A, female	
voltage:	5 V DC $\pm 5\%$	
max. current:	1.5 A	continuous
auto cut off:	$\leq 30$ mA	(if the output current is lower than 30mA, the output will be switched off automatically)
safety functions:	protection against external short circuit, overload and deep discharge	

### Input

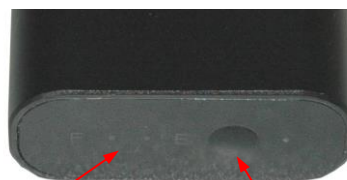
socket:	Micro USB, female	
voltage:	5 V DC $\pm 5\%$	
charge current:	1000 mA	$\pm 10\%$
charge time:	3...3.5 h	

### Indicators

charge/battery status:	5 LEDs (blue)	show the charge state of the internal battery in 20% steps - while charge is in progress - when pressing the charge state test button
charge end:		all 5 LEDs light permanently when the internal battery is fully charged

### Internal Battery

cell type:	LiCoO <sub>2</sub>	Lithium Polymer
size:	customized	(prismatic cells)
number of cells:	2	
configuration:	1S2P	
nominal voltage:	3.7 V	
capacity:	2600 mAh (2 x 1300mAh)	
energy:	9.6 Wh	
life time expectance: (C>60% of min. capacity)	$\geq 500$ cycles	



battery status indicator LEDs      test button

### Temperature range

operating temperature:	- 10...50 °C
storage temperature:	- 10...30 °C (recommended)

### Mechanical specifications

length L1:	59 $\pm 2$ mm
width W1:	50 $\pm 1$ mm
height H1:	22 $\pm 1$ mm
weight (device only):	105 $\pm 10$ g



### Housing

material:	aluminum, anodized
colour:	black

### Accessories:

micro USB to USB cable



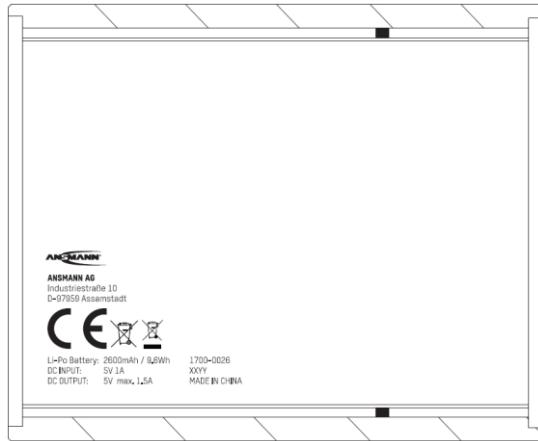
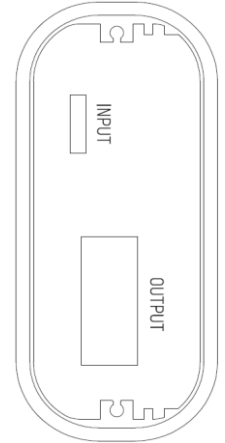
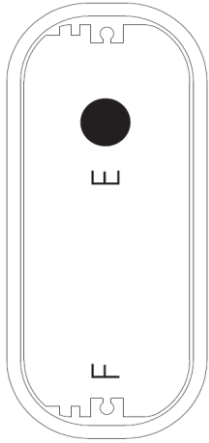
cable length: 550mm  
colour: black




#### ANSMANN Specifications for model:

	<b>ANSMANN Powerbank Model 2.6 (2600mAh)</b>
data sheet no. / part no.	1700-0026
supplier no.	703572
author / date	TG / 18.06.2014

**Printing:**



	<b>ANSMANN Specifications for model:</b>	<b>ANSMANN Powerbank Model 2.6 (2600mAh)</b>
	data sheet no. / part no.	1700-0026
	supplier no.	703572
	author / date	TG / 18.06.2014

Manufacturer reserves the right to alter or amend the design, model and specification without prior notice