

Specifications

Output

socket:	Standard USB, type A, female	
voltage:	5 V DC $\pm 5\%$	
max. current:	1.5 A	continuous
auto cut off:	≤ 30 mA	(if the output current is lower than 30mA, the output will be switched off automatically)
safety functions:	protection against external short circuit, overload and deep discharge	

Input

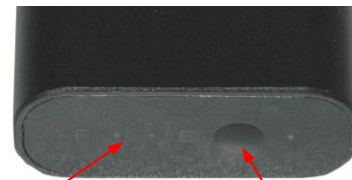
socket:	Micro USB, female	
voltage:	5 V DC $\pm 5\%$	
charge current:	1000 mA	$\pm 10\%$
charge time:	6...7 h	

Indicators

charge/battery status:	5 LEDs (blue)	show the charge state of the internal battery in 20% steps - while charge is in progress - when pressing the charge state test button
charge end:		all 5 LEDs light permanently when the internal battery is fully charged

Internal Battery

cell type:	LiCoO ₂	Lithium Polymer
size:	customized	prismatic cells
number of cells:	2	
configuration:	1S2P	
nominal voltage:	3.7 V	
capacity:	5200 mAh (2 x 2600mAh)	
energy:	19.3 Wh	
life time expectance: (C>60% of min. capacity)	≥ 500 cycles	



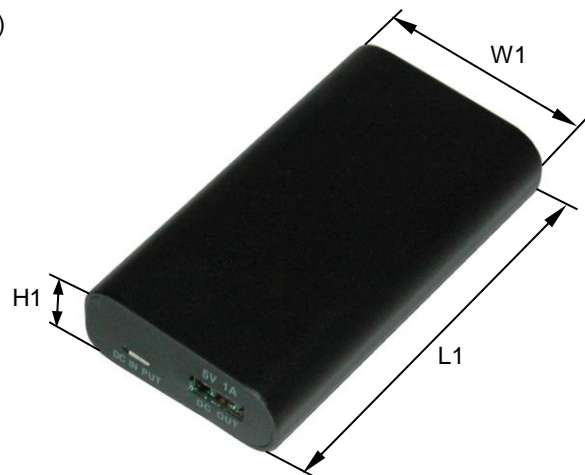
battery status indicator LEDs test button

Temperature range

operating temperature:	- 10...50 °C
storage temperature:	- 10...30 °C (recommended)

Mechanical specifications

length L1:	90 ± 2 mm
width W1:	50 ± 1 mm
height H1:	22 ± 1 mm
weight (device only):	160 ± 10 g



Housing

material:	aluminum, anodized
colour:	black

Accessories:

micro USB to USB cable



cable length: 550mm
colour: black



ANSMANN Specifications for model:

data sheet no. / part no.

supplier no.

author / date

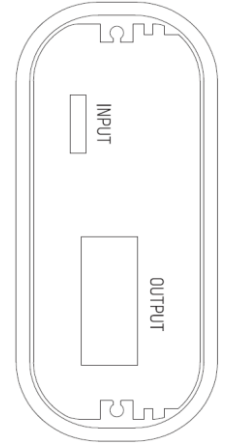
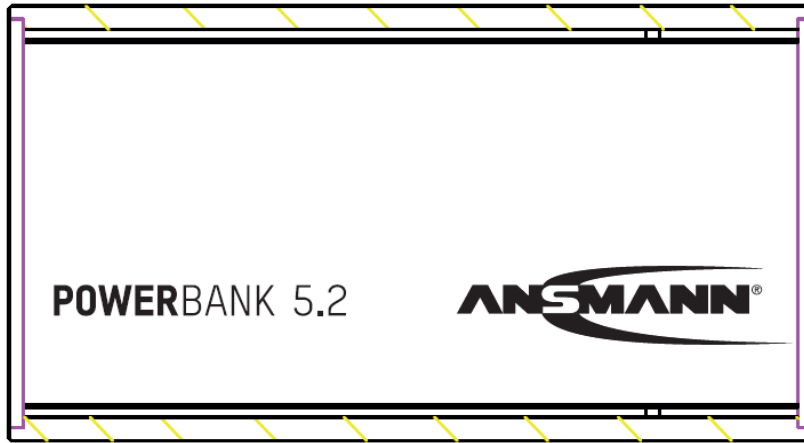
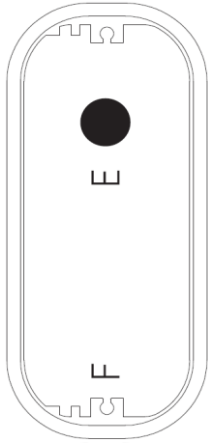
ANSMANN Powerbank Model 5.2 (5200mAh)





1700-0027

703572

TG / 18.06.2014

Printing:




ANSMANN AG
 Industriestraße 10
 D-67359 Asslarstadt




 Li-Po Battery: 5200mAh / 19,3Wh 1700-0027
 DC INPUT: 5V 1A XXXY
 DC OUTPUT: 5V max. 1.5A MADE IN CHINA



ANSMANN Specifications for model:

**ANSMANN Powerbank
Model 5.2 (5200mAh)**

data sheet no. / part no.

1700-0027

supplier no.

703572

author / date

TG / 18.06.2014