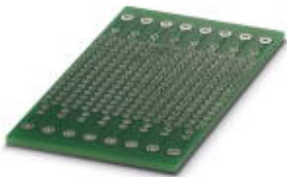


PCB - EH 45F/16 DEV-PCB - 2202552

Please be informed that the data shown in this PDF Document is generated from our Online Catalog. Please find the complete data in the user's documentation. Our General Terms of Use for Downloads are valid (<http://phoenixcontact.com/download>)



Product Features

- Hole matrix PCB for self-assembly
- Assembly area approx. 1,600 mm²
- Hole matrix dimension: 2.54 mm
-

Key commercial data

Packing unit	1
GTIN	 4 055626 142678
Custom tariff number	85340011

Classifications

eCl@ss

eCl@ss 5.1	27379201
------------	----------

ETIM

ETIM 4.0	EC002498
ETIM 5.0	EC002498

Accessories

Additional products

Electronic housing - EH 45 FLAT DEV-KIT KMGY - 2202529

DEV-KIT EH 45 FLAT: contains 1 x EH 45 FLAT housing and PCB terminal blocks (MKDS ... 5,08), supplied in individual parts

