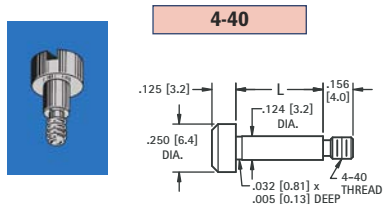


# PRECISION GROUND SHOULDER SCREWS

Shoulder ground to  $+.000/-0.01$  Dia,  $+.002 /-.000$  Length. **Material:** Stainless Steel, ASTM A581/A582

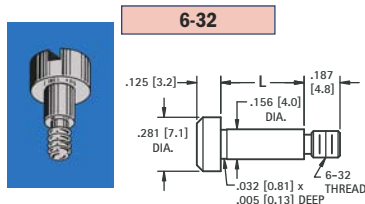


SLOTTED



SOCKET

CAT. NO.	LENGTH	CAT. NO.
2421	.125 (3.2)	2441
2422	.250 (6.4)	2442
2423	.375 (9.5)	2443
2424	.500 (12.7)	2444

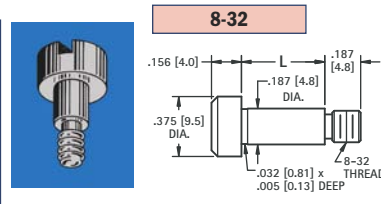


SLOTTED



SOCKET

CAT. NO.	LENGTH	CAT. NO.
2425	.125 (3.2)	2445
2426	.250 (6.4)	2446
2427	.375 (9.5)	2447
2428	.500 (12.7)	2448



SLOTTED

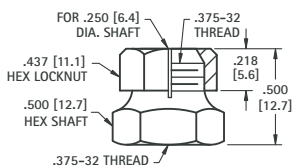
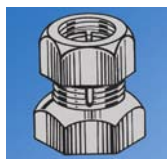


SOCKET

CAT. NO.	LENGTH	CAT. NO.
2431	.125 (3.2)	2451
2432	.250 (6.4)	2452
2433	.375 (9.5)	2453
2434	.500 (12.7)	2454
2435	.625 (15.9)	2455

## SHAFT LOCKS

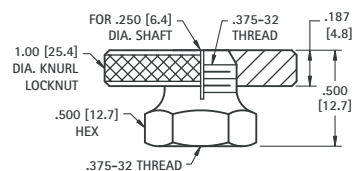
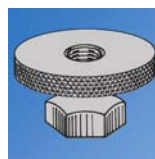
For .250 (6.4) SHAFT



**MATERIAL:** Brass, Nickel Plate

**CAT. NO. 1701**

For .250 (6.4) SHAFT



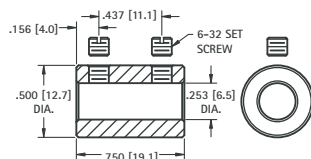
**MATERIAL:** Brass, Nickel Plate

**CAT. NO. 1702**

## .250 (6.4) SHAFT COUPLING



- Two set screws hold shaft securely

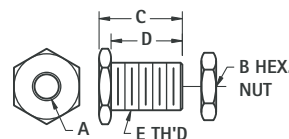


**MATERIAL:** Brass, Nickel Plate  
Set Screws: Steel, Zinc Plate  
Supplied unassembled

**CAT. NO. 1453**

## PANEL BEARINGS

STANDARD and MINIATURE



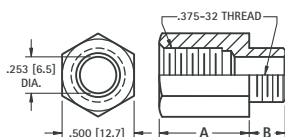
**MATERIAL:** Brass, Nickel Plate  
Supplied unassembled

CAT. NO.	A	B (HEX)	C	D	E THREAD
1705	.253 (6.5)	.437 (11.1)	.500 (12.7)	.437 (11.1)	.375-32 Standard
1706	.128 (3.3)	.343 (8.7)	.437 (11.1)	.375 (9.5)	.250-32 Miniature

## VOLUME CONTROL EXTENDERS



For .250 (6.4) volume control shafts having .375-32 threaded bushings.



CAT. NO.	A	B
1464	.625 (15.9)	.250 (6.4)
1465	.625 (15.9)	.375 (9.5)
1466	.687 (17.4)	.500 (12.7)
1467	.750 (19.1)	.250 (6.4)

**MATERIAL:** Brass, Nickel Plate

## PANEL NUTS



For Volume Controls, Switches, Tip Jacks, etc.

CAT. NO.	FOR	THREAD	DIAMETER	THICKNESS
1448	Mounting	1/4-32	.375 Hex	.093 (2.38)
1449	Mini. Control	1/4-32	.312 Hex	.078 (1.98)
1456	Vol. Control	3/8-32	.500 Hex	.093 (2.38)
1458	Switch	15/32-32	.562 Hex	.078 (1.98)
1459	Switch Ring	15/32-32	.625 Knurled	.062 (1.57)
1472	Filter	15/16-32	.375 Hex	.093 (2.38)

**MATERIAL:** Brass, Nickel Plate