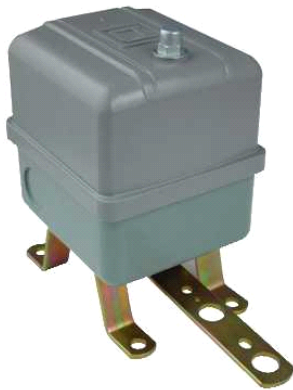


## 9036GG2

float switch - open tank - NEMA 1 - pedestal  
mounted - 2 NC DPST-DB contacts



### Main

Range of product	Square D Pumptrol
Product or component type	Float switch
Device application	Open tank heavy duty
Device short name	9036G
Product specific application	Liquid level control
Electrical circuit type	Power circuit
Quantity per set	Set of 1
Type of packing	Individual

### Complementary

Product destination	For open tank or sump
Device mounting	Pedestal
Cable entry number	3 knock-outs for 1/2" conduit UL 508
Contacts type and composition	2 NC snap action DPST-DB Form YY
Controlled fluid	Fresh water @ specific gravity of 0.85 in or higher Sea water @ specific gravity of 0.85 in or higher Hydraulic oil @ specific gravity of 0.85 in or higher Corrosive fluid @ specific gravity of 0.85 in or higher
Motor power kW	1.5 kW 2 hp @ 115 V AC 1 phase 2.2 kW 3 hp @ 115 V AC 3 phases 2.2 kW 3 hp @ 230 V AC 1 phase 3.7 kW 5 hp @ 230 V AC 3 phases 0.75 kW 1 hp @ 460 V AC 3 phases 0.75 kW 1 hp @ 475 V AC 3 phases 0.18 kW 0.25 hp @ 32 V DC 0.37 kW 0.5 hp @ 115 V DC 0.37 kW 0.5 hp @ 230 V DC 3.7 kW 5 hp @ 460 V AC 1 phase 3.7 kW 5 hp @ 475 V AC 1 phase
Electrical connection	Screw-clamp terminals 10 AWG
Contact operation	Contacts close on liquid rise
Float movement	Variable adjustable
Float position	Any
Float rod angle	Vertical
Force down to trip	27 ozf long lever 39 ozf short lever
Force up to trip	21 ozf long lever 33 ozf short lever
Short circuit protection	20 A cartridge fuse gG
Local signalling	Without
Enclosure material	Noryl thermoplastic resin or equivalent
Operating position	Vertical position only
Electrical durability	100 cycles @ 60 cyc/mn
Mechanical durability	300 cycles
Terminal block type	4 terminals
Operating rate	60 cyc/mn
[Uij] rated insulation voltage	575 V UL 508
Product weight	2.17 lb(US)
Terminals description ISO n°1	Line-load-load-line
Factory modification	Without

The information provided in this documentation contains general descriptions and/or technical characteristics of the performance of the products contained herein. This documentation is not intended as a substitute for and is not to be used for determining suitability or reliability of these products for specific user applications. It is the duty of any such user or integrator to perform the appropriate and complete risk analysis, evaluation and testing of the products with respect to the relevant specific application or use thereof. Neither Schneider Electric Industries SAS nor any of its affiliates or subsidiaries shall be responsible or liable for misuse of the information contained herein.

Kit composition	Float switch Rod and float are to be chosen in accessories
-----------------	---

## Environment

Standards	CE UL 508
Ambient air temperature for operation	-22...220 °F
Ambient air temperature for storage	-22...220 °F
NEMA degree of protection	NEMA 1 UL 50
Product certifications	UL listed file E12158 CSA file LR25490

## Offer Sustainability

Sustainable offer status	Green Premium product
RoHS	Compliant - since 1150 - Schneider Electric declaration of conformity
REACH	Reference not containing SVHC above the threshold
Product environmental profile	Available
Product end of life instructions	Available