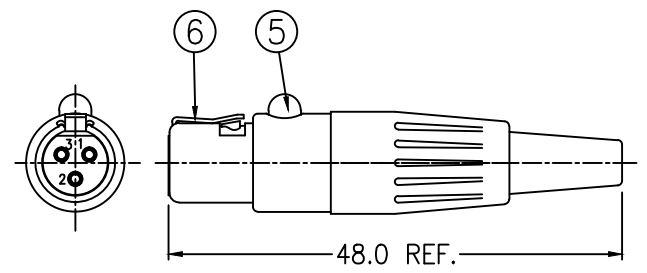
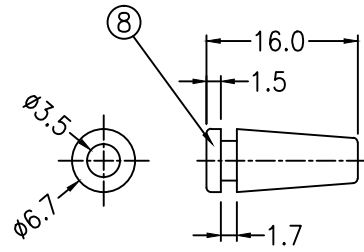
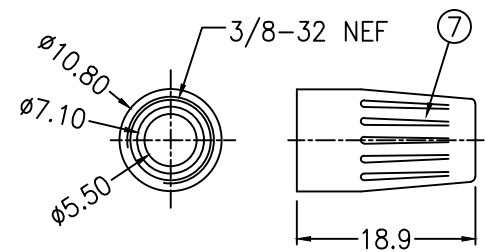
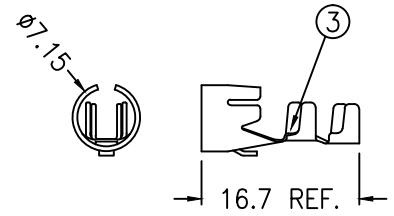
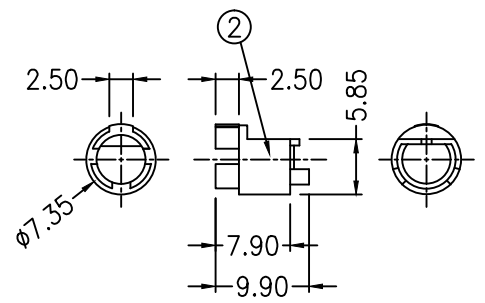
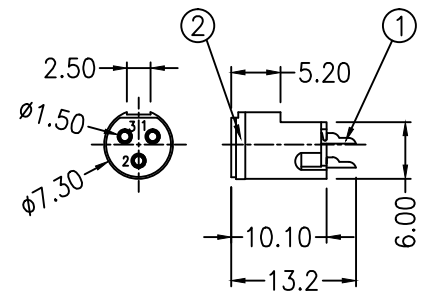
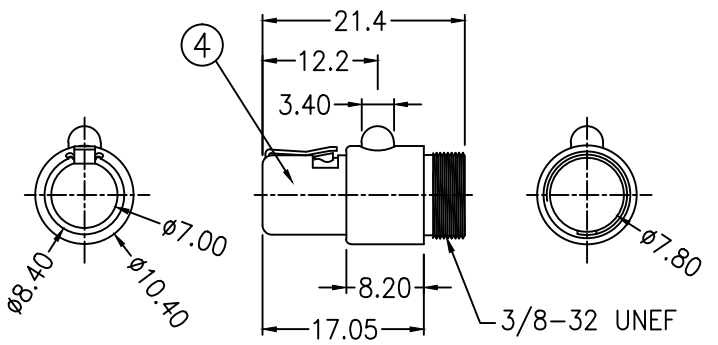


THIS DRAWING AND SPECIFICATIONS, HEREIN ARE THE CONFIDENTIAL PROPERTY OF SAMAR AND SHALL NOT BE REPRODUCED OR COPIED OR DISCLOSED IN WHOLE OR IN PART WITHOUT WRITTEN PERMISSION.



RoHS

ASSEMBLY

NO.	PART NAME	DESCRIPTION	QTY	REMARK
8	CABLE RELIEF	PVC, BLACK	1	
7	PLASTIC HANDLE	ABS, BLACK	1	
6	SPRING LATCH	STAINLESS K5 , NICKEL-PLATED	1	
5	LATCH RELEASE BUTTON	ABS, BLACK	1	
4	METAL HOUSING	BRAS, NICKEL-PLATED	1	
3	CLAMP TERMINAL	BRONZE, TIN-PLATED	1	
2	INSULATOR	DELIN, BLACK	1	
1	CONTACT PIN	PHOSPHOR BRONZE, GOLD-PLATED	1	

DIMENSIONS ARE IN mm [INCH]		TOLERANCES ARE FRACTIONS DECIMALS ANGLES		MATERIAL		P/N AV17523		DRAWN LIN		DATE 06/10/2008	
MOLD NO.		.x ±0.2 [0.008]		FINISH		PROJECT NO.					
AV17523		.xx ±0.12 [0.005]		COLOR		SCALE 1.25:1		SIZE A4		SHEET 1 OF 1	
MINI XLR MICROPHONE CONNECTOR, 3P TYPE						MS062					