

# SES trunking GF-A6/4 grey with slots and base punching

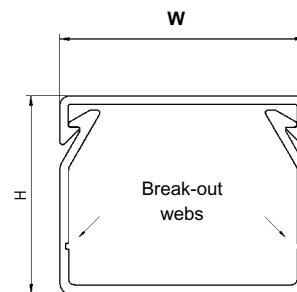
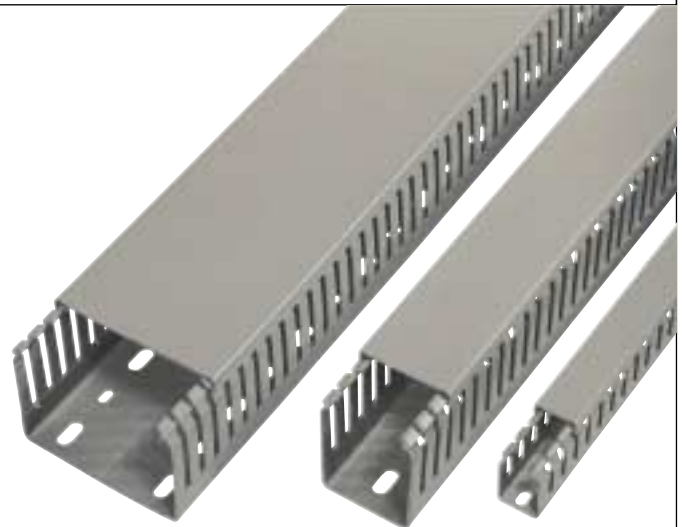


**GF-A6/4**  
**Colour grey**

<b>Slots and webs :</b>	slots 4 mm - webs 6 mm
<b>Standard length :</b>	2 metres (other lengths upon request)
<b>Minimum delivery :</b>	1 packing unit (base and lids are packed together)
<b>Colour :</b>	grey (GY 013) (RAL 7030)
<b>Material :</b>	PVC (Grade 9051)
<b>Other technical properties :</b>	see page D100
<b>Dimensions :</b>	see following page

## GF-A6/4 trunking

type	article number	pack	outside dimensions		
			H	W	h1
<b>Height 23 mm</b>					
GF-A6/4 23x30	0845 0010 013	48 m	23	30	5
GF-A6/4 23x43	0845 0020 013	24 m	23	43	5
<b>Height 25 mm</b>					
GF-A6/4 25x20	0845 0030 013	48 m	25	20	5
<b>Height 35 mm</b>					
GF-A6/4 35x20	0845 0040 013	48 m	35	20	8
GF-A6/4 35x30	0845 0050 013	48 m	35	30	8
GF-A6/4 35x43	0845 0060 013	24 m	35	43	8
<b>Height 42 mm</b>					
GF-A6/4 42x20	0845 0070 013	48 m	42	20	10
GF-A6/4 42x30	0845 0080 013	48 m	42	30	7
GF-A6/4 42x43	0845 0090 013	24 m	42	43	7
GF-A6/4 42x60	0845 0100 013	24 m	42	60	7
GF-A6/4 42x80	0845 0110 013	24 m	42	80	7
GF-A6/4 42x120	0845 0120 013	12 m	42	120	7
<b>Height 50 mm</b>					
GF-A6/4 50x30	0845 0130 013	48 m	48,5	30	8
GF-A6/4 50x43	0845 0140 013	24 m	48,5	43	8
GF-A6/4 50x60	0845 0150 013	24 m	48,5	60	8
<b>Height 60 mm</b>					
GF-A6/4 60x20	0845 0160 013	48 m	60	20	15
GF-A6/4 60x30	0845 0170 013	48 m	60	30	9
GF-A6/4 60x43	0845 0180 013	24 m	60	43	9
GF-A6/4 60x60	0845 0190 013	24 m	60	60	9
GF-A6/4 60x80	0845 0200 013	24 m	60	80	15
GF-A6/4 60x100	0845 0204 013	24 m	60	100	15
GF-A6/4 60x120	0845 0210 013	12 m	60	120	15
<b>Height 80 mm</b>					
GF-A6/4 80x30	0845 0220 013	24 m	80	30	15
GF-A6/4 80x43	0845 0230 013	24 m	80	43	15
GF-A6/4 80x60	0845 0240 013	24 m	80	60	15
GF-A6/4 80x80	0845 0250 013	24 m	80	80	15
GF-A6/4 80x100	0845 0254 013	12 m	80	98	15
GF-A6/4 80x120	0845 0260 013	12 m	80	120	15
<b>Height 100 mm</b>					
GF-A6/4 100x30	0845 0280 013	24 m	100	30	20
GF-A6/4 100x60	0845 0290 013	24 m	100	60	20
GF-A6/4 100x80	0845 0300 013	12 m	100	80	20
GF-A6/4 100x100	0845 0270 013	12 m	100	100	20
GF-A6/4 100x150	0845 0271 013	12 m	100	150	20



GF-A6/4 trunkings are delivered in standard dimensions without double-sided tape at the base.

Trunkings fitted with double-sided adhesive tape are separately priced.

For GF-A6/4 trunkings, widths 20 to 60 mm :  
**Art. number** : 0845 0903 000

For GF-A6/4 trunkings, widths 80 to 150 mm :  
**Art. number** : 0845 0904 000

The adhesive tape allows temporary fastening before final attachment.

Double-sided adhesive tape can be delivered in rolls of different widths. See page C3/1-4-02

## GF-DIN-A6/4 trunking

<b>Height 100 mm</b>					
GF-DIN-A6/4 100x50	0845 0286 013	24 m	100	48	20
GF-DIN-A6/4 100x75	0845 0296 013	12 m	100	73	20

For slots, see page C1/1-02

**Lids for GF trunkings GREY**  
**(GF cable trunkings are always delivered with lids)**  
**Delivery of lids only by request.**



**Lids for GF trunkings**

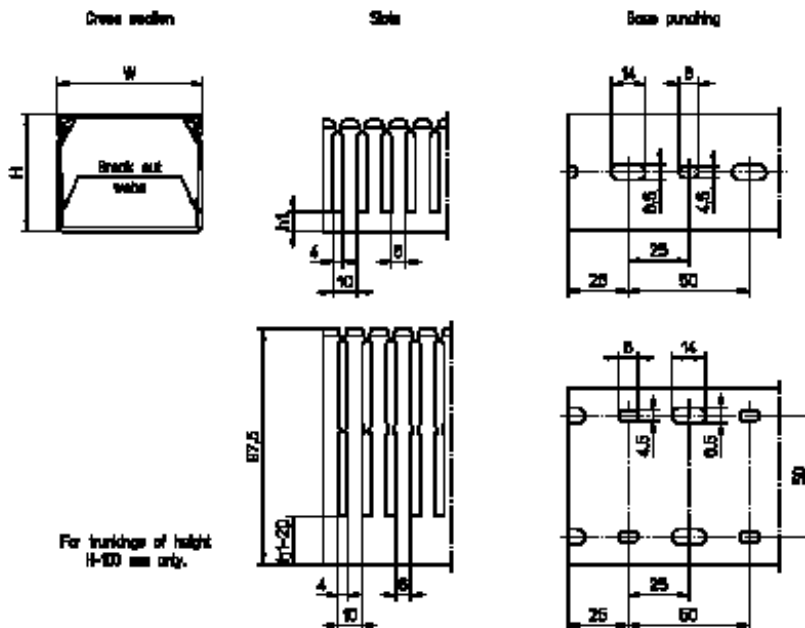
type	article number	pack	for trunkings		
<b>Width 20 mm</b>			<b>GF-A6/4 25x20</b>	<b>GF-A6/4 35x20</b>	
<b>Lid GF 20</b>	0845 0605 013	48 m	<b>GF-A6/4 42x20</b>	<b>GF-A6/4 60x20</b>	
<b>Width 30 mm</b>			<b>GF-A6/4 23x30</b>	<b>GF-A6/4 35x30</b>	<b>GF-A6/4 42x30</b>
<b>Lid GF 30</b>	0845 0610 013	24 m	<b>GF-A6/4 50x30</b>	<b>GF-A6/4 60x30</b>	<b>GF-A6/4 80x30</b>
			<b>GF-A6/4 100x30</b>		
<b>Width 43 mm</b>			<b>GF-A6/4 23x43</b>	<b>GF-A6/4 35x43</b>	<b>GF-A6/4 42x43</b>
<b>Lid GF 43</b>	0845 0615 013	24 m	<b>GF-A6/4 50x43</b>	<b>GF-A6/4 60x43</b>	<b>GF-A6/4 80x43</b>
<b>Width 60 mm</b>			<b>GF-A6/4 42x60</b>	<b>GF-A6/4 50x60</b>	<b>GF-A6/4 60x60</b>
<b>Lid GF 60</b>	0845 0620 013	24 m	<b>GF-A6/4 80x60</b>	<b>GF-A6/4 100x60</b>	
<b>Width 80 mm</b>			<b>GF-A6/4 42x80</b>	<b>GF-A6/4 60x80</b>	
<b>Lid GF 80</b>	0845 0625 013	24 m	<b>GF-A6/4 80x80</b>	<b>GF-A6/4 100x80</b>	
<b>Width 100</b>			<b>GF-A6/4 60x100</b>	<b>GF-A6/4 80x100</b>	
<b>Lid GF 100</b>	0845 0630 013	12 m	<b>GF-A6/4 100x100</b>		
<b>Width 120</b>			<b>GF-A6/4 42x120</b>	<b>GF-A6/4 60x120</b>	
<b>Lid GF120</b>	0845 0635 013	12 m	<b>GF-A6/4 80x120</b>		
<b>Width 150 mm</b>			<b>GF-A6/4 100x150</b>		
<b>Lid GF 150</b>	0845 0636 013	12 m			

**Lids for GF-DIN trunking**

<b>Width 50 mm</b>			<b>GF-DIN-A6/4 100x50</b>
<b>Lid GF-DIN 50</b>	0845 0650 013	24 m	
<b>Width 75 mm</b>			<b>GF-DIN-A6/4 100x75</b>
<b>Lid GF-DIN 75</b>	0845 0655 013	24 m	

**SES TRUNKING GF-A6/4**

**Technical illustrations : cross-section, side view and base punching**



base punching to DIN 43659 in one line for trunkings of widths 20 - 30 - 43 and 60 mm, and in two lines for trunkings of widths 80 - 100 - 120 and 150 mm (distance between lines: 50 mm).