

## DVR/NVR fast operational guidelines

### 一、The installation of the hard disk

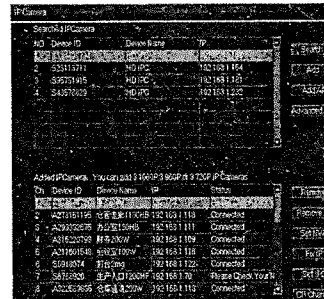
1. When the power of host is disconnected, unscrew the hard disk video recorder screws on the side and rear panel, then removing the cover plate.
2. Using the hard drive screwed to the chassis backplane.
3. Let the other end of the hard drive cable, power cord connect to the hard disk.
4. Cover chassis plate and plate with screws .
5. Put the display connected to the host at the back of the HDMI or VGA output, plug in cable, the equipment that is connected to complete.

### 二、Machine setting

1. **DVR\NVR Equipment login:** After the connection, and power it, the front panel indicator light of the hard disk video recorder on, the system shows normal boot screen. After completion of loading the pop-up login interface, the default account is admin, the password is blank. As shown below:



2. **NVR connect the IPC operation method :** Click the right mouse on the main interface to open the system menu —Video management . Click the "search device" button , Can search out all the IPC devices within the local area network (LAN) . As shown below:

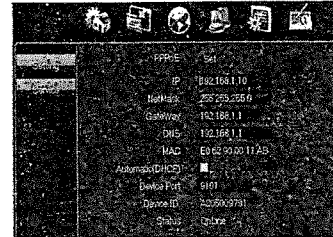


In the interface . Click on the any device which have searched . Click the "add" button . The device can be added to the below in the list of equipment have been added and automatically connect to this device ; When there is a net broken , Or IP conflict , . Can choose "a key set IP" or "IPC video source Settings" rapid change for the correct IP which normal figure.

3. **DVR\NVR Playback:** Click the right mouse and the button of system main interface . choosing "video playback" in the submenu of the pop-up system, then the system open the playback interface. Click the channel number that need to be played, and drag the yellow shaft to select the period of video playback, then click the "play" button, you can open the corresponding channel of video replays; insert U disk to choose the backup to the U disk, it can backup channel video accordingly. Right-click action the audition strip can be hidden. As shown below:



4. **DVR\NVR Network Settings:** Click the right mouse button of the system main interface, choose the " system settings — network settings" in a pop-up menu system, it can change the IP address of the NVR; also can find the device No (NVSIP no.), if the "device status" shows that has been on line, that means can be watched remotely one mobile phones and computers. As shown below:



### 三、Mobile phone watch method:

1. Scanning the qr code on the left with android mobile .

Download the mobile client NVSIP and installation . (Scanning qr code on the right with Apple mobile or directly on the iPhone App Store search "NVSIP" click to install.)

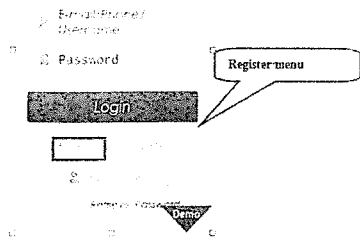
2. After the first run the software need to register account to log in and manage equipment , through



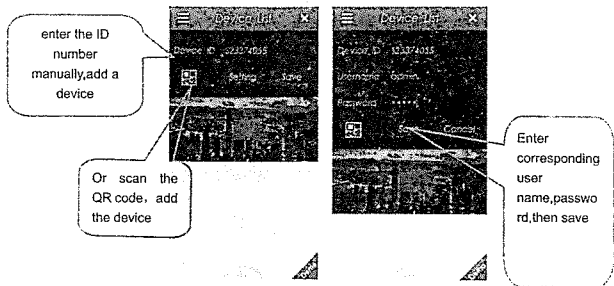
# DVR/NVR

## Quick Operation Guide

a registered account can add to manage multiple devices. Or using the visitors account to log in (local) to add a single device to check.



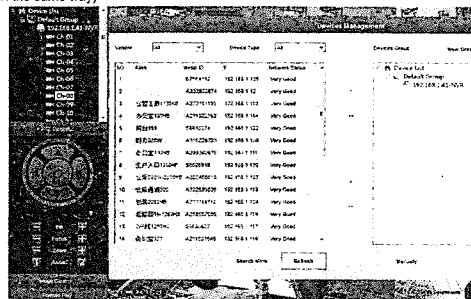
3. Click in the top right corner of the button after a successful login . Scanning NVSIP or code to add the equipment in the startup wizard (or manually enter NVSIP) . And input device in advanced options corresponding user name and password (admin/empty), click the device name, choose a good channel can be normal access device to watch the figure. (Remote viewing field equipment only need to add the NVSIP no., other operating is in the same way)



#### 四、 The method of computer CMS settings:

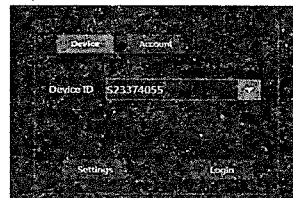
1. Enter into the online CD site: <http://www.cd-lpc.com> Download the centrally managed software CMS[Windows version], and install it.
2. Login the CMS software(admin/the password is empty), enter into the device management, after search to the device, click the dextrad double arrows, add the device, click exit, returns to the device list, double-click the device name and channel respectively in equipment list can watch out of the figure. (Remote viewing field equipment only need

to choose the manually add the NVSIP device in the device management, other operating is in the same way)



#### 五、 IE viewing method :

It can access to remote sites, [www.nvsip.com](http://www.nvsip.com) After the entrance. Choose the device number to login . Input devices NVSIP number . then you can do the remote viewing and playback operation, etc.



**Friendly reminder:** When the remote viewing is failing. click the right main menu.

(system setting—network setting—network connection) To check the equipment status is online or not. If it doesn't come online, please check the network connection is normal or not, remove the option of automatically obtain IP address. Manual changes a IP network that is the same with LAN routing, change the gateway to the IP address of entering the router.

## PRODUCT WARRANTY CARD

All the products sold are covered by 12months warranty from the date of invoice.

Warranty instructions:

1. Please contact us when the product is caused by its own fault within 1year warranty.
2. Please mail us your written warranty card as soon as possible after purchasing our products so that we can repair or replace this product to its original operation condition. Or the company will not deal with it.

3. Please write the truth on the warranty card.

4. Paid for repairing as follows:

- A: Equipment failure caused by human operation
- B: Equipment failure caused by not conforming to the using environment
- C: No warranty card
- D: Warranty expired

Product model \_\_\_\_\_ Product serial number \_\_\_\_\_ Purchasing time \_\_\_\_\_

User's name \_\_\_\_\_ Contact \_\_\_\_\_ Telephone \_\_\_\_\_

Dealer Name \_\_\_\_\_ Contact \_\_\_\_\_ Telephone \_\_\_\_\_

**Note:** Please keep the warranty card for the better service.