

PLEASE CHECK WWW.MOLEX.COM FOR LATEST PART INFORMATION

Part Number: [0015976081](#)
Status: **Active**
Overview: Mini-Fit® TPA Plugs and Receptacles
Description: Mini-Fit® TPA Plug Housing, 4.20mm Pitch, Dual Row with Secondary Terminal Retention, 8 Circuits

Documents:

[3D Model](#) [Product Specification PS-5556-003 \(PDF\)](#)
[Drawing \(PDF\)](#) [RoHS Certificate of Compliance \(PDF\)](#)
[Product Specification PS-45750-001 \(PDF\)](#)

Agency Certification

CSA LR19980
 UL E29179

General

Product Family Crimp Housings
 Series [30068](#)
 Application Power, Wire-to-Wire
 Comments Current = 13A max. per circuit when header is mated to a receptacle loaded with [45750](#) series terminals crimped to 16 AWG wire. . See Molex product specification PS-45750-001 for additional current derating information.
 Overview [Mini-Fit® TPA Plugs and Receptacles](#)
 Product Name Mini-Fit® TPA
 UPC 800754202435

Physical

Circuits (maximum) 8
 Color - Resin Black
 Flammability 94V-0
 Gender Male
 Glow-Wire Compliant No
 Material - Resin Polyester
 Net Weight 3.627/g
 Number of Rows 2
 Packaging Type Bag
 Panel Mount No, Yes
 Pitch - Mating Interface 4.20mm
 Stackable No
 Temperature Range - Operating -40°C to +105°C

Electrical

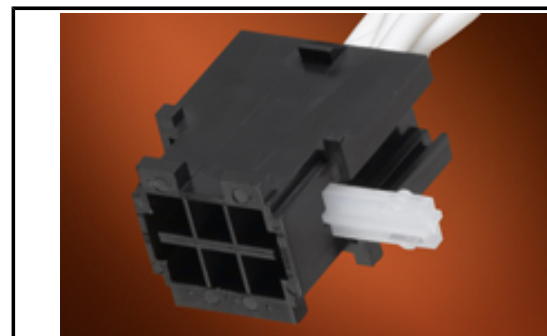
Current - Maximum per Contact 13.0A

Material Info

Old Part Number 30068-08

Reference - Drawing Numbers

Product Specification PS-45750-001, PS-5556-003
 Sales Drawing SD-30068-*



Series image - Reference only

EU ELV

Not Relevant

EU RoHS

Compliant

REACH SVHC

Contains SVHC(17. December 2014): No

Halogen-Free

Status

Not Low-Halogen

Need more information on product environmental compliance?

Email productcompliance@molex.com
 Please visit the [Contact Us](#) section for any non-product compliance questions.

China ROHS
 ELV

China RoHS
 Green Image
 Not Relevant

Search Parts in this Series

[30068](#) Series

Mates With

[30068](#) Plug Housing, [30069](#) Header, [30070](#) Right Angle Header, [44473](#) Right Angle Header

Use With

[30072](#) Mini-Fit® TPA Key