



End Caps

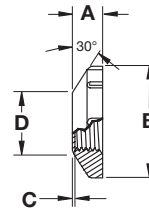
- Use alone or with Cushioned Sensor Mount.
- Beveled edge deflects lateral impacts.
- Reduces and or eliminates abrasion damage.
- Reduces downtime and sensor replacement expenses.



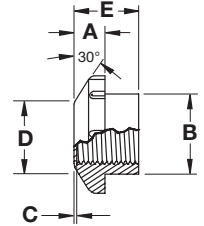
Specifications

Material: Delrin (Non-Shielded)
 Glass-filled Nylon (Shielded)
 Polypropylene (EC30)

Shielded



Non-Shielded



End Caps

Shielded	Style	A	B	C	D	E	Thread
EC08	8mm	0.21" (5.28)	0.60" (15.2)	0.015" (.38)	0.25" (6.45)	N/A	M8 x 1
EC12	12mm	0.25" (6.35)	0.96" (24.4)	0.015" (.38)	0.45" (11.4)	N/A	M12 x 1
EC18	18mm	0.33" (8.38)	1.23" (31.3)	0.03" (.76)	0.73" (17.5)	N/A	M18 x 1
EC30	30mm	0.30" (7.62)	1.72" (43.7)	0.03" (.76)	1.13" (28.6)	N/A	M30 x 1
Non-Shielded							
EC08N	8mm	0.20" (5.08)	0.57" (14.5)	0.015" (.38)	0.25" (6.45)	0.37" (9.50)	M8 x 2
EC12N	12mm	0.25" (6.35)	0.90" (22.9)	0.03" (.76)	0.45" (11.4)	0.68" (17.3)	M12 x 1
EC18N	18mm	0.33" (8.38)	1.34" (34.0)	0.025" (.64)	0.67" (17.0)	0.70" (17.8)	M18 x 1
EC30N	30mm	0.31" (7.87)	1.75" (44.5)	0.04" (1.02)	1.15" (29.2)	0.90" (22.9)	M30 x 1

Note: The wear surface thickness (Dimension C) does not reduce a sensor's sensing range, but will consume an equal amount of the gap required between the sensor and target.

Block Mounts

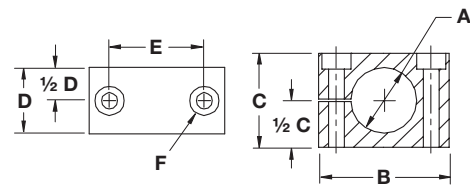
- Bond to sensor face with any epoxy.
- Use when threads are inaccessible.
 - Reduces and/or eliminates abrasion damage.
 - Reduces downtime and sensor replacement expenses.



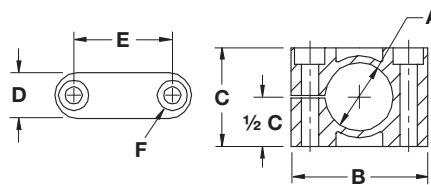
Specifications

Material: Glass-filled Nylon
 Anodized aluminum

Metallic



Nylon



Block Mounts

Metallic	Style	A	B	C	D	E	F
BM08M	8mm	0.32" (8.05)	0.62" (15.8)	1.0" (25.4)	0.75" (19.0)	0.72" (18.4)	0.14" (3.58)
BM12M	12mm	0.48" (12.1)	1.0" (25.4)	1.5" (38.1)	0.75" (19.0)	0.98" (24.9)	0.20" (5.08)
BM18M	18mm	0.71" (18.1)	1.25" (31.7)	1.5" (38.1)	1.0" (25.4)	1.21" (30.7)	0.18" (4.58)
BM30M	30mm	1.19" (30.1)	2.0" (50.8)	2.5" (63.5)	1.38" (34.9)	2.03" (51.5)	0.26" (6.73)
Nylon							
BM08N	8mm	0.32" (8.05)	1.06" (27)	0.63" (16)	0.47" (12)	0.67" (17)	0.18" (4.5)
BM12N	12mm	0.48" (12.1)	1.26" (32)	0.79" (20)	0.47" (12)	0.87" (22)	0.18" (4.5)
BM16N	16mm	0.63" (16.1)	1.42" (36)	1.02" (26)	0.47" (12)	1.02" (26)	0.18" (4.5)
BM18N	18mm	0.71" (18.1)	1.42" (36)	1.02" (26)	0.47" (12)	1.02" (26)	0.18" (4.5)
BM20N	20mm	0.79" (20.1)	1.77" (45)	1.18" (30)	0.59" (15)	1.26" (32)	0.22" (5.5)
BM22N	22mm	0.87" (22.1)	1.77" (45)	1.18" (30)	0.59" (15)	1.26" (32)	0.22" (5.5)
BM30N	30mm	1.18" (30.1)	2.17" (55)	1.50" (38)	0.71" (18)	1.65" (42)	0.22" (5.5)

Dimensions in Inches (mm)