

# SlimRay™ Pre-Wired LED Array Holders for Lumileds LUXEON\*



**Simplifying the LED installation process by eliminating the need for labor-intensive hand soldering, low-profile SlimRay™ Pre-Wired LED Holders are ideal for Lumileds LUXEON\* and similar next-generation COB arrays**



SlimRay™ Pre-Wired LED Array Holders for Lumileds LUXEON\*

## Features and Benefits

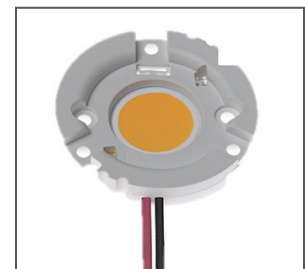
Pre-wired high-pressure crimped terminals	Enable solderless attachment of power wires. Reduce risk of COB damage and scrapping caused by excessive handling, solder heat and/or inconsistent soldering processes. Eliminate cold solder joints
LED Chip-on-Board (COB) pre-hold feature	Minimizes installation time by allowing LED array to be secured to the holder during final assembly
Low-profile stepped design: 6.70mm height at outer ring, 4.40mm at inner ring and optics seating area	Provides design flexibility in many applications
Robust, insert-molded connector housing	Ensures stable, long-term electrical, mechanical and thermal connections in elevated ambient temperatures. Requires extreme force for wire pull-out to occur
Gold-plated compression contacts	Deliver power to COB array pads. Boost reliability and decrease resistance in crucial contact areas
Screw-mount attachment method for securing array to heat sink	Simple attachment reduces fixture manufacturing time
Flat-top surface with integrated bevel surrounding the Light Emitting Source (LES)	Creates a favorable seating plane for optics. Integrated bevel aids light output. Provides a clean, finished look to the holder design.
Highly reflective white thermoplastic housing	Promotes light output. Enables long-term mechanical stability in high-temperature environments



180555-103x  
16.00 by 19.00mm Array Holder



180555-104x  
20.00 by 24.00mm Array Holder



180555-105x  
28.00 by 28.00mm Array Holder

## Applications

### General Illumination

- Downlighting
- Spotlighting
- Troffers
- High Bay

### Area Lighting

- Roadways
- Parking Lots
- Wall Packs



Recessed Downlighting in Residential and Commercial Buildings

\*LUXEON is a registered trademark of Lumileds

# SlimRay™ Pre-Wired LED Array Holders for Lumileds LUXEON\*



## Specifications

### Reference Information

Packaging: Tray  
 UL File No: Pending  
 UL Rating Pending UL8754  
 CSA File No.: E345583  
 Designed In: Millimeters  
 RoHS: Yes  
 REACH SVHC: Contains SVHC: No

### Electrical

Voltage (max.): 300V DC  
 Current (max.): 3.0A  
 Contact Resistance (max.): 20 milliohms  
 Dielectric Withstanding Voltage: 300V DC  
 Insulation Resistance (min.): 5000 Megohms

### Physical

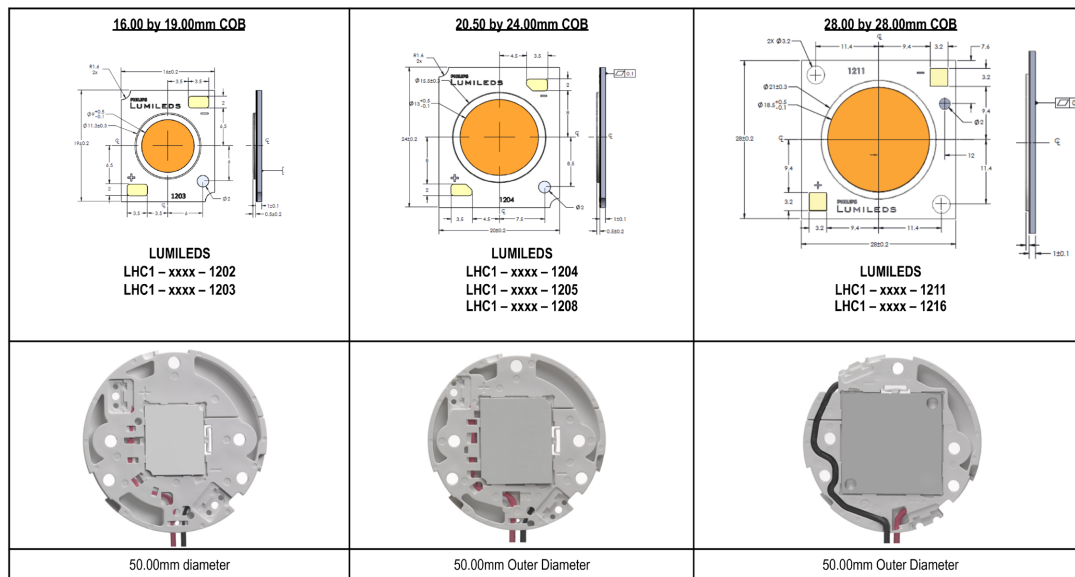
Housing: White PBT 30% Glass fill UL94V  
 Contact: Copper Alloy  
 Plating:  
 Contact Area — Gold (Au)  
 Underplating — Nickel (Ni)

### Mechanical

Wire Pull Out Force (min.): 50N  
 Durability (min.): 5 Cycles

## Ordering Information

Order No.	COB Footprint	Wire Length (mm)	Wire Type	Mounting Method	COB Pre-Hold	Optical Attachment	Min, Order Quantity (MOQ)
<a href="#">180555-1031</a>	16.00 by 19.00mm	600.00	UL3266 20AWG 125°C	M3 Screw	Yes	3-Latch Bayonet; Zhaga-type Others	480
<a href="#">180555-1034</a>		250.00					
<a href="#">180555-1041</a>	20.00 by 24.00mm	600.00					
<a href="#">180555-1044</a>		250.00					
<a href="#">180555-1045</a>		700.00					
<a href="#">180555-1051</a>	28.00 by 28.00mm	600.00					
<a href="#">180555-1054</a>		250.00					
<a href="#">180555-1055</a>		700.00					



[www.molex.com/link/ledholderluxeon.html](http://www.molex.com/link/ledholderluxeon.html)

\*LUXEON is a registered trademark of Lumileds