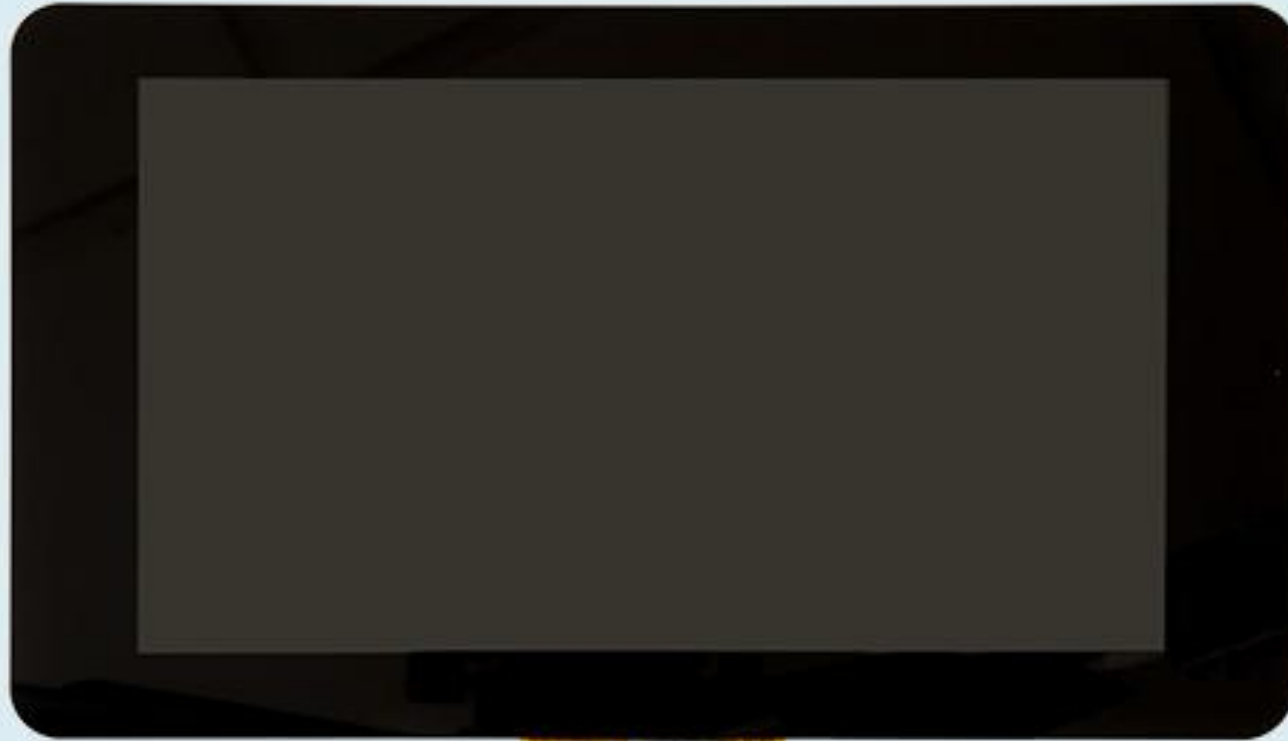
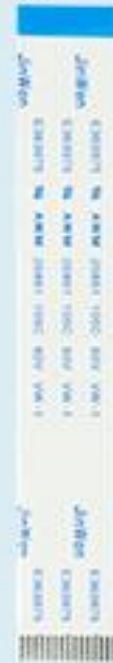


1.



2.



3.



Parts List

1. 7" Touch screen display
2. Display ribbon cable
3. 4 x jumper wires
4. 4 x stand-offs
5. 4 x screws
6. Adapter board



6.



4.



5.

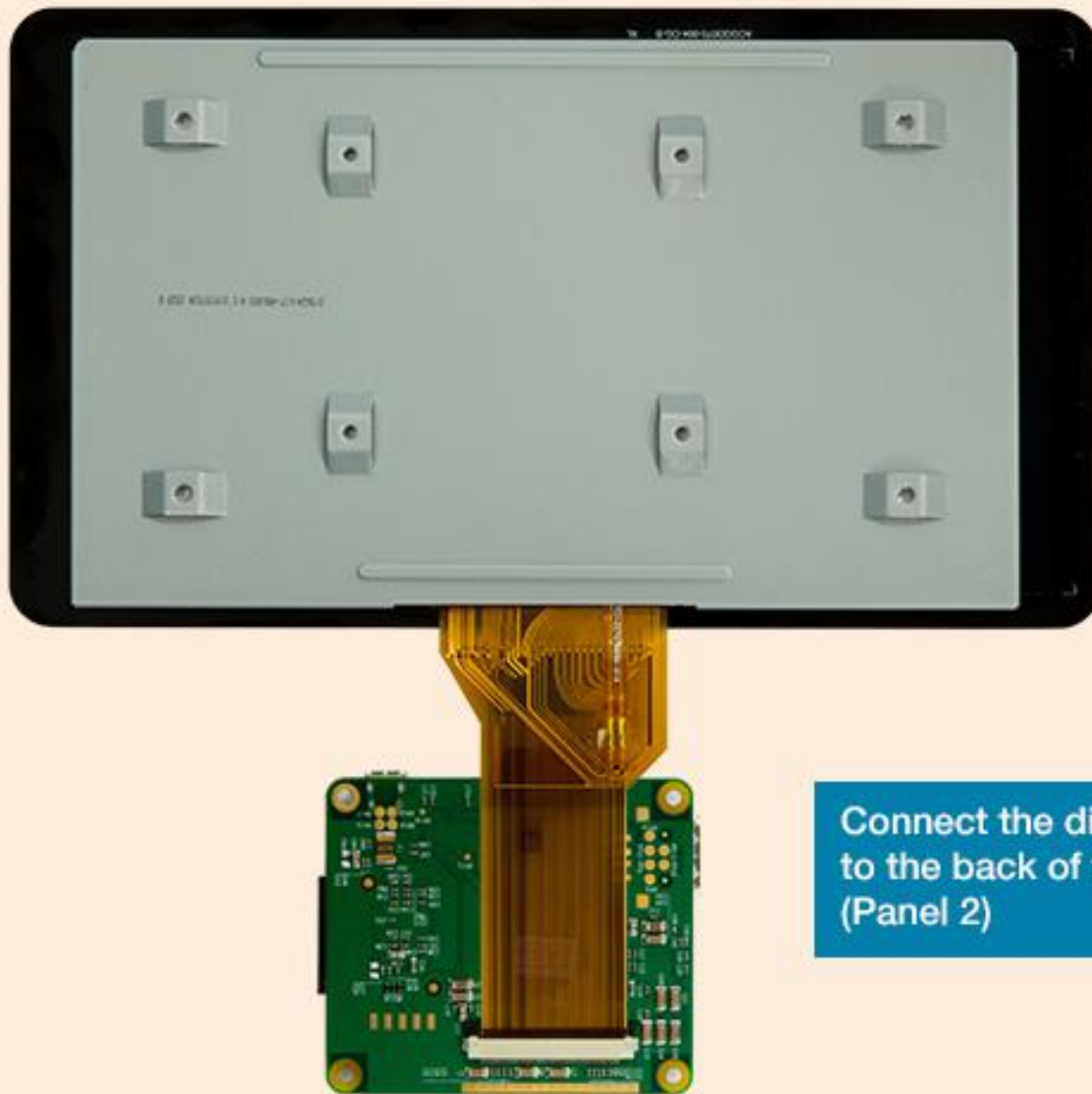


5.



5.

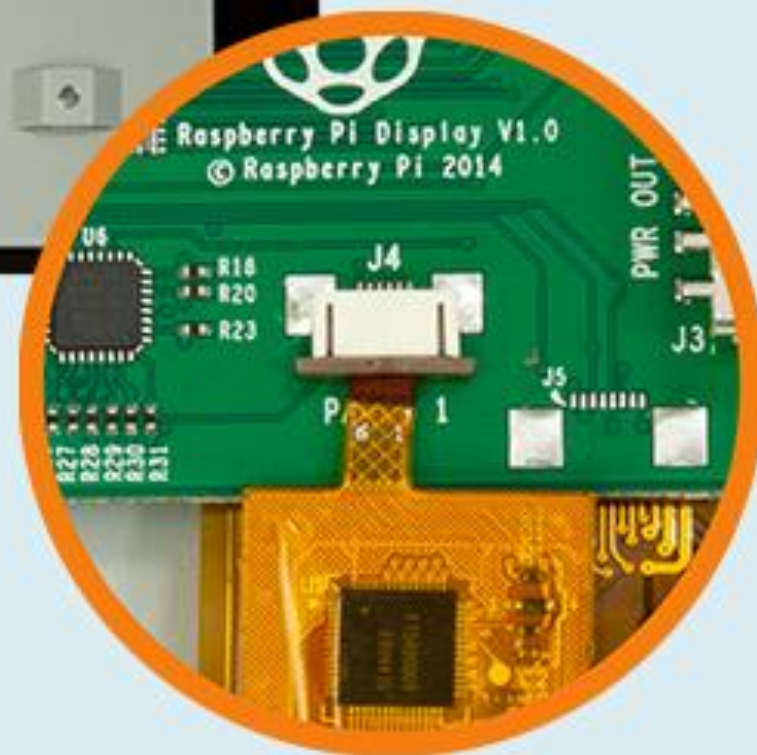




Connect the display ribbon cable to the back of the adapter board (Panel 2)



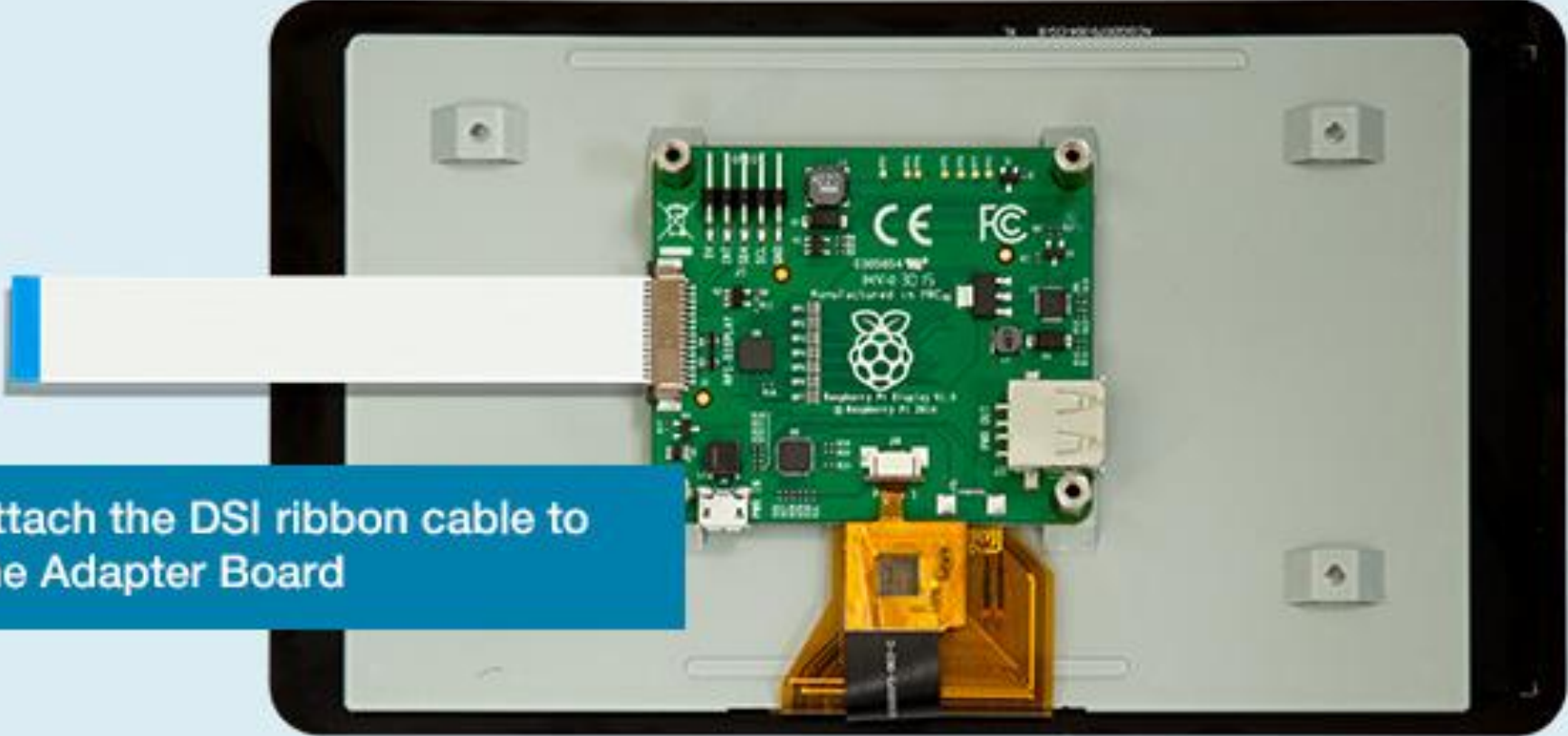
Lie the adapter board onto the back of the display then connect the touch screen ribbon cable into J4 (Panel 1)





Attach the 4 x Standoffs & screw them through the adapter board into the back of the display



A Raspberry Pi 4 Model B is mounted on a silver metal adapter board, which is placed inside a black tablet. A white DSI ribbon cable is connected to the top of the Raspberry Pi. A yellow ribbon cable is connected to the bottom of the Raspberry Pi. The adapter board has four screws visible. The Raspberry Pi board has the text "Raspberry Pi 4 Model B" and "Manufactured in PRC" visible.

Attach the DSI ribbon cable to the Adapter Board



Use the 4 x screws to secure the Raspberry Pi board to the Standoffs then connect the DSI ribbon cable to the Raspberry Pi



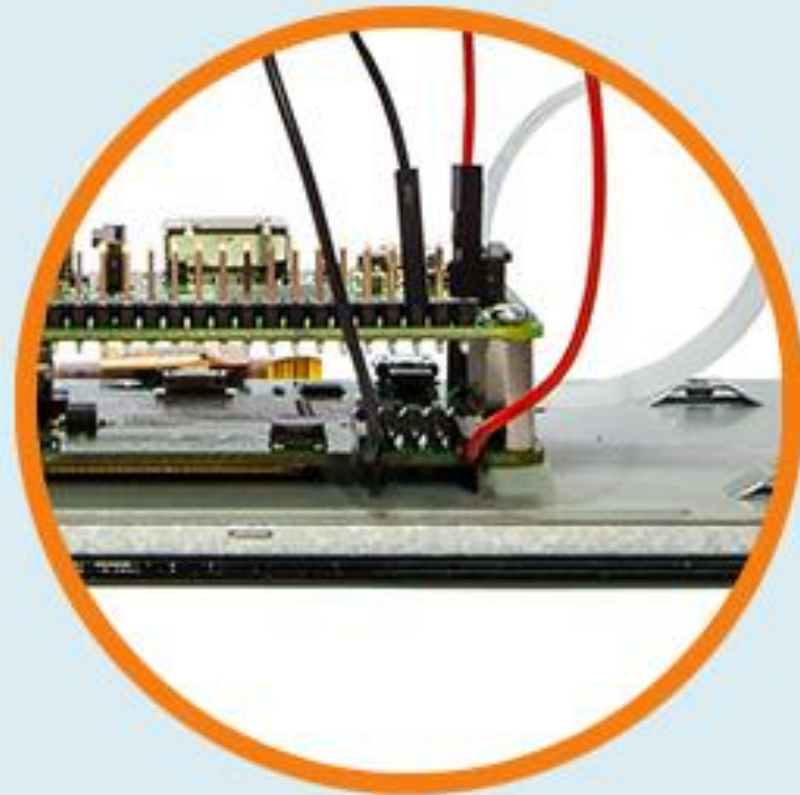
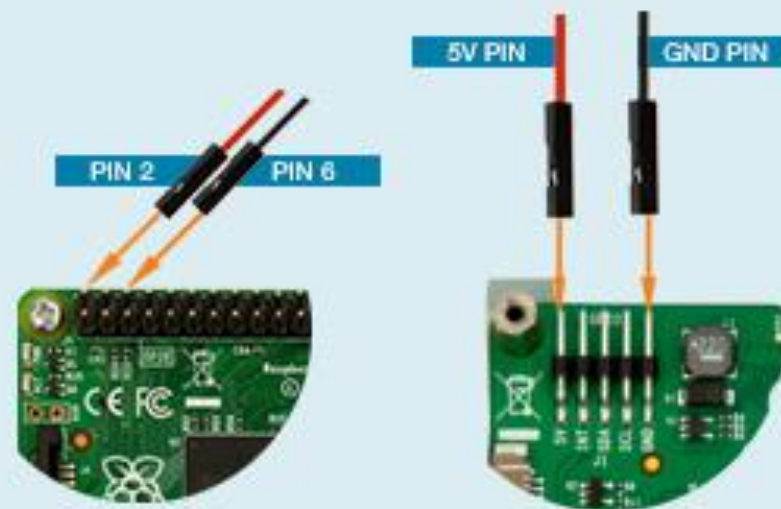
Connect the jumper wires from the Raspberry Pi to the adapter board

Raspberry Pi2 GPIO Header

Pin#	NAME	NAME	Pin#
01	3.3v DC Power	DC Power 5v	02
03	GPIO02 (SDA1 , PC)	DC Power 5v	04
05	GPIO03 (SCL1 , PC)	Ground	06
07	GPIO04 (GPIO_GCLK)	(TXD0) GPIO14	08
09	Ground	(RXD0) GPIO15	10
11	GPIO17 (GPIO_GEN0)	(GPIO_GEN1) GPIO18	12
13	GPIO27 (GPIO_GEN2)	Ground	14
15	GPIO22 (GPIO_GEN3)	(GPIO_GEN4) GPIO23	16
17	3.3v DC Power	(GPIO_GEN5) GPIO24	18
19	GPIO10 (SPI_MOSI)	Ground	20
21	GPIO09 (SPI_MISO)	(GPIO_GEN6) GPIO25	22
23	GPIO11 (SPI_CLK)	(SPI_CE0_N) GPIO08	24
25	Ground	(SPI_CE1_N) GPIO07	26
27	ID_SD (PC ID EEPROM)	(PC ID EEPROM) ID_SC	28
29	GPIO05	Ground	30
31	GPIO06	GPIO12	32
33	GPIO13	Ground	34
35	GPIO19	GPIO16	36
37	GPIO26	GPIO20	38
39	Ground	GPIO21	40

Rev. 1
26/01/2014

<http://www.element14.com>





Insert a Micro SD Card into the Raspberry Pi with the Latest version of Raspbian installed then attach a 2Amp Power Supply to the Raspberry Pi Adapter Board to power the display and Raspberry Pi Board.

Alternative methods of powering the Touchscreen Display

Connect a MicroUSB cable from the 'PWR OUT' port on the adapter board to the 'PWR IN' MicroUSB port on the Raspberry Pi board. Then connect a 2Amp external power supply to the 'PWR IN' port on the adapter board

Or

Power both boards independently using separate 2Amp external power suppliers connected to the 'PWR IN' ports on both the Raspberry Pi board and the adapter board

Operating Software:

Now that you've assembled your Raspberry Pi Touchscreen Display, you will need to download and install the latest version of the Raspbian Operating System - available to download from the Raspberry Pi Foundation at: <https://www.raspberrypi.org/downloads/>

Once installed, type

```
sudo apt-get update
```

and

```
sudo apt-get upgrade
```

(in that order) to install all of the latest drivers and software to support the Touchscreen Display.

