

**PLEASE CHECK WWW.MOLEX.COM FOR LATEST PART INFORMATION**

**Part Number:** [1510481401](#)  
**Status:** **Active**  
**Overview:** [CP-6.5 Wire-to-Board Connector System](#)  
**Description:** CP-6.5 Header, 6.50mm Pitch, Dual Row, Vertical, Polarized, Positive Lock, Tray Packaging, 4 Circuits, Blue

**Documents:**

[3D Model](#) [Product Specification PS-151048-0001 \(PDF\)](#)  
[Drawing \(PDF\)](#) [RoHS Certificate of Compliance \(PDF\)](#)

**General**

Product Family	PCB Headers
Series	<a href="#">151048</a>
Application	Wire-to-Board
Comments	See Product Specification for maximum current rating by circuit size and wire AWG
Overview	<a href="#">CP-6.5 Wire-to-Board Connector System</a>
Product Name	CP-6.5
UPC	889056066716

**Physical**

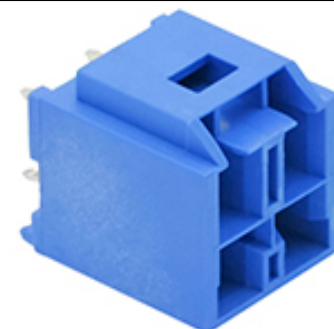
Breakaway	No
Circuits (Loaded)	4
Circuits (maximum)	4
Color - Resin	Blue
Durability (mating cycles max)	30
First Mate / Last Break	No
Glow-Wire Compliant	No
Guide to Mating Part	No
Keying to Mating Part	Yes
Lock to Mating Part	Yes
Material - Metal	Copper Alloy
Material - Plating Mating	Matte Tin
Material - Plating Termination	Matte Tin
Material - Resin	Polyamide
Net Weight	2.884/g
Number of Rows	2
Orientation	Vertical
PC Tail Length	3.80mm
PCB Locator	Yes
PCB Retention	Yes
PCB Thickness - Recommended	1.60mm
Packaging Type	Tray
Pitch - Mating Interface	6.50mm
Plating min - Mating	1.270µm
Plating min - Termination	1.270µm
Polarized to Mating Part	Yes
Polarized to PCB	Yes
Temperature Range - Operating	-40°C to +105°C
Termination Interface: Style	Through Hole

**Electrical**

Current - Maximum per Contact	10.0A
Voltage - Maximum	600V

**Solder Process Data**

Lead-freeProcess Capability	WAVE
-----------------------------	------



*Series image - Reference only*

**EU ELV**

**Not Relevant**

**EU RoHS**

**Compliant**

**REACH SVHC**

Contains SVHC(2015 June 15): No

**Halogen-Free**

**Status**

**Not Low-Halogen**

**Need more information on product environmental compliance?**

Email [productcompliance@molex.com](mailto:productcompliance@molex.com)  
Please visit the [Contact Us](#) section for any non-product compliance questions.

China ROHS

ELV

Green Image

Not Relevant

**Search Parts in this Series**

[151048](#) Series

**Mates With**

CP-6.5 Receptacle Housing [151049-2401](#)

**Material Info**

**Reference - Drawing Numbers**

Product Specification

PS-151048-0001, RPS-151048-0001,

RPS-151048-0002

Sales Drawing

SD-151048-0001

This document was generated on 08/26/2015

**PLEASE CHECK [WWW.MOLEX.COM](http://WWW.MOLEX.COM) FOR LATEST PART INFORMATION**