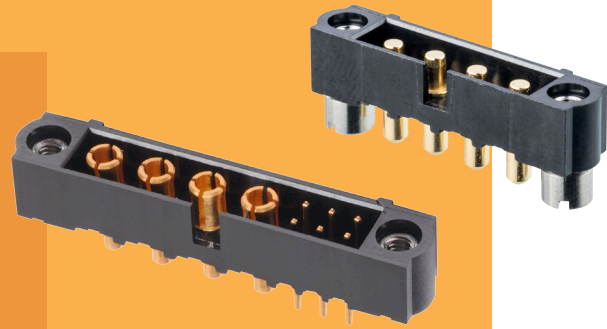


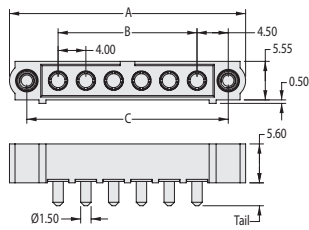
## Male Vertical Off-The-Shelf

- A selection of stocked Datamate Mix-Tek solder tail standard layouts.
- Choice to suit two PCB thicknesses and two stud lengths.
- Mates with connectors shown on page 79.
- Standard Power contacts rated to 20A, signal to 3A.
- High Power rated to 40A nominal, up to 80A max.

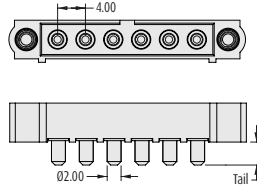


DATAMATE MIX-TEK

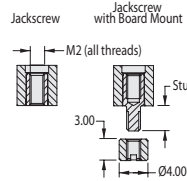
### POWER CONTACTS ONLY



**Standard Power**

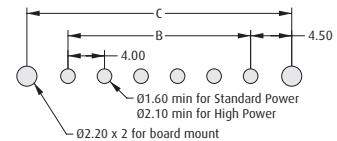


**High Power**



### CALCULATION

<b>A</b>	$B + 14$
<b>B</b>	$(\text{No. of Power contacts} - 1) \times 4$
<b>C</b>	$B + 9$



**Recommended PC Board Pattern**

### HOW TO ORDER

Refer to pages 77, 77a for stocked sizes

**M80 - 5000000 XX - XX - XXX - 00 - 000**

JACKSCREW	
<b>M1</b>	Jackscrew only
<b>M2</b>	With 3.5mm Board Mount stud
<b>M3</b>	With 5mm Board Mount stud

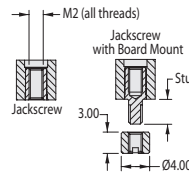
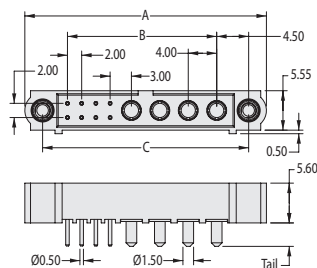
#### NO. OF POWER CONTACTS

**02, 04, 06, 08, 10**

#### POWER CONTACT PART NO.

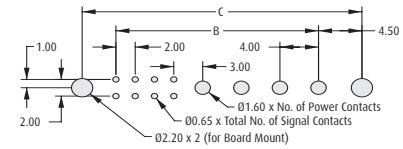
<b>331</b>	3.5mm Tail Standard Power
<b>332</b>	5 mm Tail Standard Power
<b>PM1</b>	3.5 mm Tail High Power

### SIGNAL AND POWER CONTACTS



### CALCULATION

<b>A</b>	$B + 13$
<b>B</b>	$(\text{No. of Power contacts} - 1) \times 4 + \text{Total no. of Signal contacts} + 1$
<b>C</b>	$B + 8$



**Recommended PC Board Pattern**

### HOW TO ORDER

**M80 - 5T1 XX 05 XX - XX - 331 - 00 - 000**

#### NO. OF SIGNAL CONTACTS

**02, 04, 06, 08, 12**

#### JACKSCREW

<b>M1</b>	Jackscrew only
<b>M2</b>	With 3.5mm Board Mount stud

Refer to page 77 for stocked sizes.

#### NO. OF POWER CONTACTS

**02, 04**

All dimensions in mm.