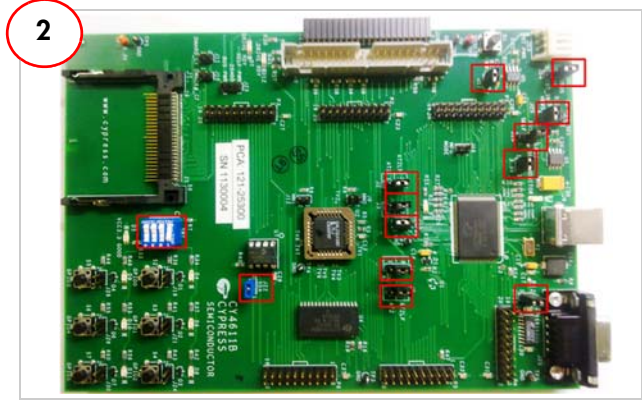


CY4611B EZ-USB® FX2LP™ USB to ATA/ATAPI Reference Design QUICK START GUIDE



1 Insert the kit CD/DVD and install the kit contents.



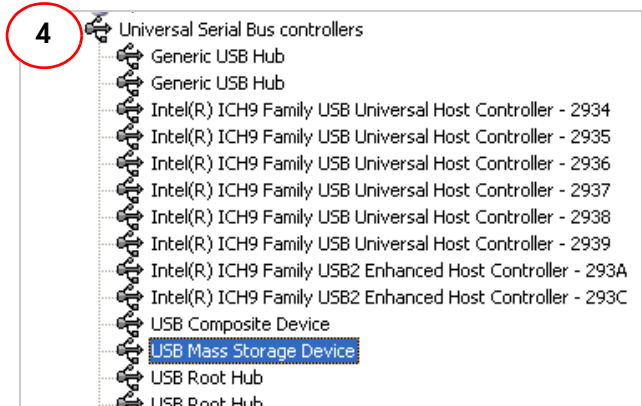
2 By default, CY4611B board is programmed to detect a Compact Flash card in Bus power mode.

The default settings on the CY4611B RDK Board are

- Pins 1-2 Short: J6, J7, J14, J15, J17, J22, J28
- Pins 2-3 Short: J2, J3, J4, J5
- Open Jumpers: J8, J10, J11, J12, J16, J19, J21, J23, J24, J26, J29, J30
- Select VBUS using J25
- SW1: Keep 1 OFF to remove ATA Bus from Tristate; 2, 3, and 4 ON



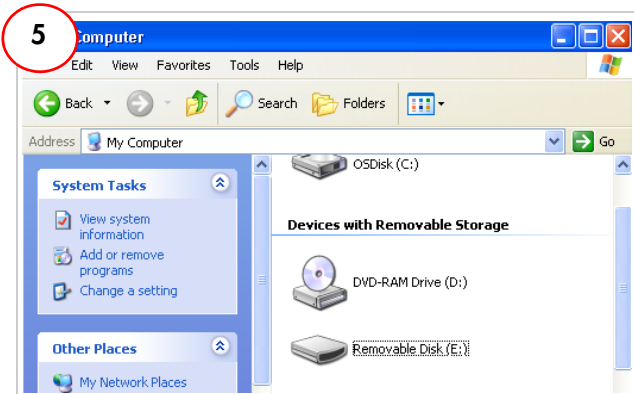
3 Insert the Compact Flash (CF) card into J1 connector on board. The CF card should support ATA/ATAPI-6 standard. Note: A sample CF card is provided with the kit.



4 To connect the board to the PC, plug the USB A-to-B cable to USB connector on the board.

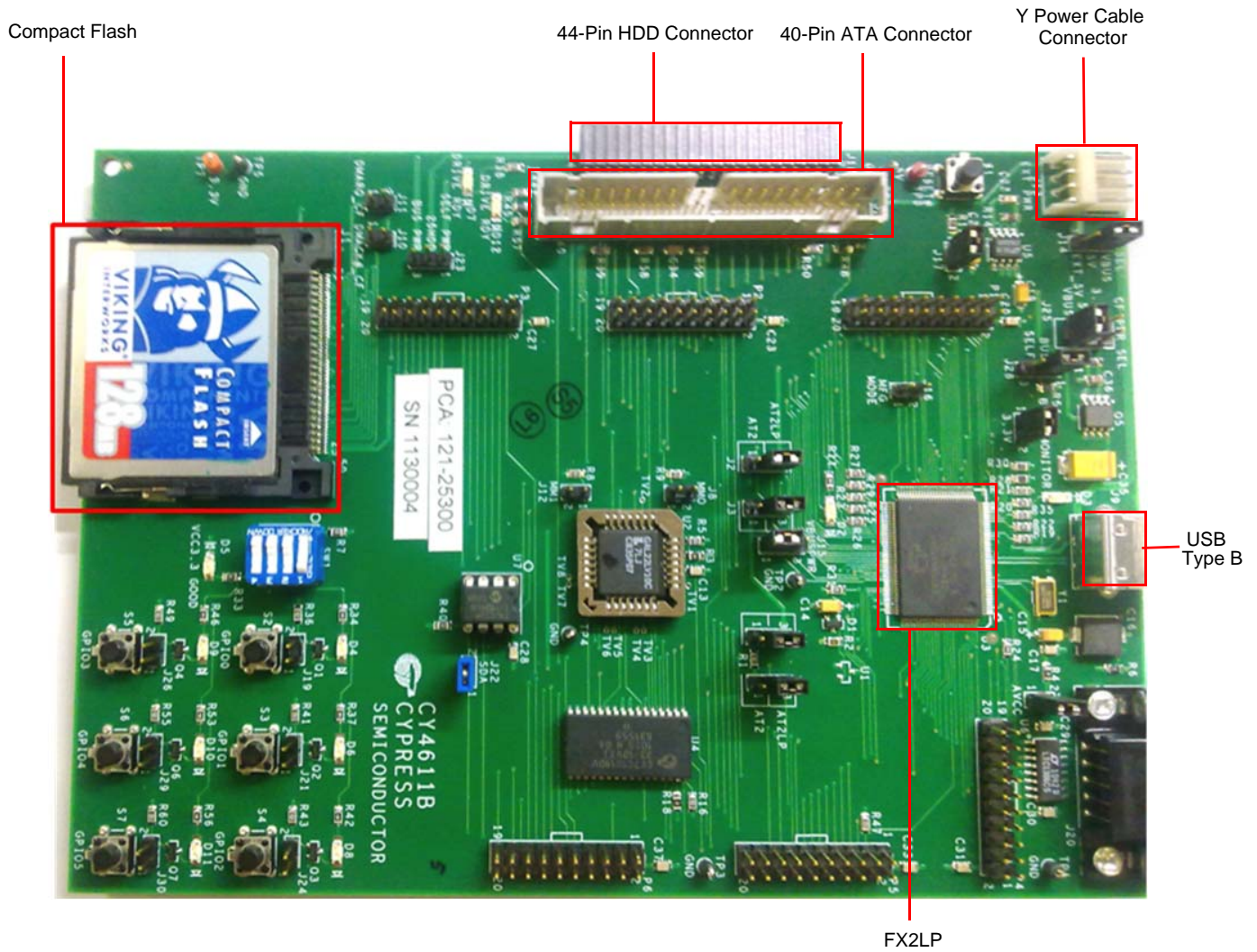
Plug the other end of the cable into one of the PC's host controller ports.

The Board enumerates as "USB Mass Storage Device" as shown in your PC's Device Manager Window.



5 Open My Computer (XP OS) or Computer (Win7 OS) in your PC and verify if CF card is listed as "Removable disk". Check the connectivity of CF card by copying files.

CY4611B EZ-USB® FX2LP™ USB to ATA/ATAPI Reference Design QUICK START GUIDE



For the latest information about this kit visit

www.cypress.com/go/CY4611B

© 2011-2012 Cypress Semiconductor Corporation. All rights reserved. All trademarks or registered trademarks referenced herein are the properties of their respective owners.



DOC#: 001-69203 REV *A