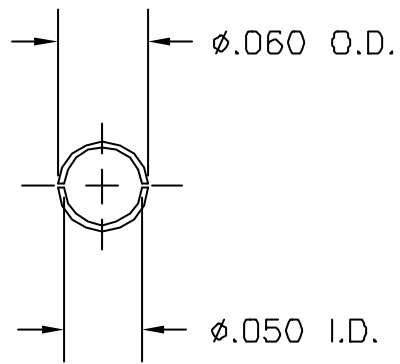
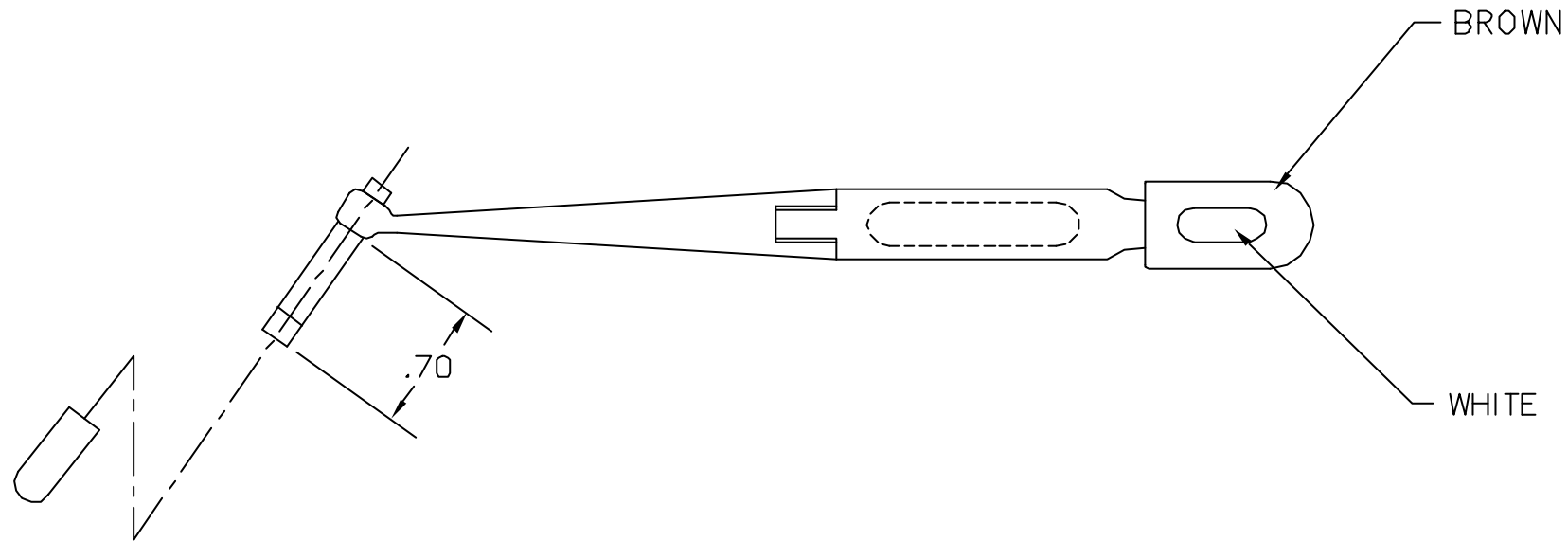
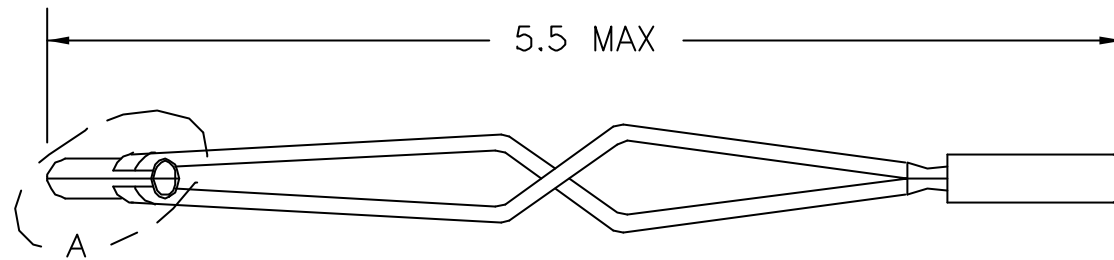


REVISIONS				
REV. SYM.	E.C.O. NUMBER	DESCRIPTION	BY DATE	APP'D DATE
1		ORIGINAL RELEASE	MGS 12/6/86	DE 12/86



DETAIL A




**UNCONTROLLED DOCUMENT
WILL NOT BE UPDATED**

RESTRICTED & CONFIDENTIAL

CONFIDENTIAL PROPERTY OF DANIELS MANUFACTURING CORP. NOT TO BE DISCLOSED TO OTHERS, REPRODUCED OR USED FOR ANY OTHER PURPOSE, EXCEPT AS AUTHORIZED IN WRITING BY DANIELS MANUFACTURING. MUST BE RETURNED TO DANIELS MANUFACTURING CORP. ON COMPLETION OF ORDER OR OTHER PURPOSE FOR WHICH LENT.

DO NOT SCALE DRAWING

ITEM	PART NO.	QTY.	DESCRIPTION/REMARKS
DRN.	MGS	DATE 12/6/86	 DANIELS MANUFACTURING CORP. ORLANDO, FLORIDA CAGE 11851 TITLE REMOVAL TOOL #22 ENVELOPE DRAWING WHERE USED: SIZE B SCALE NTS CAD P/N DRK225-22-ENV SHEET 1 OF 1 POSTING DWG. NO. DRK225-22-ENV REV. 1
CHK'D.	LME	DATE 12/18/86	
APP'D.	KR	DATE 12/18/86	
APP'D.		DATE	
NOTE: THIS DRAWING IS AN OUTLINE DRAWING OF THE RESPECTIVE DMC PART NUMBER INDICATED. ACTUAL DMC PART NUMBER IS DRAWING NUMBER WITHOUT THE "-ENV" SUFFIX.			