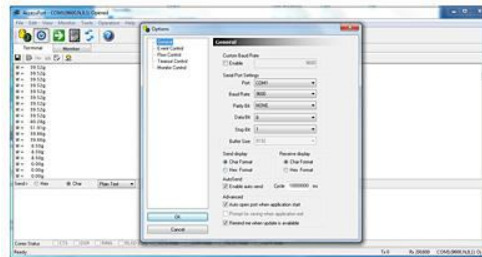


# FHB-600

## RS-232 Hi-Precision Weighing Balance



### PRODUCT DESCRIPTION

These Hi-Precision weighing balances are housed in an impact-resistant ABS plastic case with a stainless steel weighing pan, plastic draft shield (**AFHB-600 only**), splash-proof membrane keypad, levelling bubble and adjustable feet. Each scale has a secondary backlit LCD display on the rear, and can be either battery or mains powered via an AC/DC adaptor.

- 16 selectable weighing units including g, lb, oz, ct
- Splash-proof membrane keypad incorporating 6 function keys
- Impact-resistant ABS case with adjustable feet
- 34mm Hi-Contrast Front LCD display and 23mm Hi-Contrast Rear LCD Display both with Backlight
- Tare facility over the full range and can be actioned several times throughout a weighing cycle
- Zero tracking ensures stable and repeatable readings
- Plus/Minus weighing
- Parts Counting from 10, 20, 50 or 100 sample pieces
- Overload warning display and audible alarm
- Low Battery indication
- Selectable Auto Power Off from 3, 5 or 10 minutes of no activity or can be disabled for continuous operation
- User calibration checks with selectable weight from 1g up to the full capacity of the scale are available via certified M1 calibration weights (**not supplied**).
- RS-232 interface for data transfer to a PC or laptop (**AFHB-232 with FOC software downloadable from the manufacturer's website**)
- Supplied with Batteries, AC/DC Mains Power Adapter, Draft Shield (**for AFHB-600 only**)
- 2 year warranty

### TECHNICAL SPECIFICATION

<b>Capacity</b>	600g
<b>Resolution</b>	0.01g
<b>Min Pcs Wt</b>	0.1g
<b>Accuracy</b>	±0.02g

<b>Pan Size</b>	135 x 120mm
<b>Power</b>	6 x 1.5V AA Alkaline Battery ( <b>ALR-6</b> ) or AC/DC Mains Power Adaptor ( <b>supplied</b> )
<b>Dimensions</b>	300 x 205 x 75mm (unit), 170 x 165 x 125mm (draft shield - <b>AFHB-</b>
<b>Weight</b>	<b>600 only</b> 1.8Kg

---