



# Lubricating

<b>83</b>	<b>LUBRICATING</b>
85	Anti-Seize
89	Lubricants

## WHY USE A LOCTITE® LUBRICANT?

LOCTITE® Lubricants offer protection for industrial plants and equipment. This range includes organic, mineral and synthetic-based products meeting the requirements of industrial applications.

## WHAT IS THE FUNCTION OF A LUBRICANT?

The typical function of a lubricant is to protect against friction and wear. Lubricants are also used to protect against corrosion by displacing moisture and leaving a continuous coating on the part.

## WHAT CONSIDERATIONS ARE IMPORTANT WHEN CHOOSING A LUBRICANT?

When choosing a lubricant, it is important to consider the intended application as well as the environmental conditions to which the assembly will be exposed. Environmental conditions are critical to the successful selection of the right lubricant product. Factors including high temperature, harsh chemicals and contaminants may have an adverse effect on the expected lubricant performance.

## KEY BENEFITS OF USING A LOCTITE® LUBRICANT:

- Improved high temperature performance
- Higher lubricity
- Provides lubrication in extreme environments
- Superior water-washout properties
- Higher purity
- Protects against rust, corrosion, seizing and galling

## ANTI-SEIZE

LOCTITE® anti-seize products provide protection against rust, corrosion, seizing and galling, as well as lubrication. Anti-seizes are typically the products of choice for high temperature

applications because of their unique ability to provide protection in extreme temperature conditions. Each product contains a combination of solid lubricating agents resulting in different high temperature limits and lubricities. These are the two major factors in choosing the right anti-seize product for your application.

## METAL-FREE

The “Metal-Free” products utilize nonmetallic fillers to achieve high temperature resistance properties as well as lubricity. These fillers typically provide a much higher temperature resistance than that of metallic fillers and, due to the less abrasive nature of these fillers, they also typically provide lower K-values, resulting in higher lubricity.

## APPLICATIONS:

- Pump
- Gearbox
- Hoists
- Conveyor Systems
- Overhead Doors
- Way Lube
- Seals

## INDUSTRIES:

- Mining
- Wastewater
- Power Generation
- Food Processing
- Pulp and Paper
- Beverage



# Lubricating



Henkel Adhesive and Sealant Product Specialists are available to assist you. For application assistance, call 1-800-LOCTITE (562-8483); within Canada, call 1-800-263-5043; or, contact us through the web at [www.henkelna.com/loctite](http://www.henkelna.com/loctite).

**STRAIGHT FROM** *The Source*

# Anti-Seize



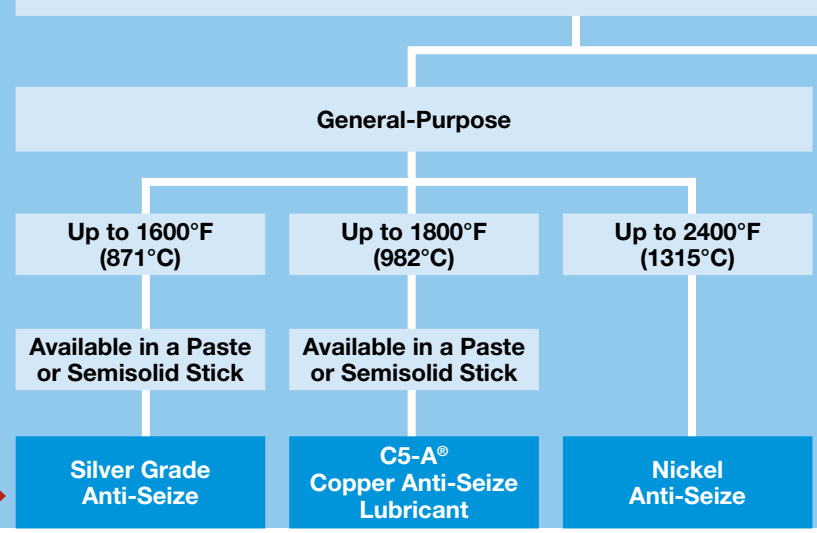
## Your Application

### HELPFUL HINT

- Look for this icon for Metal-Free LOCTITE® Anti-Seize Products.



## WHAT TYPE OF ANTI-SEIZE DO YOU REQUIRE?



## Solution

	Silver Grade Anti-Seize	C5-A® Copper Anti-Seize Lubricant	Nickel Anti-Seize
<b>Color</b>	Silver	Copper	Silver
<b>Solid Lubricating Agent</b>	Graphite/Aluminum	Copper/Graphite	Nickel/Graphite
<b>Torque Coefficient*</b>	0.18	0.16	0.13
<b>Temperature Range</b>	-20°F to 1600°F (-29°C to 870°C)	-20°F to 1800°F (-29°C to 982°C)	-20°F to 2400°F (-29°C to 1315°C)
<b>Metal-Free</b>	No	No	No

## Product Description

### LOCTITE® Silver Grade Anti-Seize

Heavy-duty, temperature resistant, petroleum-based lubricant compound fortified with graphite and metallic flake. Inert and will not evaporate or harden in extreme cold or heat. For use in assemblies up to 1600°F (871°C).

#### CFIA Listed.

P/N	Package Size
38181	7 g pouch
80209	4 oz. brush-top can
76732	8 oz. brush-top can
76759	12 oz. net wt. aerosol
76764	1 lb. brush-top can
80206	1 gallon can
76775	5 gallon pail
37230	20 g (stick)

### LOCTITE® C5-A® Copper Anti-Seize Lubricant

Exclusive formula suspends copper and graphite in a high quality grease. Protects metal parts from rust, corrosion, galling and seizing at temperatures to 1800°F (982°C).

#### CFIA Listed Stick.

P/N	Package Size
51299	2 g pouch
51277	7 g pouch
51001	1 oz. tube
51002	4 oz. tube
51144	4 oz. brush-top can
51147	8 oz. brush-top can
51005	10 oz. brush-top can
1786073	12 oz. net wt. aerosol
51004	13 oz. cartridge
51006	1 lb. can
51007	1 lb. brush-top can
39643	1 lb. brush-top metal can
51008	2.5 lb. can
51009	8 lb. can
38584	25 lb. pail
51011	42 lb. pail
51146	425 lb. drum
37229	20 g (stick)

### LOCTITE® Nickel Anti-Seize

Copper-free. Recommended for stainless steel and other metal fittings. For preventing corrosion, seizing and galling in harsh chemical environments and temperatures to 2400°F (1315°C).

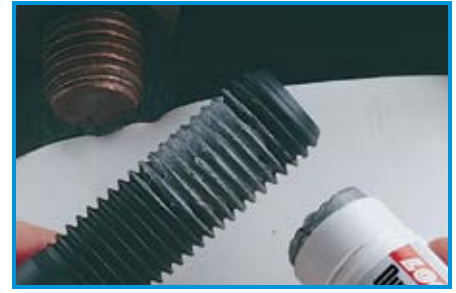
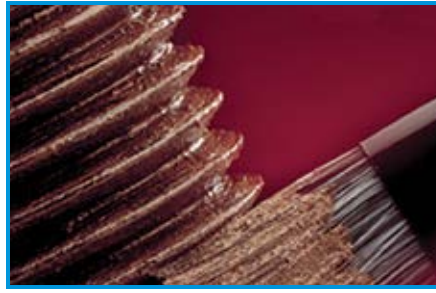
P/N	Package Size
77124	8 oz. brush-top can
1852753	12 oz. net wt. aerosol
51102	1 lb. can
77164	1 lb. brush-top can
51152	8 lb. can
77175	5 gallon pail




### ANTI-SEIZE IS OFTEN...

- Used as a gasket release agent in instances where reuse of the gasket is desirable
- Recommended for use on spark plug threads and electrical connections

HELPFUL HINTS

\* K value on steel nuts and bolts.



Stainless Steel and Titanium Applications	Soft Metal Applications	Incidental Food Contact	Water-Resistant
Available in a Paste or Semisolid Stick			
 <b>Heavy Duty Anti-Seize</b>	<b>Zinc Anti-Seize</b>	 <b>Food Grade Anti-Seize</b>	 <b>Marine Grade Anti-Seize</b>
Grey	Grey	White	Black
Graphite/Calcium Fluoride	Zinc	White Lubricating Solids	Calcium Sulfonate
0.16	0.15	0.13	0.18
-20°F to 2400°F (-29°C to 1315°C)	-20°F to 750°F (-29°C to 399°C)	-20°F to 750°F (-29°C to 399°C)	-20°F to 2400°F (-29°C to 1315°C)
Yes	No	Yes	Yes

**LOCTITE® Heavy Duty Anti-Seize**

**Metal-Free**

Excellent lubricity. Provides outstanding lubrication to all metals including stainless steel, aluminum and soft metals up to 2400°F (1315°C).

**CFIA Listed.**

**P/N Package Size**

- 51609 1 oz. tube
- 51605 9 oz. brush-top can
- 51606 18 oz. brush-top can
- 51607 2.3 lb. can
- 51608 45 lb. pail
- 41205 20 g (stick)

**LOCTITE® Zinc Anti-Seize**

Protects aluminum and ferrous surfaces from seizure and corrosion up to 750°F (399°C).

**P/N Package Size**

- 39901 1 lb. can

**LOCTITE® Food Grade Anti-Seize**

**Metal-Free**

Prevents seizure, galling and friction in stainless steel and other metal parts up to 750°F (399°C).

**NSF H1 rated for incidental food contact. CFIA Listed.**

**P/N Package Size**

- 1167237 8 oz. brush-top can
- 1169241 2 lb. can
- 1170163 40 lb. pail

**LOCTITE® Marine Grade Anti-Seize**

Formulated to protect assemblies exposed directly or indirectly to fresh water and salt water, this anti-seize works especially well in high humidity conditions. It has excellent lubricity, superior water wash-out spray resistance and prevents galvanic corrosion.

**ABS Approved.**

**P/N Package Size**

- 34395 8 oz. brush-top can
- 34026 16 oz. brush-top can

# Anti-Seize



## LOCTITE® Anti-Seize Properties Chart

	LOCTITE® PRODUCT	ITEM NUMBER	PACKAGE TYPE/SIZE	TEMPERATURE RESISTANCE	COLOR	K VALUE*	
GENERAL-PURPOSE	<b>C5-A® COPPER ANTI-SEIZE LUBRICANT</b>	51299 51277 51001 51002 51144 51147 51005 1786073 51004 51006 51007 39643 51008 51009 38584 51011 51146	2 g pouch 7 g pouch 1 oz. tube 4 oz. tube 4 oz. brush-top can 8 oz. brush-top can 10 oz. brush-top can 12 oz. net wt. aerosol 13 oz. cartridge 1 lb. can 1 lb. brush-top can 1 lb. brush-top metal can 2.5 lb. can 8 lb. can 25 lb. pail 42 lb. pail 425 lb. drum	1800°F (982°C)	Copper	0.16	
	<b>C5-A® COPPER ANTI-SEIZE</b>	37229	20 g stick				
	<b>SILVER GRADE ANTI-SEIZE</b>	38181 80209 76732 76759 76764 80206 76775	7 g pouch 4 oz. brush-top can 8 oz. brush-top can 12 oz. net wt. aerosol 1 lb. brush-top can 1 gallon can 5 gallon pail	1600°F (871°C)	Silver	0.18	
	<b>SILVER GRADE ANTI-SEIZE</b>	37230	20 g stick				
	<b>NICKEL ANTI-SEIZE</b>	77124 1852753 51102 77164 51152 77175	8 oz. brush-top can 12 oz. net wt. aerosol 1 lb. can 1 lb. brush-top can 8 lb. can 5 gallon pail	2400°F (1315°C)	Silver	0.13	
	HIGH PERFORMANCE	<b>HEAVY DUTY ANTI-SEIZE</b>	51609 51605 51606 51607 51608	1 oz. tube 9 oz. brush-top can 18 oz. brush-top can 2.3 lb. can 45 lb. pail	2400°F (1315°C)	Grey	0.16
		<b>HEAVY DUTY ANTI-SEIZE</b>	41205	20 g stick			
		<b>MARINE GRADE ANTI-SEIZE</b>	34395 34026	8 oz. brush-top can 16 oz. brush-top can	2400°F (1315°C)	Black	0.18
		<b>WHITE HI-TEMP ANTI-SEIZE</b>	34517 34518	8 oz. brush-top can 16 oz. brush-top can	2000°F (1093°C)	White	0.16
	SPECIALTY	<b>FOOD GRADE ANTI-SEIZE</b>	1167237 1169241 1170163	8 oz. brush-top can 2 lb. can 40 lb. pail	750°F (400°C)	White	0.13
<b>GRAPHITE-50™ ANTI-SEIZE</b>		51084	1 lb. can	900°F (482°C)	Black	0.13	
<b>MOLY PASTE</b>		1852755 51048 51049 51145	12 oz. net wt. aerosol 8 oz. brush-top can 1 lb. brush-top can 15 lb. can	750°F (400°C)	Black	0.11	
<b>MOLY-50™ ANTI-SEIZE</b>		51094	1 lb. can	750°F (400°C)	Black	0.13	
<b>ZINC ANTI-SEIZE</b>		39901	1 lb. can	750°F (400°C)	Grey	0.15	
HIGH PURITY	<b>N-7000™ HIGH PURITY ANTI-SEIZE</b>	51272 51270 51273	8 oz. brush-top can 1 lb. brush-top can 2 lb. can	2400°F (1315°C)	Silver	0.16	
	<b>N-5000™ HIGH PURITY ANTI-SEIZE</b>	51346 51243 51269 51246 51245	1 oz. tube 8 oz. brush-top can 1 lb. brush-top can 2 lb. can 8 lb. can	2400°F (1315°C)	Silver	0.15	
	<b>HIGH PERFORMANCE N-5000™ HIGH PURITY ANTI-SEIZE</b>	51572	1 lb. brush-top can	2400°F (1315°C)	Silver	0.15	
	<b>N-1000™ HIGH PURITY ANTI-SEIZE</b>	51115 51116 51117	8 oz. brush-top can 1 lb. can 2 lb. can	1800°F (982°C)	Copper	0.17	

ITEMS IN RED = Source's PICK or NEW

\* See K Value on next page.

## LOCTITE® INDUSTRIAL HAND WIPES

Clean hands anywhere! Quick and easy to use – no rinsing, drying or residue. Each 9 ½ in. x 12 in. towel is premoistened with powerful citrus-scented cleaning formula. Towels are abrasive enough to scrub off the toughest grease and grime.



Item # 34943 75 count  
34944 130 count

ADDITIONAL RESOURCES

## LOCTITE® Anti-Seize Applications Chart

	LOCTITE® PRODUCT	MAXIMUM ANTI-SEIZE PROPERTIES	FOR MAXIMUM LUBRICITY	FOR LOW SPEEDS, HIGH LOADS	EXTREME HIGH TEMPERATURE RESISTANCE (TO 2000°F-2400°F)	EXTREME CHEMICAL RESISTANCE	ELECTRICALLY CONDUCTIVE	FOR ALUMINUM/ SOFT METALS	FOR STAINLESS STEEL	METAL-FREE FORMULATION	COPPER-FREE FORMULATION	KEY SPECIFICATIONS & AGENCY APPROVALS
GENERAL-PURPOSE	<b>C5-A° COPPER ANTI-SEIZE LUBRICANT</b>	△					△	△	△			CFIA Listed (stick)
	SILVER GRADE ANTI-SEIZE	△					△	△	△			CFIA Listed
	NICKEL ANTI-SEIZE	△			▲	▲	△		△		▲	N/A
HIGH PERFORMANCE	<b>HEAVY DUTY ANTI-SEIZE</b>	▲			▲	△	△	△	▲	▲	▲	N/A
	MARINE GRADE ANTI-SEIZE	▲			▲			△	▲	▲	▲	ABS
	WHITE HI-TEMP ANTI-SEIZE	△			▲			△	△	▲	▲	N/A
SPECIALTY	<b>FOOD GRADE ANTI-SEIZE</b>	■						△	▲	▲	▲	NSF H1, CFIA Listed
	GRAPHITE-50™ ANTI-SEIZE	■				△	▲	△		▲	▲	N/A
	<b>MOLY PASTE</b>	■	▲	▲					▲	▲	▲	N/A
	MOLY-50™ ANTI-SEIZE	■	△	△					▲	▲	▲	N/A
	ZINC ANTI-SEIZE	■					■	▲	△			N/A
HIGH PURITY	<b>N-7000™ HIGH PURITY ANTI-SEIZE</b>	▲			▲	△	△		△	▲	▲	N/A
	N-5000™ HIGH PURITY ANTI-SEIZE	△			▲	▲	△		△		▲	N/A
	HIGH PERFORMANCE N-5000™ HIGH PURITY ANTI-SEIZE	▲	▲		▲	▲	△		△		▲	N/A
	N-1000™ HIGH PURITY ANTI-SEIZE	△					△		△			N/A

ITEMS IN RED = Source's PICK or NEW

△ Good Choice ▲ Preferred Choice

■ Acceptable Choice

## TORQUE GUIDE

Proper clamp load is an essential part of any bolted assembly for trouble-free operations. Torquing either nut or bolt creates the clamp load. An anti-seize lubricant used on a bolt helps to develop greater clamp load for the same torque compared to a non-lubricated bolt. An additional benefit is greater uniformity in clamp load among a series of bolts. The relationship between torque and clamp load is expressed in the following equation:  $T = KFD$ .

Where:

T = Torque (in.-lb., ft.-lb., N-m)

F = Clamp Load (lb., N)

D = Nominal diameter of bolt (in., ft., m)

K = Torque coefficient or nut factor, determined experimentally

**K Factors:** K factors are obtained on Grade 8, ½ in. steel bolts and grade 5 nuts by a test procedure that measures torque tension properties. Lubricant was applied to the bolt threads and both faces of the washer.

See the Properties Chart for the torque coefficient or K value for the anti-seize compounds.

Henkel Corporation believes that this data fairly represents performance to be expected. However, Henkel makes no warranty of specific performance on any individual fastener. In critical applications, it is necessary to determine K values independently.

PLEASE NOTE: There are two "coefficients" used to express the relationship between torque and tension: torque coefficient (also called "nut factor") is the most commonly used. A different concept is the "friction coefficient," which has a value of 2/3 (or 67%) of the torque coefficient.

ADDITIONAL RESOURCES

# Lubricants



## Your Application

- Temperature resistant
- Thermal stability
- Penetrate and free corroded assemblies

## HIGH PERFORMANCE LUBRICATION

### Dry Film Lubricant

### Aerosol

## Solution

### Moly Dry Film Lubricant

### Krytox® RFE Advanced PTFE Dry Lubricant

### ViperLube® High Performance Synthetic Grease

	Moly Dry Film Lubricant	Krytox® RFE Advanced PTFE Dry Lubricant	ViperLube® High Performance Synthetic Grease
<b>Base Oil</b>	Molybdenum Disulfide	PTFE†	PAO‡
<b>Viscosity</b>	N/A	N/A	N/A
<b>Temperature Range</b>	-20°F to 750°F (-29°C to 398°C)	-15°F to 500°F (-26°C to 260°C)	-40°F to 500°F* (-40°C to 260°C)
<b>Four Ball Wear Test (mm) (ASTM D-2266)</b>	N/A	N/A	N/A
<b>Food Grade</b>	N/A	N/A	NSF H1

## Product Description

### LOCTITE® Moly Dry Film Lubricant

Solid film lubricant for sliding surfaces and slow-moving parts. Temperature resistant up to 750°F (399°C) as a dry film lubricant, 2400°F (1315°C) as an anti-seize. Won't squeeze out, burn off, or pick up dirt.

P/N	Package Size
1786074	12 oz. net wt. aerosol
39896	1.3 lb. can
39897	10 lb. can

### LOCTITE® Krytox® RFE Advanced PTFE Dry Lubricant

High performance, synthetic lubricant designed to provide long-lasting lubrication for parts that require a dry, thin lubricating film. Krytox® RFE Advanced PTFE Dry Lubricant provides excellent lubrication properties over a broad temperature range.

P/N	Package Size
30138	8 oz. net wt. aerosol

### LOCTITE® ViperLube® High Performance Synthetic Grease

NLGI Grade 2/Severe Duty GC-LB Grease provides protection against equipment exposed to a wide range of temperatures. Use as a lubricant and protective anti-rust film on bearings and machine parts, or as a release agent on gaskets and seals. **NSF H1 rated for incidental food contact.**

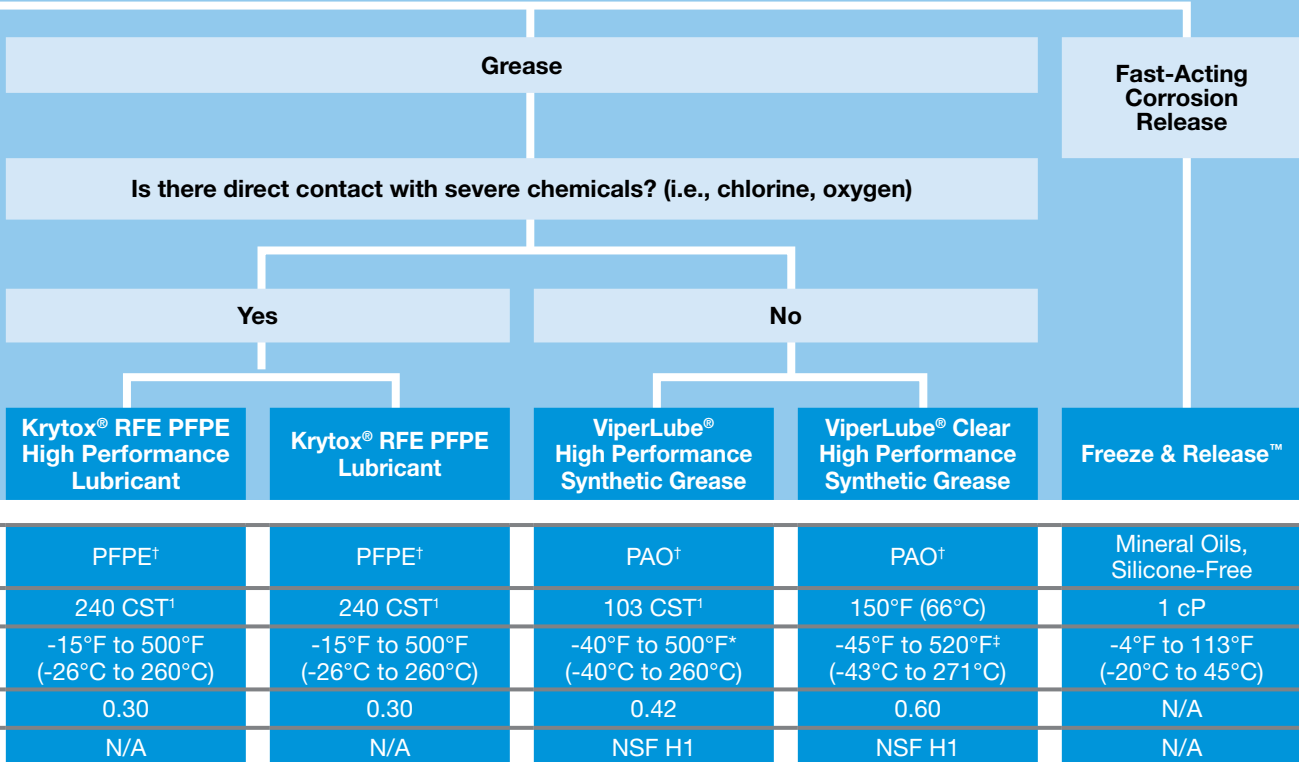
P/N	Package Size
1906102	10.1 oz. net wt. aerosol

† PTFE = PolyTetraFluoroEthylene, PFPE = PerFluoroPolyEther, PAO = PolyAlphaOlefin.

\* 400°F (204°C) – Continuous, 500°F (260°C) – Intermittent.

‡ 420°F (216°C) – Continuous, 520°F (271°C) – Intermittent.

1 CST at 104°F (40°C).



**LOCTITE® Krytox® RFE PFPE High Performance Lubricant**

High performance synthetic grease provides long-lasting lubrication for all types of moving and/or sliding parts. Compatible with all plastics, elastomers and metals. Nonflammable, chemically resistant and oxygen compatible.

P/N	Package Size
29711	2 oz. tube
29709	16 oz. cartridge

**LOCTITE® Krytox® RFE PFPE Lubricant**

Synthetic grease formulated specifically for severe environments. Great for lubricating O-rings. Excellent lubrication properties over a broad temperature range and in chlorine processing. **NLGI Grade 2 grease.**

P/N	Package Size
29710	2 oz. tube
31361	16 oz. cartridge

**LOCTITE® ViperLube® High Performance Synthetic Grease**

NLGI Grade 2/Severe Duty GC-LB Grease provides protection against equipment exposed to a wide range of temperatures. Use as a lubricant and protective anti-rust film on bearings and machine parts, or as a release agent on gaskets and seals. **NSF H1 rated for incidental food contact. CFIA Listed.**

P/N	Package Size
36780	1 cc tube
36781	3 oz. tube
36782	14 oz. cartridge
36783	400 g can
36784	0.42 oz. tube
37061	30 lb. pail
37710	120 lb. drum

**LOCTITE® ViperLube® Clear High Performance Synthetic Grease**

Lasts four times longer than petroleum-based lubricants. Withstands temperatures up to 420°F (520°F intermittent). Contains PTFE for added protection against friction and wear. Nonflammable. Contains no ODCs. Clear in color. **NLGI Grade 2 grease. NSF H1 rated for incidental food contact. CFIA Listed.**

P/N	Package Size
39341	3 oz. tube
39342	400 g cartridge

**LOCTITE® Freeze & Release™ Fast-Acting Corrosion Release**

The solution for releasing seized or corroded parts. Instantly freezes and rusted parts (bolts, nuts, studs) down to -38°F (-39°C). The shock-freeze causes microscopic cracks in the layer of rust, allowing the lubricating ingredient to wick directly into the rust. Dismantle parts in 1 to 2 minutes.

P/N	Package Size
996456	13.52 oz. net wt. aerosol



# Lubricants



## LOCTITE® ViperLube® Synthetic Lubricant Properties Chart

LOCTITE® PRODUCT	ITEM NUMBER	PACKAGE TYPE/SIZE	TEMPERATURE RESISTANCE	TYPE OF LUBRICANT	VISCOSITY RANGE	POUR POINT (ASTM D 97)	FOUR BALL TEST	NLGI RATING	DROP POINT	SPRAY TEST (ASTM B111)	AGENCY APPROVALS
SYNTHETIC / HIGH PERFORMANCE	VIPERLUBE® HIGH PERFORMANCE SYNTHETIC GREASE	36780 1 cc tube 36781 3 oz. tube 36782 14 oz. cartridge 36783 400 g can 36784 0.42 oz. tube 1906102 10.1 oz. net wt. aerosol 37061 30 lb. pail 37710 120 lb. drum	400°F (204°C) continuous 500°F (260°C) intermittent	Synthetic hydrocarbon (polyalphaolefin-based)	240 CST	N/A	0.45 mm (ASTM D 2266)	2	500°F (260°C) (ASTM D 556)	Pass	NSF H1, CFIA Listed
	VIPERLUBE® CLEAR HIGH PERFORMANCE SYNTHETIC GREASE	39341 3 oz. tube 39342 400 g cartridge	420°F (216°C) continuous 520°F (271°C) intermittent	Synthetic hydrocarbon (polyalphaolefin-based)	N/A	N/A	0-60 mm (ASTM D 2266)	2	<590°F (<310°C) (ASTM D 2265)	N/A	NSF H1, CFIA Listed

## Grease Compatibility Chart

THICKENER TYPE	CALCIUM SULFONATE VIPERLUBE®	SILICA GEL VIPERLUBE® CLEAR	LITHIUM SOAP	LITHIUM COMPLEX	ALUMINUM COMPLEX	CALCIUM COMPLEX	BARIUM SOAP	SODIUM SOAP	BENTONE	POLYUREA
CALCIUM SULFONATE VIPERLUBE®		SC	FC	FC	NC	FC	SC	NC	NC	NC
SILICA GEL VIPERLUBE® CLEAR	SC		FC	FC	FC	NC	FC	NC	FC	NA
LITHIUM SOAP	FC	FC		FC	NC	FC	SC	NC	NC	SC
LITHIUM COMPLEX	FC	FC	FC		NC	FC	SC	NC	NC	SC
ALUMINUM COMPLEX	NC	FC	NC	NC		NC	NC	SC	NC	NC
CALCIUM COMPLEX	FC	NC	FC	FC	NC		SC	NC	NC	SC
BARIUM SOAP	SC	FC	SC	SC	NC	SC		NC	NC	NA
SODIUM SOAP	NC	NC	NC	NC	SC	NC	NC		NC	NC
BENTONE	NC	FC	NC	NC	NC	NC	NC	NC		NC
POLYUREA	NC	NA	SC	SC	NC	SC	NA	NC	NC	

FC = Fully Compatible

NC = Not Compatible (Mixtures soften severely and do not remain grease-like.)

SC = Somewhat Compatible (Mixtures soften but remain grease-like.)

NA = Not Available

## Krytox® RFE Lubricant Properties Chart

LOCTITE® PRODUCT	ITEM NUMBER	PACKAGE TYPE/SIZE	TEMPERATURE RESISTANCE	NON-FLAMMABLE	HIGH LOAD CAPACITY	CORROSION INHIBITORS	COMPATIBLE WITH ALL PLASTICS, METALS & ELASTOMERS	CHEMICALLY RESISTANT	OXYGEN COMPATIBLE*	THERMALLY STABLE	WATER/STREAM RESISTANT	NLGI GRADE
SPECIALTY OILS AND LUBRICANTS	KRYTOX® RFE PFPE LUBRICANT (O-RING)	29710 2 oz. tube 31361 16 oz. cartridge	-15°F to 500°F (-26°C to 260°C)	•	•		•	•	•	•	•	2
	KRYTOX® RFE PFPE HIGH PERFORMANCE LUBRICANT	29711 2 oz. tube 29709 16 oz. cartridge	-15°F to 500°F (-26°C to 260°C)		•	•	All plastics and metals	•	•	•	•	2
	KRYTOX® RFE ADVANCED PTFE DRY LUBRICANT	30138 8 oz. net wt. aerosol	-15°F to 500°F (-26°C to 260°C)	Once film is dry			•	•		•	Water-repellent	N/A

\* Per BAM 8104-411 & MSFC 106B under specific conditions. Test the proposed application thoroughly before use.

- Dry film lubricants are an ideal choice for “unclean” environments where there is potential for dirt and other contaminants to come in contact with the product. Contaminants will not stick like they would with a standard grease.

HELPFUL HINTS

# LOCTITE® Lubricant Applications Chart

	LOCTITE® PRODUCT	ITEM NUMBER	PACKAGE TYPE/SIZE	TEMPERATURE RESISTANCE	FOOD PROCESSING EQUIPMENT	CLOSE-FITTING PARTS	HIGH TEMP	DIELECTRIC COMPOUND	ELECTRICAL EQUIPMENT	GEAR, BEARINGS, CABLE & CONVEYORS	HYDRAULIC UNITS (NOT BRAKES)	FOR HIGH SPEED BEARINGS	FOR LOW SPEEDS & HIGH LOADS	CHAIN-DRIVEN EQUIPMENT	SOLID FILM
SYNTHETIC / HIGH PERFORMANCE	VIPERLUBE® HIGH PERFORMANCE SYNTHETIC GREASE	36780 36781 36782 36783 36784 1906102 37061 37710	1 cc tube 3 oz. tube 14 oz. cartridge 400 g can 0.42 oz. tube 10.1 oz. net wt. aerosol 30 lb. pail 120 lb. drum	400°F (204°C) continuous 500°F (260°C) intermittent	▲	▲	▲	■		▲		▲	▲	▲	
	VIPERLUBE® CLEAR HIGH PERFORMANCE SYNTHETIC GREASE	39341 39342	3 oz. tube 400 g cartridge	420°F (216°C) continuous 520°F (271°C) intermittent	▲		▲		▲	▲		▲	▲	▲	
SPECIALTY OILS & LUBRICANTS	GEAR, CHAIN & CABLE LUBRICANT	1906177	12 oz. net wt. aerosol	250°F (121°C)						▲				▲	
	SILICONE LUBRICANT	51360 81246	5.3 oz. tube 13 oz. net wt. aerosol	400°F (204°C)	▲		■			△				△	
	MOLY DRY FILM LUBRICANT	1786074 39896 39897	12 oz. net wt. aerosol 1.3 lb. can 10 lb. can	750°F (400°C)			△	△	▲				△	▲	▲
	SOLVO-RUST® SUPER PENETRATING OIL	1865406	12.25 oz. net wt. aerosol	250°F (121°C)		△									
	C-200® HIGH TEMPERATURE SOLID FILM LUBRICANT (FOR UNCLEAN ENVIRONMENTS)	39893 39894	1.3 lb. can 10 lb. can	2400°F (1315°C)			▲	△					△		▲
	PENETRATING OIL	51221	12 oz. net wt. aerosol	100°F (38°C)		△									
	FREEZE & RELEASE™	996456	13.52 oz. net wt. aerosol	N/A		△									
PETROLEUM-BASED GREASES	WHITE LITHIUM GREASE	30530 1906122	1.5 oz. tube 10.75 oz. net wt. aerosol	380°F (193°C) (dropping point)						△			▲	△	
	DIELECTRIC GREASE	30536 37535	0.33 oz. tube 3 oz. tube	400°F (204°C)			■	■							
	EXTREME PRESSURE GREASE	51242	14.5 oz. cartridge	450°F (232°C)			■					▲	▲		
	FOOD GRADE GREASE	51252	14.5 oz. cartridge	450°F (232°C)	▲		■					▲			

△ Good Choice    ▲ Preferred Choice    ■ Acceptable Choice

## CARTRIDGE ACCESSORIES

Go to [page 177](#) to see LOCTITE® branded cartridge accessories as well as other LOCTITE® Branded Consumables.

Can't find what you're looking for? Visit [www.equipment.loctite.com](http://www.equipment.loctite.com) or call 1-800-LOCTITE (562-8483).

**STRAIGHT FROM** *The Source*