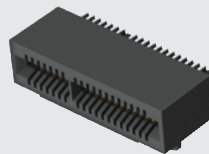
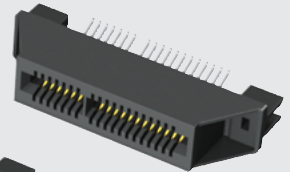
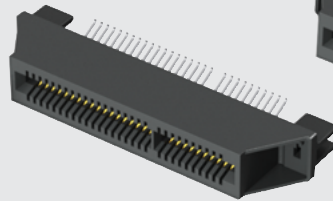


MEC1-130-02-L-D-EM2



MEC1-120-02-L-D-RA1-SL



MEC1-120-02-F-D-EM2

MEC1-RA, MEC1-EM SERIES

(1,00 mm) .0394"

RIGHT ANGLE/EDGE MOUNT SOCKETS

SPECIFICATIONS

For complete specifications and recommended PCB layouts see www.samtec.com?MEC1-RA

Insulator Material: Black LCP

Contact Material: Phosphor Bronze

Plating: Au or Sn over 50µ" (1,27 µm) Ni

Current Rating: 1.6 A per pin

(2 adjacent pins powered)

Operating Temp Range: -55°C to +125°C

Insertion Depth: (5,84 mm) .230" to (8,13 mm) .320"

RoHS Compliant: Yes

Processing: Lead-Free Solderable: Yes

SMT Lead Coplanarity: (0,10 mm) .004" max (05-40)

(0,15 mm) .006" max (50-70)

RECOGNITIONS

For complete scope of recognitions see www.samtec.com/quality



MEC1 - **1** POSITIONS PER ROW - **CARD SLOT** - **PLATING OPTION** - **D** - **RA1** - **NP** - **SL**

Mates with:
(1,60 mm)
.062" card

05, 08, 20, 30,
40, 50, 60, 70

-02
= (1,60 mm)
.062" thick card

-F
= Gold flash on contact,
Matte Tin on tail

-L
= 10µ" (0,25 µm)
Gold on contact,
Matte Tin on tail

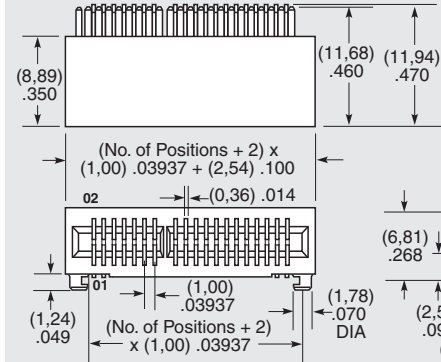
POSITIONS PER ROW	POLARIZED POSITIONS
05	3, 4
08	5, 6
20	15, 16
30	21, 22
40	31, 32
50	41, 42
60	31, 32, 63 & 64
70	53, 54, 115 & 116

-NP
= No Polarization
(8 positions only)
Leave Blank for polarization

ALSO AVAILABLE
(MOQ Required)

- Elevated body height
 - Other platings
- Contact Samtec.

Note: While optimized for 50Ω applications, this connector with alternative signal/ground patterns may also perform well in certain 75Ω applications. Contact Samtec for further information.



Note: Some sizes, styles and options are non-standard, non-returnable.

APPLICATION

Samtec recommends that pads on the mating board be Gold plated.

MEC1-RA 6,81 mm Stack Height	Rated @ 3dB Insertion Loss*
Single-Ended Signaling	4.5 GHz / 9 Gbps
Differential Pair Signaling	5.5 GHz / 11 Gbps

*Performance data includes effects of a non-optimized PCB. Complete test data available at www.samtec.com?MEC1-RA or contact sig@samtec.com

SPECIFICATIONS

For complete specifications and recommended PCB layouts see www.samtec.com?MEC1-EM

Insulator Material: Black LCP

Contact Material: Phosphor Bronze

Plating: Au or Sn over 50µ" (1,27 µm) Ni

Current Rating: 1.8 A per pin

(2 adjacent pins powered)

Operating Temp Range: -55°C to +125°C

Insertion Depth: (5,84 mm) .230" to (8,13 mm) .320"

RoHS Compliant: Yes

Lead-Free Solderable: Yes

RECOGNITIONS

For complete scope of recognitions see www.samtec.com/quality



MEC1 - **1** POSITIONS PER ROW - **02** - **PLATING OPTION** - **D** - **EM2** - **NP**

Mates with:
(1,60 mm)
.062" card

05, 08, 20, 30,
40, 50, 60, 70

-F
= Gold flash on contact,
Matte Tin on tail

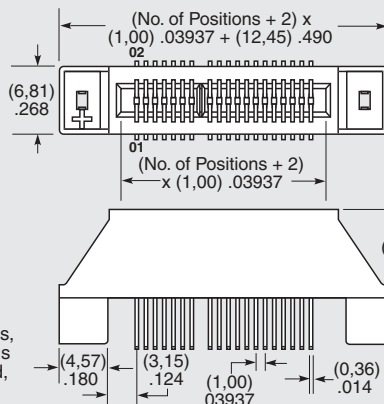
-L
= 10µ" (0,25 µm) Gold on contact,
Matte Tin on tail

-NP
= No Polarization
(8 positions only)
Leave Blank for polarization

ALSO AVAILABLE
(MOQ Required)

- Edge mount leads for (0,80 mm) .031" thick board
 - Other platings
- Contact Samtec.

Note: While optimized for 50Ω applications, this connector with alternative signal/ground patterns may also perform well in certain 75Ω applications. Contact Samtec for further information.



Note: Some sizes, styles and options are non-standard, non-returnable.

POSITIONS PER ROW	POLARIZED POSITIONS
05	3, 4
08	5, 6
20	15, 16
30	21, 22
40	31, 32
50	41, 42
60	31, 32, 63 & 64
70	53, 54, 115 & 116