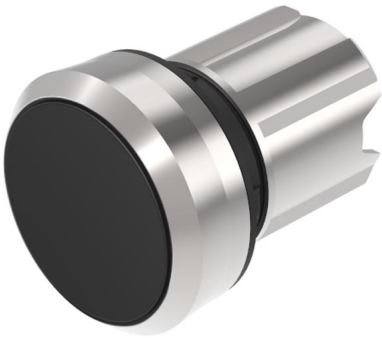


# EAO – Your Expert Partner for Human Machine Interfaces

45-2134.2110.000 - Pushbutton actuator, Maintain

## 45-2134.2110.000 - Pushbutton actuator, Maintain



*Attention: The preview is based on a sample product. This can differ from your current configuration.*

### Mounting

Design raised  
Mounting cut-out Ø 22.5 mm

### Front

Front shape round  
Front dimension Ø 29.45 mm  
Front ring material Metal  
Front ring colour silver

### Other Attributes

Weight 0.048 kg

### Operating-/Indication part

Lens optics opaque  
Lens material Plastic  
Lens colour black  
Lens profile flat / level with front ring

### IP-Rating

Front protection IP66, IP67, IP69K

### Actuator

Switching action Maintained  
Housing material Metal

### Switching element

6

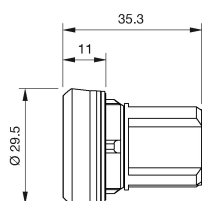
### Function

Pushbutton

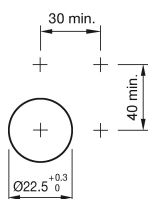
# EAO – Your Expert Partner for Human Machine Interfaces

45-2134.2110.000 - Pushbutton actuator, Maintain

## Dimensions



## Mounting cut-outs



## Wiring diagram



## Additional information

Push to unlatch

## Legend

Switching action: C = Maintained