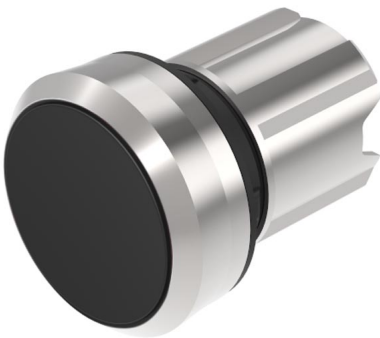


# EAO – Your Expert Partner for Human Machine Interfaces

## 45-2131.2110.000 - Pushbutton actuator, Momentary

### 45-2131.2110.000 - Pushbutton actuator, Momentary



*Attention: The preview is based on a sample product. This can differ from your current configuration.*

#### Mounting

Design	raised
Mounting cut-out	Ø 22.5 mm

#### Front

Front shape	round
Front dimension	Ø 29.45 mm
Front ring material	Metal
Front ring colour	silver

#### Other Attributes

Weight	0.048 kg
--------	----------

#### Operating-/Indication part

Lens optics	opaque
Lens material	Plastic
Lens colour	black
Lens profile	flat / level with front ring

#### IP-Rating

Front protection	IP66, IP67, IP69K
------------------	-------------------

#### Actuator

Switching action	Momentary
Housing material	Metal

#### Switching element

6

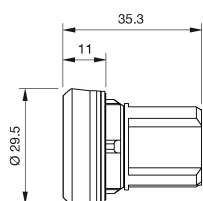
#### Function

Pushbutton

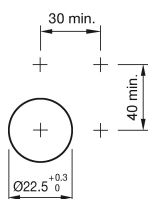
# EAO – Your Expert Partner for Human Machine Interfaces

45-2131.2110.000 - Pushbutton actuator, Momentary

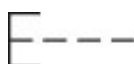
## Dimensions



## Mounting cut-outs



## Wiring diagram



## Legend

Switching action: B = Momentary