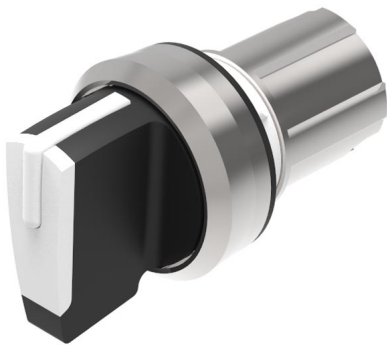


# EAO – Your Expert Partner for Human Machine Interfaces

## 45-2828.2C90.001 - Selector switch actuator 2 positions, short lever

### 45-2828.2C90.001 - Selector switch actuator 2 positions, short lever



Attention: The preview is based on a sample product. This can differ from your current configuration.

#### Mounting

Mounting cut-out  $\varnothing$  22.5 mm

#### Front

Front shape round  
Front dimension  $\varnothing$  29.45 mm  
Front ring material Metal shiny  
Front ring colour silver

#### Other Attributes

Weight 0.044 kg

#### Operating-/Indication part

Lever material Plastic  
Lever colour white  
Switching angle  $C = 90^\circ$

#### IP-Rating

Front protection IP66, IP67, IP69K

#### Actuator

Switching action Rest - Maintained  
Housing material Metal

#### Switching element

Rotary positions 2  
6

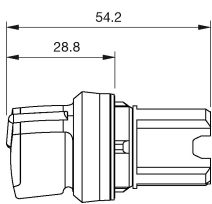
#### Function

Selector switch

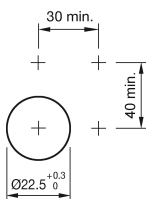
# EAO – Your Expert Partner for Human Machine Interfaces

45-2828.2C90.001 - Selector switch actuator 2 positions, short lever

## Dimensions



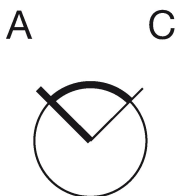
## Mounting cut-outs



## Wiring diagram



## Switching positions



## Additional information

External diameter of the short lever 32.3 mm

## Legend

Switching action: A = Rest, C = Maintained