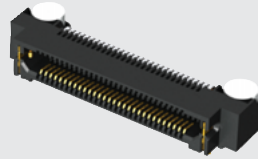
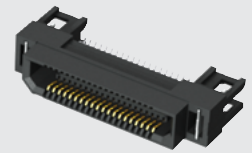




ERF8-030-01-L-D-RA-L-TR



ERF8-020-01-L-D-EM2-TR



(0,80 mm) .0315"

ERF8-RA, ERF8-EM SERIES

# RUGGED EDGE RATE® STRIPS

**ERF8-RA / ERF8-EM**  
Board Mates:  
ERM8

**ERF8-RA / ERF8-EM**  
Cable Mates:  
ERCD, ERDP

## SPECIFICATIONS

For complete specifications and recommended PCB layouts see [www.samtec.com?ERF8-RA](http://www.samtec.com?ERF8-RA) or [www.samtec.com?ERF8-EM](http://www.samtec.com?ERF8-EM)

**Insulator Material:**

Black LCP

**Contact Material:**

BeCu

**Plating:**

Au or Sn over  
50µ" (1,27 µm) Ni

**Current Rating:**

2.2 A per pin  
(1 pin powered per row)

**Operating Temp Range:**

-55°C to +125°C

**Voltage Rating (ERF8-RA):**

235 VAC max

**Voltage Rating (ERF8-EM):**

200 VAC max

**RoHS Compliant:**

Yes

**Processing:**

Lead-Free Solderable:

Yes

**SMT Lead Coplanarity (ERF8-RA):**

(0,10 mm) .004" max

**SMT Lead Coplanarity (ERF8-EM):**

(0,10 mm) .004" max (005-030)  
(0,12 mm) .005" max (040-075)

## RECOGNITIONS

For complete scope of recognitions see [www.samtec.com/quality](http://www.samtec.com/quality)



## ALSO AVAILABLE (MOQ Required)

- Other positions
  - Edge Mount option for (1,00 mm) .03937" thick PCB (ERF8-EM only)
  - Solder leads & weld tab for (2,36 mm) .093" thick PCB (ERF8-RA only)
  - Other platings
- Contact Samtec.

**Note:** Patented

**Note:** Some lengths, styles and options are non-standard, non-returnable.

