

MPPT SERIES

(5,00 mm) .1969"

HERMAPHRODITIC 30 A POWER SYSTEM

SPECIFICATIONS

For complete specifications see www.samtec.com?MPPT

Insulator Material:

Black LCP

Terminal Material:

Copper Alloy

Plating:

Sn or Au over 50µ" (1,27 µm) Ni

Operating Temp Range:

-55°C to +105°C with Tin;

-55°C to +125°C with Gold

Voltage Rating:

600 VAC/848 VDC

RoHS Compliant:

Yes

Lead-Free Solderable:

Yes

Mates with:

MPPT

MPPT/MPPT	
PINS	CURRENT RATING (PER CONTACT)
1	23.3 A
2	20.5 A
3	19.4 A
4	18.4 A
ALL	17.2 A

Dual leaf contacts



Screw down option

Dual blade post



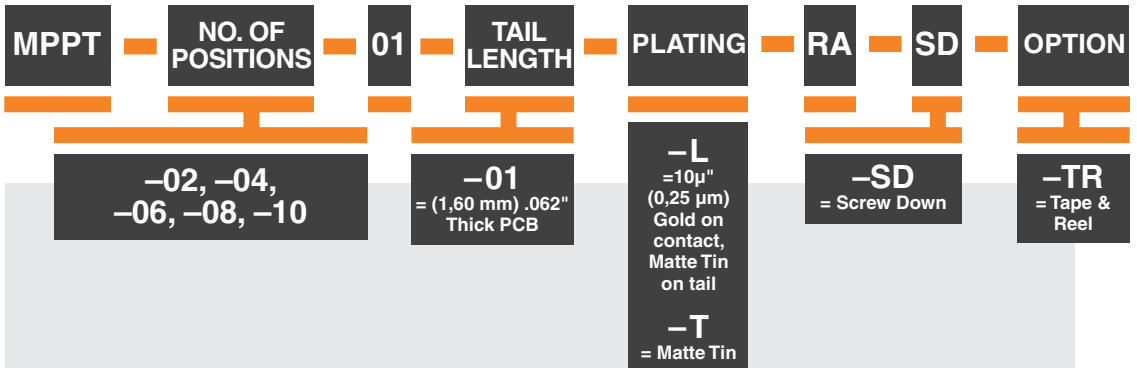
RECOGNITIONS

For complete scope of recognitions see www.samtec.com/quality

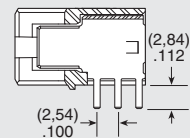
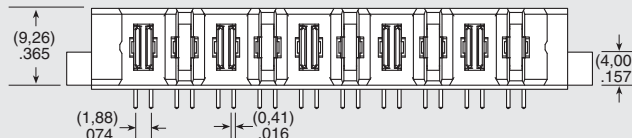
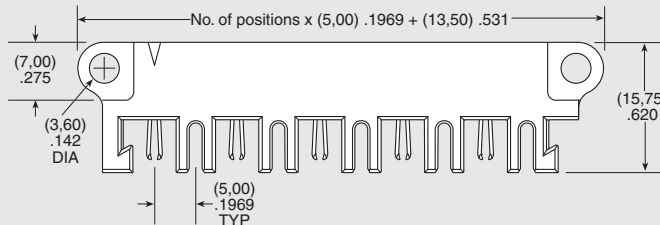
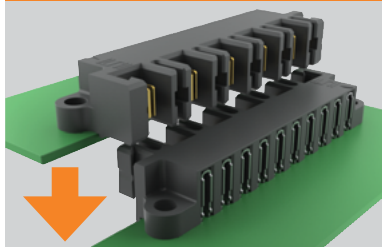


ALSO AVAILABLE (MOQ Required)

- Locking Clip (Manual placement required)
 - Solder Leads for (2,36 mm) .093" thick board
- Contact Samtec.



APPLICATION



Note: Some sizes, styles and options are non-standard, non-returnable.