

CCS Wireless - Ember ZigBee™ Edition



Development Kit Options			
Tools Included	w/Compiler	Hardware	Proto-Board*
Sku	S-85	53323-702	53212-685
Compiler Software	PCWH		
Programmer	●	●	
Prototyping board	●	●	●
Power supply & cables	●	●	
Exercise book	●	●	

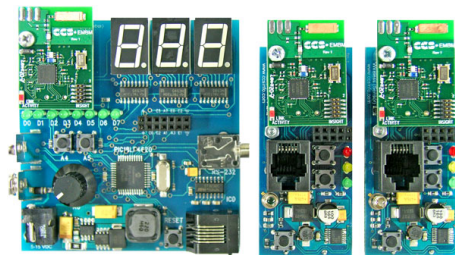
*Hardware only and proto-boards are intended for customers already owning a CCS compiler.

ZigBee™ For Both PIC16 and PIC18 Targets

The CCS Wireless - Ember ZigBee™ Edition Development Kit enables fast prototyping of ZigBee™ applications. This kit includes the powerful PCWH Integrated Development Environment with compiler support for Microchip's PIC® PIC10, PIC12, PIC16 and PIC18 families and an ICD-U64 in-circuit programmer/debugger that supports C-aware real time debugging. A base station board is provided along with two battery operated sensor boards, each with the EM260 module board installed. The kit features full communication protocols with the Ember-ZigBee™ stack using the powerful Ember EM260 chip.

CCS Wireless-Ember ZigBee™ Edition Prototyping Boards include:

- One base station board with PIC18LF4620 processor chip and EM260 module
(Size: 3.25" x 3")
- 10 I/O Pins (3 Can Be Analog) on Base Station
- Two sensor boards with PIC16F886 processor chips and EM260 modules
(Size: 2.75" x 1.25")
- 5 I/O Pins (1 Can Be Analog) on Sensor Boards
- Two 9V batteries



Features of the Ember EM260 module include:

- 2.4 Ghz IEEE 802.15.4 compliant transceiver
- 3.3V operation
- Insight Port for advanced network debugging with Insight Desktop
- Size: 1.375" x 1"
- SPI Interface

CCS Wireless - Ember ZigBee™ Edition Development Kit includes:

- Two Sensor Boards with **PIC16F886** processor chips and EM260 modules
- One Base Station Board with **PIC18LF4620** processor chip and EM260 module
- In-Circuit Debugger/Programmer
- Serial PC to Prototyping Board Cable
- Modular Cable (ICD to Prototyping Board)
- USB (or serial) PC to ICD Cable
- Exercise Tutorial and Ember Documentation
- 9V AC Adapters
- Two 9V Batteries