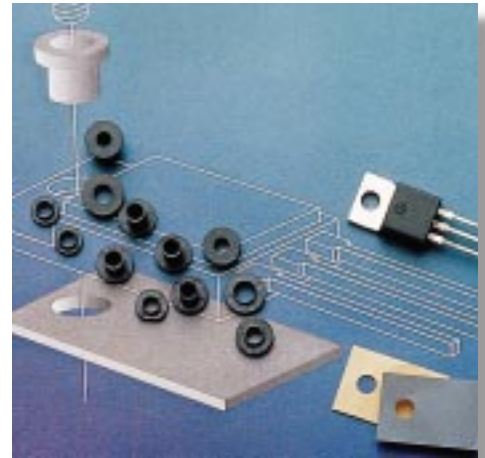
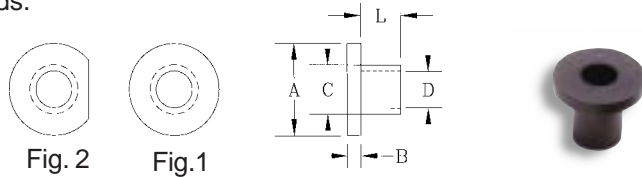


### High Temperature Machine Screw Insulators

- Use with TO-3, TO-3P, TO-66, TO-218, TO-220 & TO-247 Devices.
- 260° C maximum recommended service temperature.
- Chemically inert (no known solvents under 200° C).
- Recommended torque of 5 to 6 inch-pounds on all shoulder washers except SW-032-135 which has recommended torque of 4 inch-pounds.



**Color: Black**

PART NUMBER	L	A	B	C	D	SCREW SIZE	FIG.
SW-125-150	.125 (3.18)	.280 (7.11)	.042 (1.07)	.150 (3.81)	.112 (2.84)	4	1
SW-185-150	.185 (4.70)	.280 (7.11)	.042 (1.07)	.150 (3.81)	.112 (2.84)	4	1
SW-125-140	.125 (3.18)	.280 (7.11)	.042 (1.07)	.140 (3.56)	.112 (2.84)	4	1
SW-031-190	.031 (0.79)	.312 (7.92)	.047 (1.19)	.190 (4.83)	.146 (3.71)	6	1
SW-031-177	.031 (0.79)	.312 (7.92)	.047 (1.19)	.177 (4.50)	.144 (3.66)	6	1
SW-031-145	.031 (0.79)	.280 (7.11)	.047 (1.19)	.145 (3.68)	.118 (3.00)	4	1
SW-032-135	.032 (0.81)	.215 (5.46)	.040 (1.02)	.135 (3.43)	.116 (2.95)	4	1
SW-040-140	.040 (1.02)	.245 (6.22)	.040 (1.02)	.140 (3.56)	.119 (3.02)	4	2

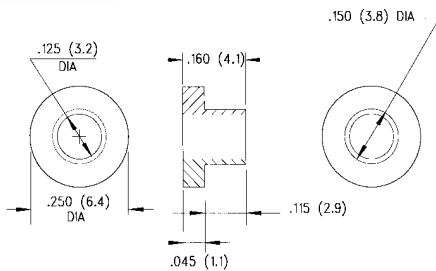
**Material Specifications:**  
40% Glass filled Polyphenylene Sulfide (PPS)  
U.L. Rated 94V-0



**Oxygen Rating Index:** Over 45%  
**Standard Drawing Tolerances,** unless otherwise indicated:  
Fractions: = ± 1/64 (.40)  
.X = ± 1/64 (.40) .XX = ± .010 (.254) .XXX = ± .005 (.127)

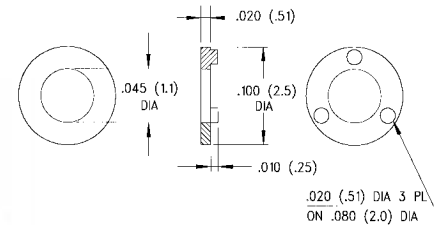
#### 405-160

PRICE CODE: A



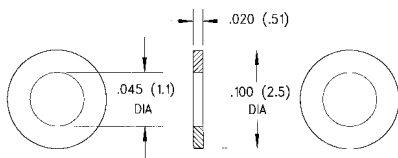
#### 413-030

PRICE CODE: A



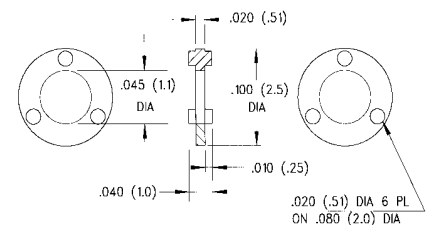
#### 412-020

PRICE CODE: A



#### 419-040

PRICE CODE: A



**Material Specifications:**  
White or Natural Nylon, per ASTM D 4066 PA 111, U.L. Rated 94V-2



**Oxygen Rating Index:** Over 28%  
**Standard Drawing Tolerances,** unless otherwise indicated:  
Fractions: = ± 1/64 (.40)  
.X = ± 1/64 (.40) .XX = ± .010 (.254) .XXX = ± .005 (.127)