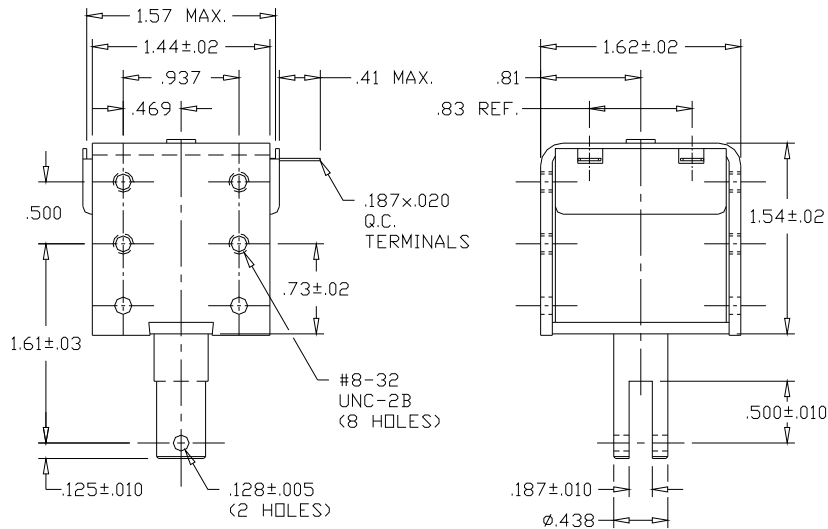


# Model 2 (AC)

Frame-Pull



**ISO 9001 / AS9100 Certified Company**  
 Woodstock, IL 60098 Ph. (815)334-3600 Fax (815)337-0377  
 Or visit us at our website [www.guardian-electric.com](http://www.guardian-electric.com)



Solenoid shown energized and fully seated.  
 Spring kits are available (consult factory).


Total Weight: 10 oz.  
 Plunger Weight: 1 oz.

Model No.	Part No.	Duty Cycle	Volts	Res. (Ω)	Power (VA)	Current, Seated (mA)
2-I-120A	A420-065507-00	*Intermittent	120	45	44	367
2-C-120A	A420-065506-00	Continuous	120	140	13	108
2-I-240A	A420-065509-00	*Intermittent	240	245	44	183
2-C-240A	A420-065508-00	Continuous	240	650	13	54

When ordering, please refer to Part No., as listed above.  
 Consult factory for custom configurations.

Stroke (in.)	Pull Force (oz.)							Holding Force (oz.)
	0.125	0.250	0.375	0.500	0.625	0.750	1.000	-
Continuous Duty	20	17	16	14	10	6	n/a	50
*Intermittent Duty	54	45	42	36	26	15	n/a	80

## UL Recognition

Recognized under the  Component Recognition Program of Underwriters Laboratories, Inc.

## Continuous Duty

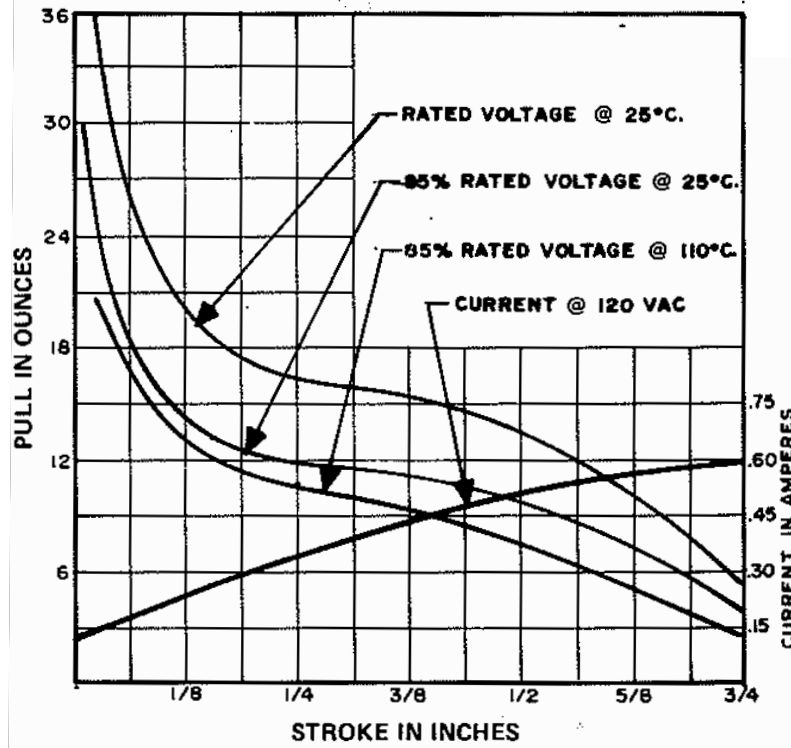
100% 'On' Time

## \*Intermittent Duty

25% 'On' Time, (300 Seconds 'On' Max. Followed By 900 Seconds 'Off' Min.)

## RoHS

These parts comply with **RoHS** Directive 2002/95/EC



## TYPICAL PULL CURVES

