

# SW1A-W1C Automation Organizer

Think Automation and beyond...



## Type

Name	Ordering Type No.	Remarks	
Application Software	Automation Organizer CD (English, Japanese, Chinese) (WindLDR is also available in German and Spanish)	SW1A-W1C	
User's Manual	MicroSmart Pentra FC5A (Note 1)	Japanese	FC9Y-B1137
		English	FC9Y-B1138
	MicroSmart FC4A (Note 1) (Note 2)	Japanese	FC9Y-B1142
		English	HG9Y-B1119
	WindO/I-NV2	Japanese	HG9Y-B1118

Note 1: Includes the operating instructions of WindLDR.  
Note 2: English version of MicroSmart FC4A can be downloaded from IDEC's website.

## Applicable PLCs and Operator Interfaces

### • Programmable Controllers

Type	FC5A MicroSmart Pentra		FC4A MicroSmart		FC3A OpenNet Controller
	Slim	All-in-one	Slim	All-in-one	
Maximum I/O Points	512	88	264	88	480
Appearance					

### • Operator Interfaces

Type	HG1F	HG2G	HG2F	HG3F	HG4F	HG2S
Screen Size	4.6 inches	5.7 inches	5.7 inches	10.4 inches	12.1 inches	5.7 inches
Pixels	300 x 100	320 x 240	320 x 240	640 x 480	800 x 600	320 x 240
LCD	STN	STN	STN	TFT	TFT	STN
Display Color	Mono-chrome	256 colors/ Mono-chrome	256 colors/ Mono-chrome	256 colors	256 colors	256 colors/ Monochrome
Appearance						

## System Requirements

Item	Requirement
OS	Windows 2000 (SP4), XP (SP3), Vista (except for 64-bit version)
CPU	1 GHz minimum
Memory	512MB minimum (1GB recommended)
Available Disk Space	800MB minimum
Graphic	XGA (1024 x 768) minimum
User	Windows 2000/XP: administrator account Windows Vista: administrator account
Others	Mouse, CD-ROM drive .NET framework 2.0 or later

### Software Registration

After purchasing Automation Organizer, please register your software so that IDEC can notify you of any future upgrades or enhancements.

### Download Center

Users who already have WindLDR or WindO/I-NV2 can upgrade their software to the Automation Organizer.

<http://www.idec.com/download/>

Manuals, catalogs, sample programs, and CAD data can also be downloaded.

## Precautions for Upgrading

### For WindLDR users:

- The free WindO/I-NV2 update does not contain the Symbol Factory of over 5000 symbols. Purchasing of Automation Organizer is necessary to obtain the Symbol Factory symbols.
- WindLDR Ver. 5\* saves user programs in the following seven file types:  
\*.ldr (ladder program), \*.sym (symbol data), \*.bmk (bookmarks data), \*.cus (custom monitor data), \*.pcv (print settings data), \*.obu (device data list), \*.cod (binary code)  
WindLDR Ver. 6 saves these data as a \*.pjw file.

### For WindO/I-NV2 users:

Symbol Factory cannot be used with WindO/I-NV2 of Ver.2.1\* or before. Automation Organizer is necessary to use Symbol Factory.

	<b>Safety Precautions</b>
	• Read the user's manual or operating instruction sheets attached to the product to make sure of correct operation.
	• Special expertise is required to install, wire, program, and operate the Automation Organizer. People without such expertise should not use Automation Organizer.
	• Use Automation Organizer for programming the IDEC applicable products only. • IDEC is not held liable or responsible for the user programs which users created using Automation Organizer.

Specifications and other descriptions in this catalog are subject to change without notice.



## IDEC CORPORATION

7-31, Nishi-Miyahara 1-Chome, Yodogawa-ku, Osaka 532-8550, Japan  
Tel: +81-6-6398-2571, Fax: +81-6-6392-9731  
E-mail: marketing@idec.co.jp

### IDEC CORPORATION (USA)

Tel: +1-408-747-0550 / (800) 262-IDEA (4332)  
Fax: +1-408-744-9055 / (800) 635-6246  
E-mail: opencontact@idec.com

### IDEC CANADA LIMITED

Tel: +1-905-890-8561, Toll Free: (888) 317-4332  
Fax: +1-905-890-8562  
E-mail: sales@ca.idec.com

### IDEC AUSTRALIA PTY. LTD.

Tel: +61-3-9763-3244, Toll Free: 1800-68-4332  
Fax: +61-3-9763-3255  
E-mail: sales@au.idec.com

### IDEC ELECTRONICS LIMITED

Tel: +44-1256-321000, Fax: +44-1256-327755  
E-mail: sales@uk.idec.com

### IDEC ELEKTROTECHNIK GmbH

Tel: +49-40-25 30 54 - 0, Fax: +49-40-25 30 54 - 24  
E-mail: service@idec.de

### IDEC (SHANGHAI) CORPORATION

Tel: +86-21-5353-1000, Fax: +86-21-5353-1263  
E-mail: idec@cn.idec.com

### IDEC (BEIJING) CORPORATION

Tel: +86-10-6581-6131, Fax: +86-10-6581-5119  
IDEC (SHENZHEN) CORPORATION  
Tel: +86-755-8356-2977, Fax: +86-755-8356-2944

### IDEC IZUMI (H.K.) CO., LTD.

Tel: +852-2803-8989, Fax: +852-2565-0171  
E-mail: info@hk.idec.com

### IDEC TAIWAN CORPORATION

Tel: +886-2-2698-3929, Fax: +886-2-2698-3931  
E-mail: service@tw.idec.com

### IDEC IZUMI ASIA PTE. LTD.

Tel: +65-6746-1155, Fax: +65-6844-5995  
E-mail: info@sg.idec.com

www.idec.com

Cat. No. EP1303-0 MARCH 2009 2.7T PRINTED IN JAPAN

# Automation Organizer

## System configuration software for the creation of the optimal automation environment



Automation Organizer  
**WindCFG** System Configuration Software

Automation Organizer  
**WindLDR** PLC Programming Software

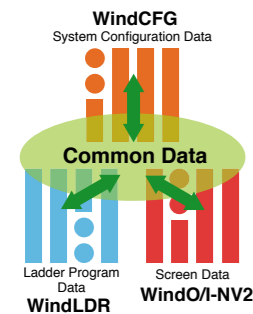
Automation Organizer  
**WindO/I-NV2** OI Touchscreen Programming Software

Automation Organizer is a software package consisting of the three individual programs: WindCFG, WindLDR, and WindO/I-NV2.

IDEC CORPORATION

# Automation Organizer

New user-friendly interface for less work in system configuration, programming, debugging, and system start-up.



## System Integration Software: Automation Organizer

A system using PLCs and operator interfaces can be designed intuitively with the system configuration software WindCFG. Components can be laid out easily by dragging and dropping the icons. Tags and other data, which previously needed separate management by WindLDR and WindO/I-NV2, can now be managed under one software—WindCFG. Central data configuration and management is possible, and WindCFG's batch setting and editing functions dramatically increase efficiency of overall system development.

## Automation Organizer WindCFG System Configuration Software Ver. 1.\*

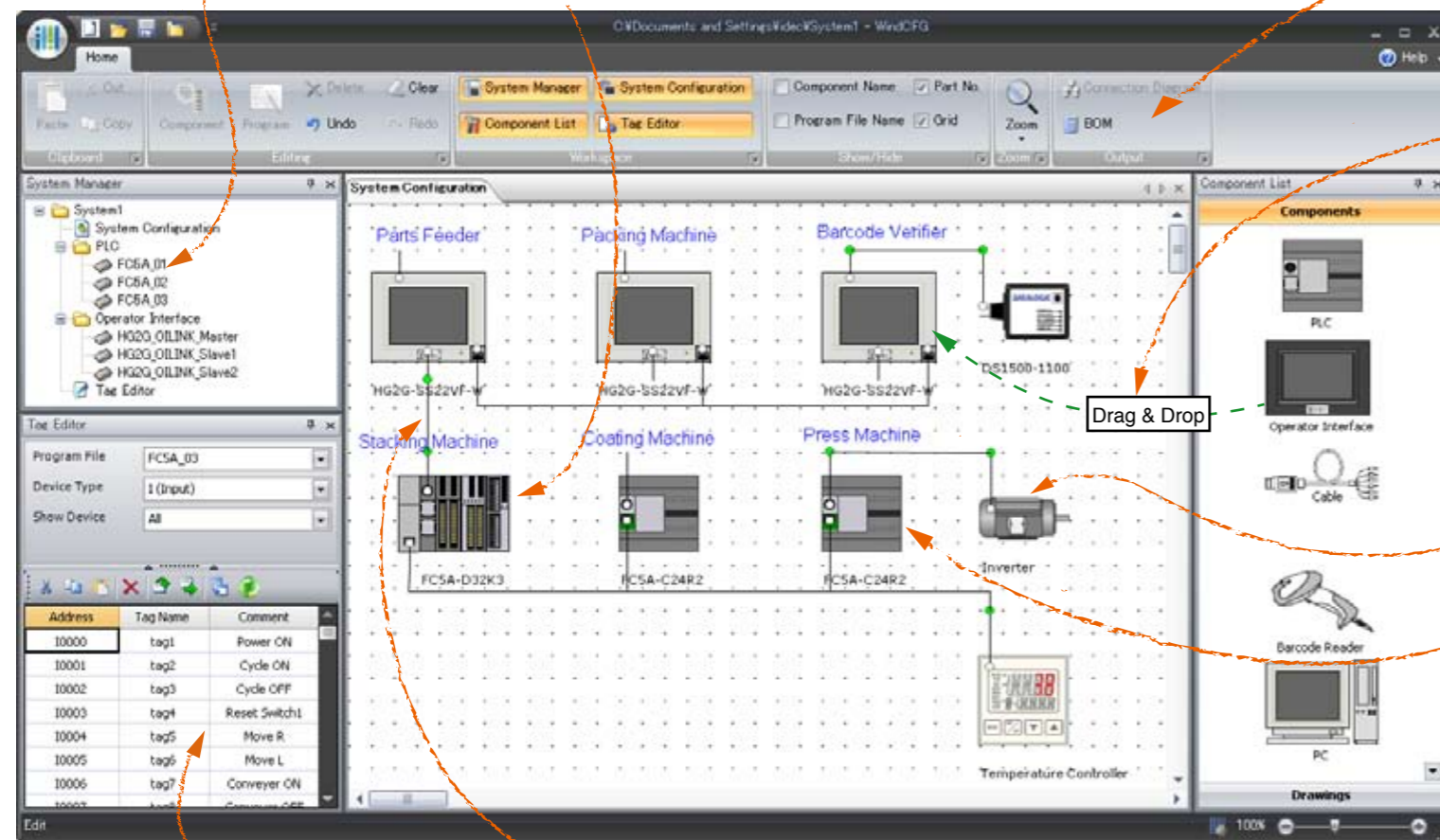
### Easy configuration and management of systems using PLCs and operator interfaces

#### Central control of program files

Program files of both PLCs and operator interfaces can be managed by WindCFG.

#### Easy management of optional PLC modules

PLC types and expansion modules can be selected from the components list with the choice of power and I/O points. Type number list is also provided, eliminating the possibility of selection errors.



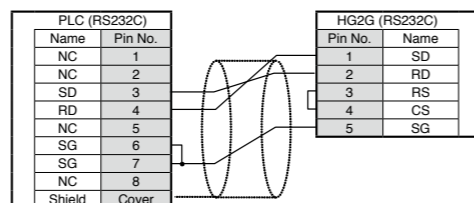
#### Consolidated management of device addresses and tag names

Device addresses and tag names can be edited and managed by a tag editor, and any changes are reflected in WindLDR and WindO/I-NV2 automatically. A cross-reference function makes it easy to locate where the device addresses and tag names are used.

Tag Name	Device Address	Comment
tag1	10000	Power ON
tag2	10001	Cycle ON
tag3	10002	Cycle OFF
tag4	10003	Reset Switch1
tag5	10004	Move R
tag6	10005	Move L
tag7	10006	Conveyer ON
tag8	10007	Conveyer OFF

#### Cable selection and diagrams

Just connect a PLC and an operator interface with a cable; the best choice of cable and communication conditions is selected automatically. Connection diagram is shown by clicking the connection diagram icon.



#### Data output function for system design Bill of materials

System configuration diagram, cable diagram, and bill of materials can be outputted as an RTF file for use with software such as Microsoft Word.

Part No.	Product Name	Quantity	Price	Total	Comment
PLC	PLC (Micro)	1	10000	10000	PLC (Micro)
PLC	PLC (Mini)	1	20000	20000	PLC (Mini)
PLC	PLC (Compact)	1	30000	30000	PLC (Compact)
PLC	PLC (Rack)	1	40000	40000	PLC (Rack)
PLC	PLC (Special)	1	50000	50000	PLC (Special)
PLC	PLC (Total)	5	150000	150000	PLC (Total)

#### New User Interface

User-friendly user interface with available functions.

#### System configuration by drag- and drop-action

Components such as PLCs, operator interfaces, and bar-code readers can be laid out easily and flexibly.

#### Flexible layout of text and graphics

Layout of image files and texts can be designed, enabling flexible system configuration.

#### WindLDR and WindO/I-NV2 Start-up with icons

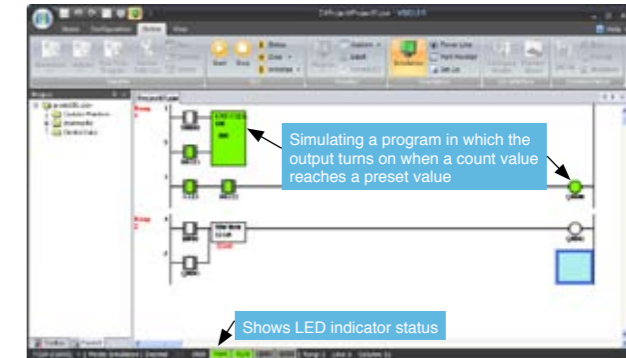
WindLDR and WindO/I-NV2 can be started using the icons of PLC and operator interface for quick programming.

## Automation Organizer WindLDR PLC Programming software Ver. 6.\*

No special tools required. Easy debugging with simulation and online monitoring functions.

### Program simulation

Simulation screen

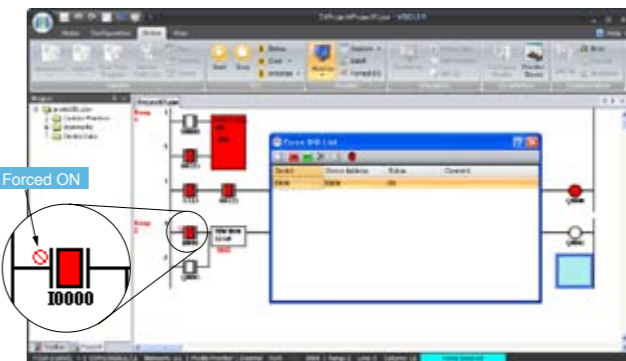


#### Simulation

Actual PLC is not necessary to test your programs. The operation of ladder programs can be confirmed easily on the WindLDR screen without connecting a PLC.

### Program monitoring while PLC is running

Monitor Screen



#### Online Monitoring

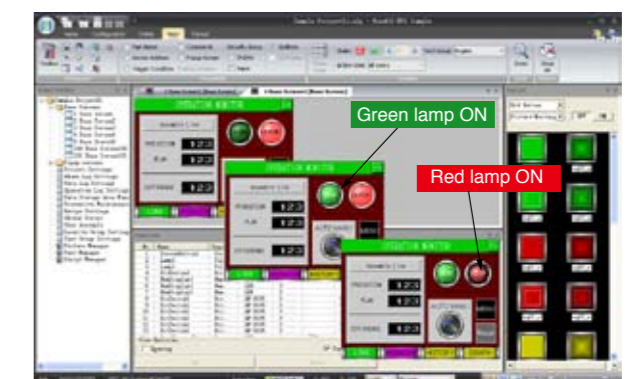
Monitoring a program is possible by connecting PLCs installed in a system. The I/O status can be confirmed on a WindLDR screen. The I/Os of the PLC can be turned on and off in Forced I/O List for testing. Multiple devices can be monitored by using the batch monitor function, increasing the efficiency of debugging.

## Automation Organizer WindO/I-NV2 O/I Touchscreen Programming Software Ver. 4.\*

Useful functions allow you to create and test programs easily and quickly.

### State view and monitoring functions reduce programming work

Screen Image



#### State View

On/off status of buttons and lamps, and also the changes of each component can be previewed on the screen.

#### Monitoring

Actual operation of operator interface can be confirmed easily while editing the data. Devices and their operations on the operator interface can be shown and checked on the screen, making it possible to create programs easily and quickly.