

# Brand New! Unique Product Development!

**Modular Thru-Panel Medium-Power Block**

**Pitch: 16mm**

**600 Volts / 60 Amps**

**PART#:**  
**OTB-358**

**Type:**  
Medium-Power Thru-Panel

**Features:**  
Thru-Panel, Barrier Construction  
Plastic, Finger-Safe Cover Included

**Applications:**  
Suitable for:  
Motor Controls  
Industrial Controls  
Pump Controls  
Electrical Switch Gear  
Off-Highway Vehicles

**Electrical**  
**Rated Voltage:**  
600V

**Rated Current:**  
60A

**Wire Size:**  
3-10AWG CU

**Operating Temperature:**  
-40C to +90C

**Materials**  
**Housing:**  
Polycarbonate (UL94V-0)  
Standard Color: Black

**Cover:**  
Polycarbonate (UL94V-0), Clear

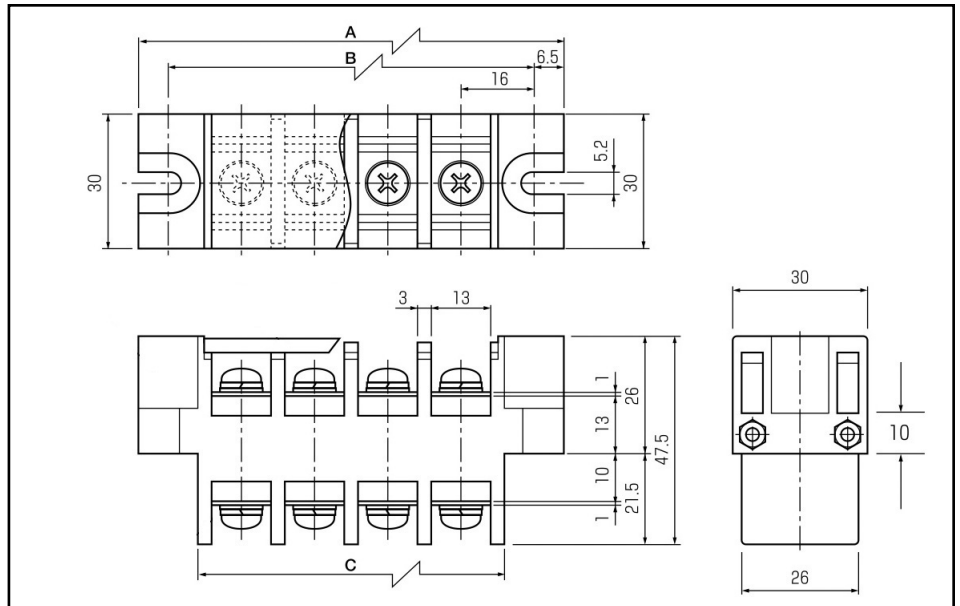
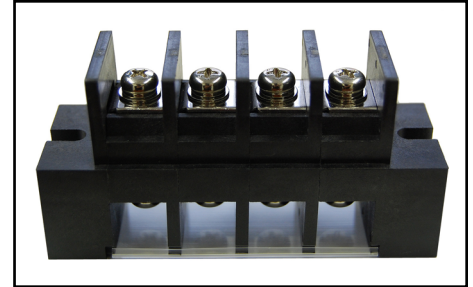
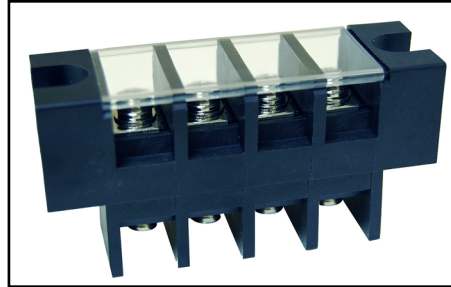
**Terminal:**  
Brass, Nickel Plated

**Positions Available:**  
2-15

**Screw Size:**  
M5x12L, Steel, Nickel plated

**Withstanding Voltage:**  
AC2500V

**Torque:**  
2 lbs. per inch

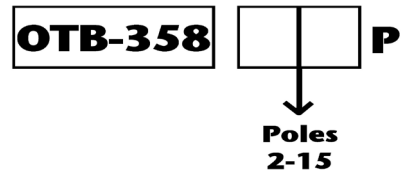


**BlockMaster Electronics' new OTB-358 Series are medium-power, thru-panel terminal blocks available in 2-15 positions.**

**BlockMaster's OTB-358 series are perfect for interfacing internally wired products to the outside world. They offer a clear, protective cover to reduce shock hazard, and each terminal has a screw with lockwasher for convenient field wiring as shown. Suitable for industrial controls, spa controls or any medium-power field wiring to control box application.**



## HOW TO ORDER:



World Class Terminal Blocks

1400 Howard Street Phone: (847) 956-1680  
Elk Grove Village, IL 60007 Fax: (847) 956-1690

[www.BlockMaster.com](http://www.BlockMaster.com)