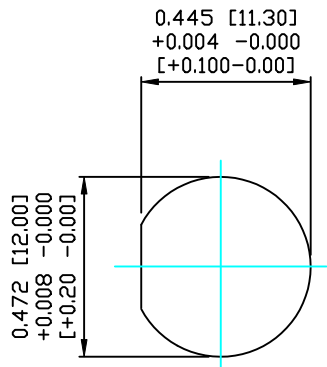
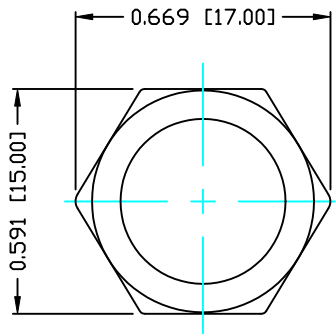


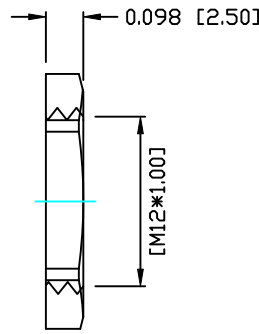
DESCRIPTION: M12 MALE - PANEL MOUNT (REAR) - SOLDER CUP - 3 POS.



PANEL CUTOUT



NUT



NOTE:

MATERIAL

HOUSING:
CONTACT:
NUT:
SHELL:
O-RING:

PBT UL94V-0, BLACK
COPPER ALLOY
COPPER ALLOY
COPPER ALLOY
EPDM, BLACK

FINISH
CONTACT:

GOLD 10µ MIN.
OVER 50µ NICKEL
NICKEL PLATED
60µ TO 100µ OVER ALL
NICKEL PLATED
60µ TO 100µ OVER ALL

NUT:

SHELL:

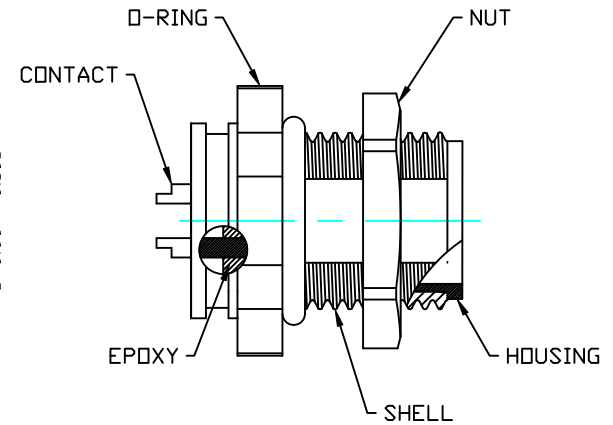
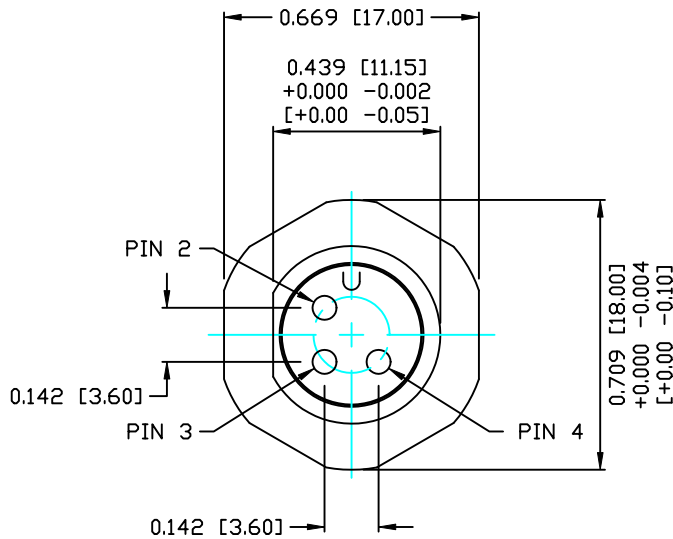
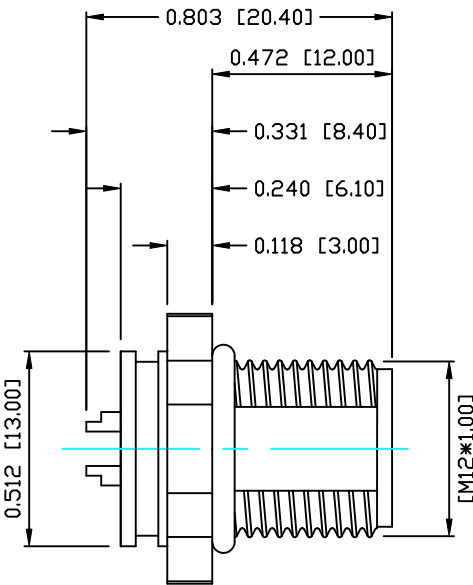
ELECTRICAL

RATED CURRENT:
RATED VOLTAGE:
WATER PROOF:

5A
125V
IP67

ENVIRONMENT

OPERATION TEMPERATURE: -40°C TO +85°C
WIRE GAUGE: 24-28 AWG



RoHS COMPLIANT

DO NOT SCALE FROM DRAWING



THESE DRAWINGS AND SPECIFICATIONS ARE THE PROPERTY OF NorComp AND SHALL NOT BE REPRODUCED, COPIED OR USED AS THE BASIS FOR THE MANUFACTURE OR SALE OF APPARATUS WITHOUT WRITTEN PERMISSION.

DRAWN:
C. SMITH

DATE:
08-28-14

CHECKED:

DATE:

NorComp

SCALE:
N.T.S.

SHEET
1 OF
1

REV
0

DWG NO.

859-003-103R004