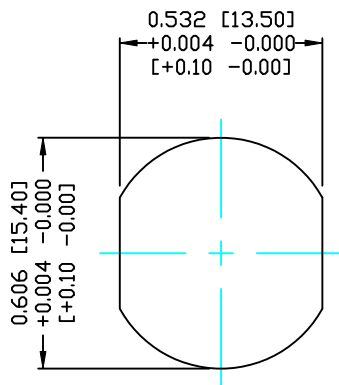
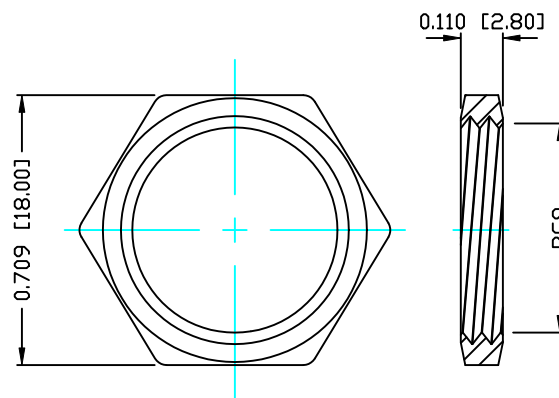


DESCRIPTION: M12 MALE - PANEL MOUNT (REAR) - 4 POS.



PANEL CUTOUT



NUT

NOTE:

MATERIAL

HOUSING: PBT UL94V-0, BLACK
CONTACT: BRASS
NUT: BRASS
SHELL: BRASS
O-RING: EPDM

FINISH

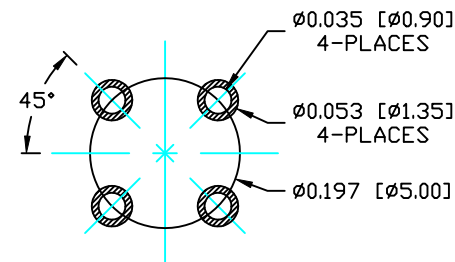
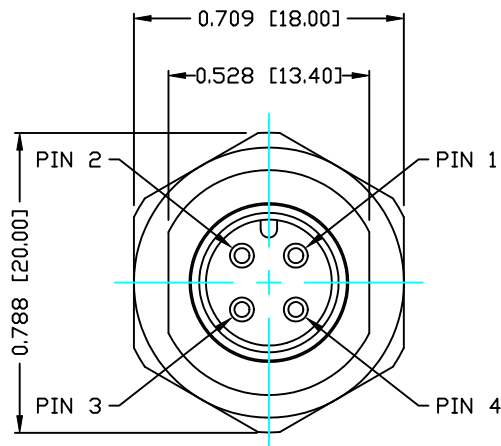
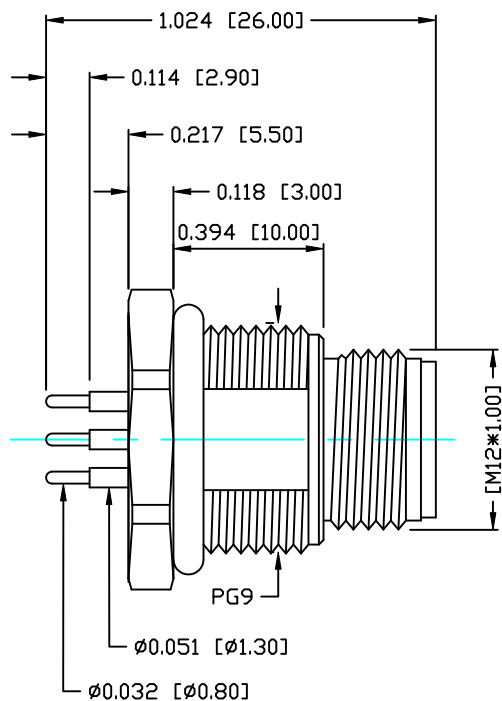
CONTACT: GOLD 10µ" MIN.
OVER 50µ" NICKEL
NICKEL PLATED
NICKEL PLATED

ELECTRICAL

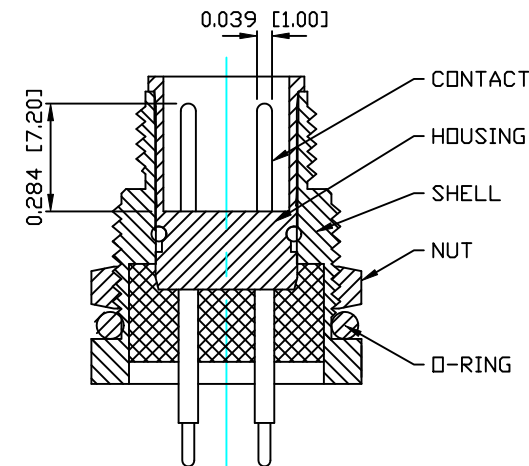
RATED CURRENT: 5A
RATED VOLTAGE: 125V
WATER PROOF: IP67

ENVIRONMENT

OPERATION TEMPERATURE: -40°C TO +85°C



PLC LAYOUT



RoHS COMPLIANT

DO NOT SCALE FROM DRAWING



THESE DRAWINGS AND SPECIFICATIONS ARE THE PROPERTY OF NorComp AND SHALL NOT BE REPRODUCED, COPIED OR USED AS THE BASIS FOR THE MANUFACTURE OR SALE OF APPARATUS WITHOUT WRITTEN PERMISSION.

DRAWN:
C. SMITH

DATE:
01-09-15

CHECKED:

DATE:

NorComp

SCALE:
N.T.S.

SHEET 1 OF 1

REV 0

DWG NO.

860-004-113R004