

# HDMI 2.0 HDMI to HDMI Mini

- CPHD2v002 (0.5M to 3M)

## Features

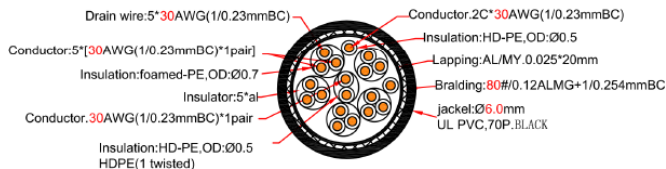
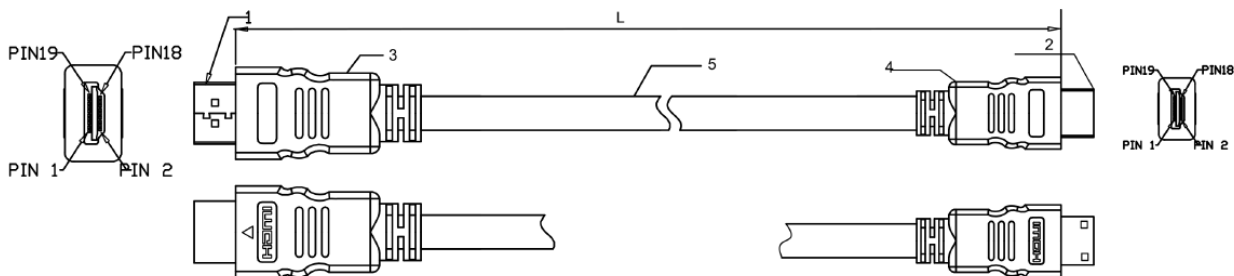


- HDMI 2.0 - 2160P (HDMI to HDMI MINI)
- Available Lengths - 0.5M to 3M
- 24K Gold Connectors
- 30AWG - OD 6mm



## Technical Parameters

ECN MARK	ECN NO.	DESCRIPTION	DATE
----------	---------	-------------	------



**5P+4C(30AWG)  
2.0 Version**

- FEATURES**
1. Gold-plated plugs
  2. compliant ROHS, 2160P

- ELECTRICAL SPECIFICATION:**
1. Withstanding voltage: 350VDC 0.1SEC
  2. Insulation Resistance: 3Mohm 300VDC

LENGTH
3000mm
2000mm
1500mm
1000mm
500mm

Type A PIN	Signal Assignment	Type A PIN
1 Blue		Blue 1
2 ground		ground 2
3 white		white 3
4 Blue		Blue 4
5 ground		ground 5
6 white		white 6
7 Blue		Blue 7
8 ground		ground 8
9 white		white 9
10 Blue		Blue 10
11 ground		ground 11
12 white		white 12
14 Blue		Blue 14
17 ground		ground 17
19 white		white 19
15 Yellow		Yellow 15
16 Orange		Orange 16
13 white		white 13
18 red		red 18
SHELL		SHELL

ITEM.	DWG NO	DESCRIPTIONS&SPECIFICATIONS	QTY.	REMARK	Unit:MM	TOLERANCE	SIGNATURES	DATE	SCALE	TITLE	DWG NO
5		HDMI Cable 1.4V OD:6.0mm PVC BLACK		IPC		0-10 ±0.20	DRAFT: Jay CHECKED: APPROVAL:		A1	CPHD2v002	
4		PVC BLACK 45P		IPC	10-99 ±1.00						
3		PVC BLACK 45P		IPC	100-999 ±10.0						
2		HDMI TYPE C PLUG 19PIN(Pins, SHELL Glod-Plated)		IPC	1000-9999 ±100.00						
1		HDMI TYPE A PLUG 19PIN(Pins, SHELL Glod-Plated)		IPC	10000-9999 ±1000.00						