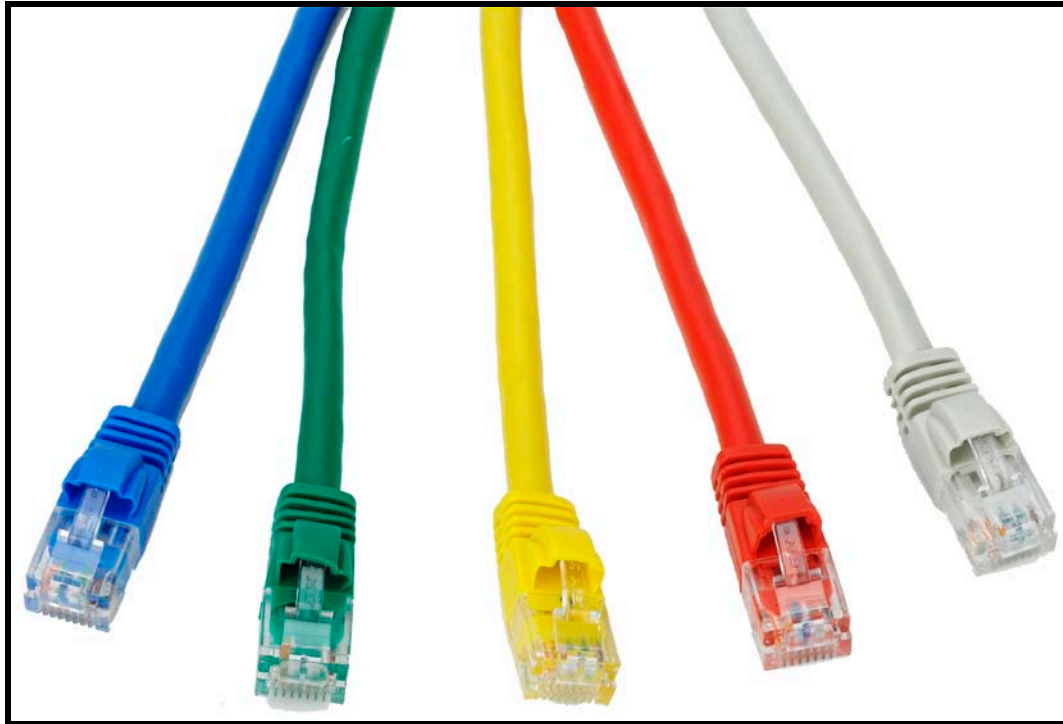


Category 6 Patch Leads



CATEGORY 6 (code: SP*)

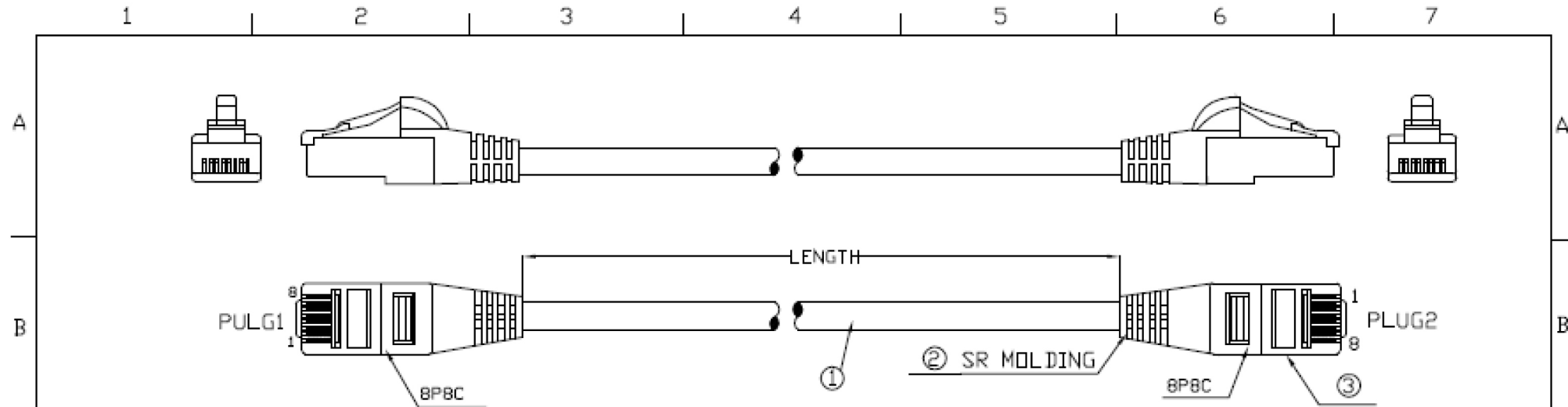
Features

- Offer full compliance with the Category 6 standard at component level (TIA/EIA-568-B.2-1)
- Fitted with flush moulded snag-less strain relief boots, suitable for patching into high density hubs and switches
- Individually polythene bagged and marked with length
- Colours: grey, red, yellow, green and blue. Additional colours available to order
- 100% tested

Specifications

Materials:

- Contacts: 50 μ m/1.27 μ m gold plated
- Conductors: 24 AWG stranded bare copper with cruciform divider
- Jacket: PVC



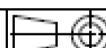
PIN OUT:T568B

PLUG1	PLUG2	COLOR
PIN1	PIN1	WHITE/ORANGE
PIN2	PIN2	ORANGE
PIN3	PIN3	WHITE/GREEN
PIN4	PIN4	BLUE
PIN5	PIN5	WHITE/BLUE
PIN6	PIN6	GREEN
PIN7	PIN7	WHITE/BROWN
PIN8	PIN8	BROWN

SHEATH COLOUR: Bk, Wh, Gy, Bl, Gn, Or, Yw, Rd

LENGTH=1M,2M,3M,5M, etc (Indicated '*')

③	Insert 2	PC	Cross		
	Insert 1	PC	CAT6		
	PLUG	PC	8P8C-5.8F-Double deck "BN" Mark		
②	MOLDING	PVC	SR		
①	Cord	PVC	UTP CAT6 24AWG With Cross		
NO.	Name	Material	Specification	QTY	Drawing

APPD.		P/N.	SP*(colour)		
CHKD.		FILE	TLXX8C24XXXS946.DWG		
DR.		TITLE	CAT 6 Patch Lead		

REV.	DESCRIPTION	ENG.	APPROVAL
1			
2			
3			
4			

TUK Limited ISO 9001:2000		SCALE	/	SIZE	A4
UNIT	MM	REV.	A		