

Type: Female connector straight with 2 rows

Termination: Press-fit, solder, THTR

Number of contacts: 32, 64

Pitch: 2.54 mm

Operational current: 1.5 A

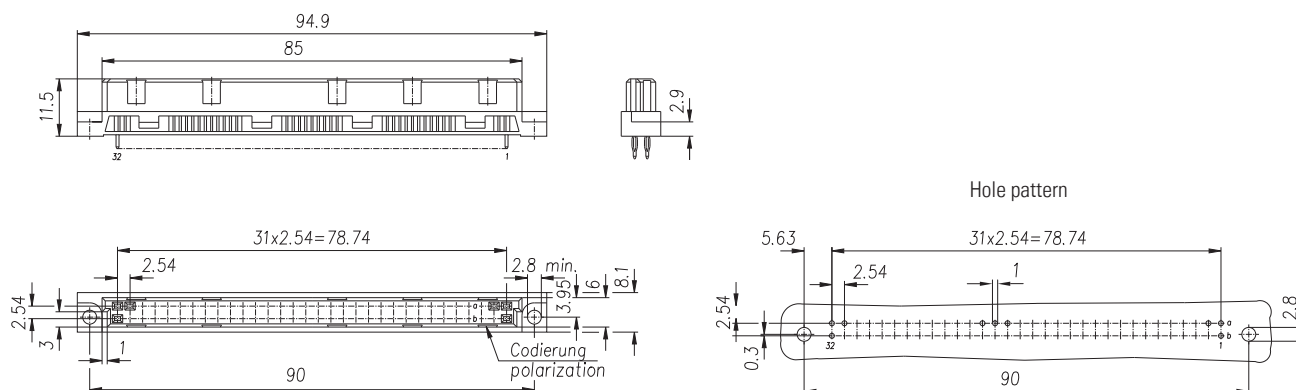
Packaging: Tube

Standard: IEC 60603-2



Technical Specifications on page 36

Dimensions in mm



For detailed drawings visit www.ept.de

Accessories

- Processing tools p. 300
- Coding p. 132

Note / Options

- Type B in IDC p. 128

Mating connector / Application:

 Type B Male connector (p. 40)

 Type Q Male connector (p. 72)