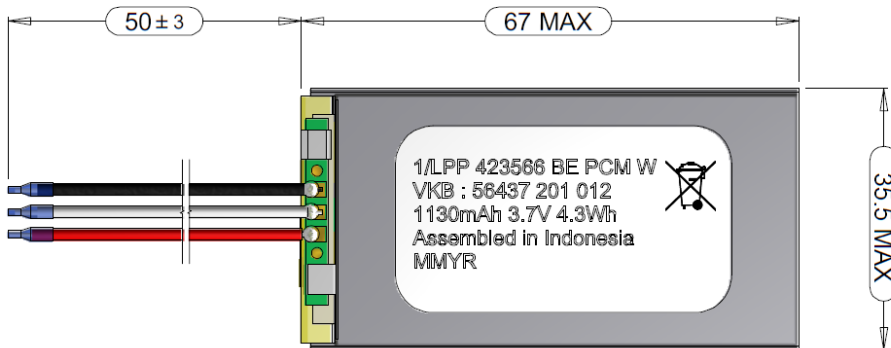


Product Information



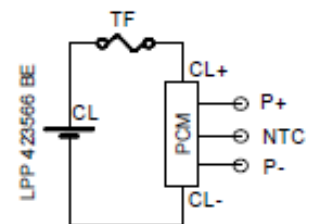
1/LPP 423566 BE PCM W
 ▶ VKB 56437 201 012



1/LPP 423566 BE PCM W
 VKB : 56437 201 012
 1130mAh 3.7V 4.3Wh
 Assembled in Indonesia
 MMYR

MM ▶ month two digits
 Y ▶ year one digit
 R ▶ plant one digit

Circuit Diagram



1. GENERAL

Battery Pack including safety circuit and wires

- Cell ▶ LPP 423566 BE
- PCM ▶ Yes
- NTC ▶ 10 kΩ ± 1%; B-Value 3380 ± 1%
- ID ▶ None
- Configuration ▶ 1S
- Weight ▶ appr. 26g

2. ELECTRICAL SPECIFICATION

- Rated Capacity ▶ 1130mAh min., 1160mAh typical
- Nominal Voltage ▶ 3.7V
- Watt-Hour Rating ▶ 4.3Wh
- Charging Method ▶ Constant Current + Constant Voltage
- Max. Charge Voltage [V]: ▶ 4.2 (±50mV)
- Max. Continuous Charge Current: ▶ 1130mA (limited by cell DS)
- Rec. Charge Cut Off: ▶ by current 20mA or timer 2.5h
- Max. Continuous Discharge Current: ▶ 2000mA (limited by PCM)
- Rec. Discharge Cut Off: ▶ 3V
- Internal Impedance: ▶ approx. 120mΩ
- Expected Cycle Life @ (C/2) @ 20°C ▶ 400 cycles >75% of initial cap.

CELL PROTECTION

- Overcharge Detection ▶ 4.275V ± 25mV (0.7 to 1.3sec. delay, resume 4.275V ± 25mV)
- Overdischarge Detection: ▶ 2.30V ± 85mV (14 to 26msec. delay, resume 2.3V ± 58mV)
- Overcurrent Detection ▶ 2.0A to 4.0A (8 to 16msec. delay)

3. AMBIENT CONDITIONS

- Temperature Range
 - Charge ▶ 0 to +45°C
 - Discharge ▶ -20 to +60°C
 - Storage Temperature ▶ 6 months at -20 to +35°C
 - ▶ 1 month at -20°C to +45°C
- Humidity ▶ 65 ± 20%RH

4. ENVIRONMENTAL AND SAFETY

Please follow VARTA Handling and Safety Precautions for Lilon & LiPolymer.
 The cell used is a UL recognized component according to UL1642 and UN 38.3 certified.
 The cell is IEC 62133 edition 2 certified.
 This battery meets the requirements of Battery Directives and the battery parts are RoHS-Compliant.

Minimum Order Quantity: 600 pcs / Order Multiples: 120 pcs - Product for OEM customers only!

