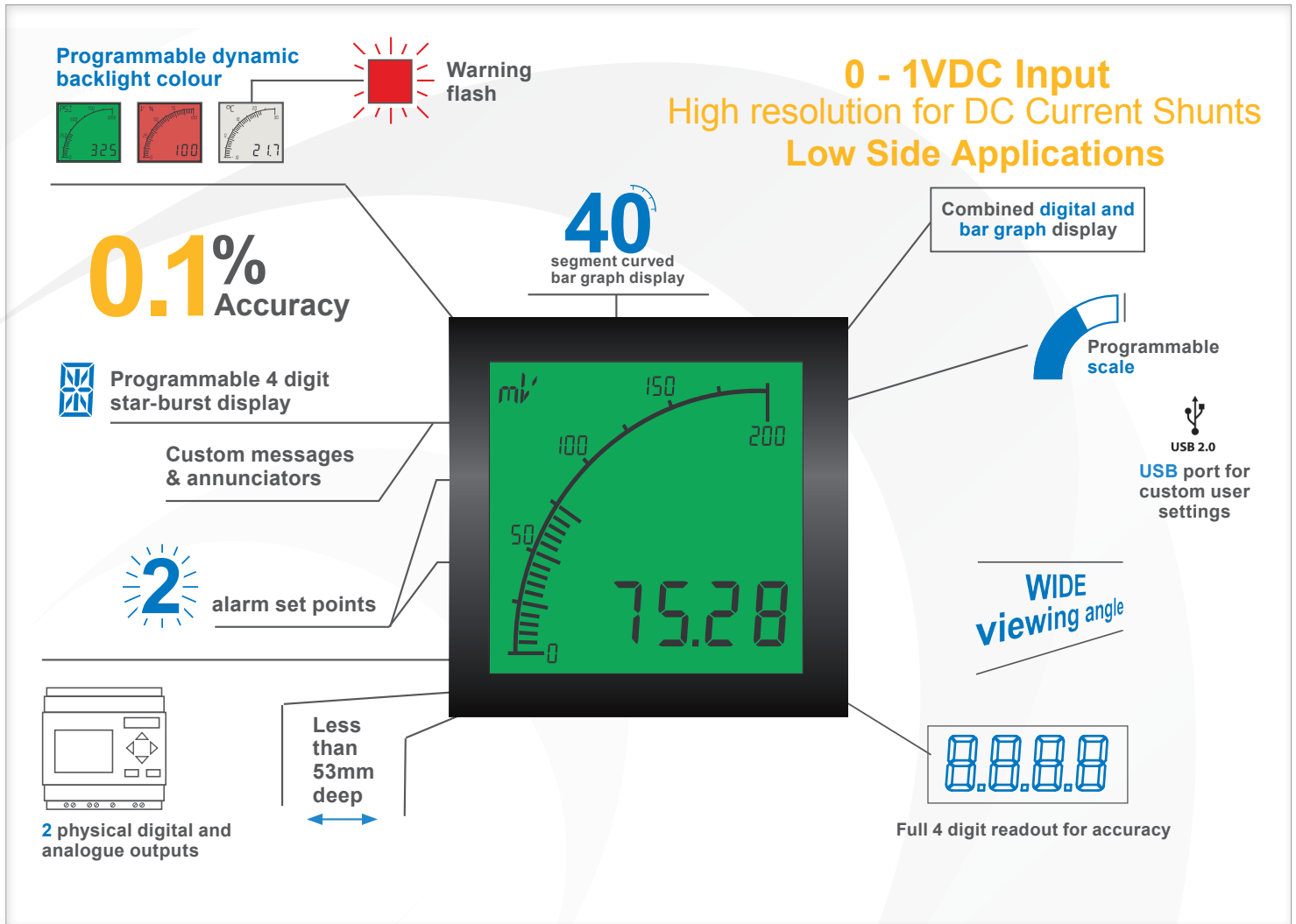




Shunt Meter

For DC Current Measurement

Easy to Use. Easy to Read.



Programmable dynamic backlight colour

Warning flash

0.1% Accuracy

Programmable 4 digit star-burst display

Custom messages & annunciators

2 alarm set points

Less than 53mm deep

2 physical digital and analogue outputs

40 segment curved bar graph display

Combined digital and bar graph display

Programmable scale

USB 2.0 port for custom user settings

WIDE viewing angle

Full 4 digit readout for accuracy

0 - 1VDC Input
High resolution for DC Current Shunts
Low Side Applications

Featuring an acclaimed easy-to-read display and a high resolution input, the Shunt Meter takes the APM into a wide range of new applications, where accurate DC current measurement is required.

The APM Shunt Meter is ideal for DC current measurement applications in marine, leisure, material handling, and industrial applications such as power supplies, load banks and charging systems.

The programmable scale and custom annunciators mean users can tailor the meter to display their critical parameters exactly how they want. Dynamic backlighting, in conjunction with setpoints, means operators are visually alerted when a parameter is out of range. The two outputs can be used to connect the APM to other systems in the process, meaning the APM Shunt Meter is much more than just a display.

Key Features

Large multi-format display that incorporates:

- 40 segment bar graph display
- Large 4-digit display
- Separate Starburst display area for annunciators, custom messages and alarm information
- Dynamic backlight colour

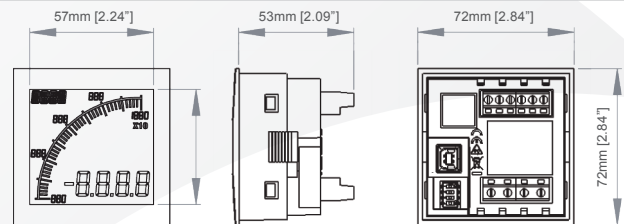
Programmable:

- Display Range (Both Min & Max Values)
- Custom annunciators
- User-selectable backlight color and intensity
- Two independent alarm set-points
- Two independent outputs
- 4-20mA analogue monitor output

Visibility:

- User-adjustable backlight brightness and colour
- Large display
- Wide viewing angle (horizontal and vertical)
- Custom annunciators

Dimensions:



Panel cutout: 68mm x 68mm [2.68" x 2.68"] as per DIN43700/IEC61554

INPUT

Range	0 - 1 VDC
Impedance	1 Meg
Accuracy	0.1% of signal or 0.5mV, whichever is greater

ENVIRONMENTAL

Temperature - operating	-10 to +60°C
Temperature - storage	-40 to +70°C
IP rating (from the front)	IP65
NEMA rating (from the front)	Type 4 & Type 12

POWER SUPPLY

Nominal Input	12-24 VDC
---------------	-----------

DISPLAY

Number of digits	4
Digit height	12mm [0.47"]
Number of message characters	4
Backlight colours	Red, Green, White
LCD display	Positive or Negative

OUTPUTS

Max voltage	24V
Max current	500mA
Analogue output	4-20mA

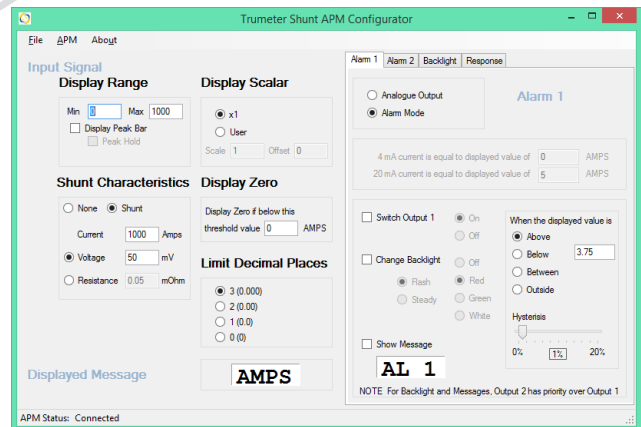
CERTIFICATION

UL, cUL, CE



Easy To Use Software

Just plug into any USB port on your PC, run the freely available APM Configurator application and you're off. No drivers required.



Part Numbers:

APM-SHUNT-APO
APM-SHUNT-ANO
022128-01

APM Shunt Meter, Positive LCD with outputs
APM Shunt Meter, Negative LCD with outputs
USB Cable

Full specifications available online

www.truAPM.com



www.trumeter.com

Trumeter (Europe)
Trumeter House
Europa Business Park
Bury,
BL9 5BT
Tel: +44 161 705 4317
Email: sales.uk@trumeter.com

Trumeter (The Americas)
702 S. Military Trail
Deerfield Beach, Florida
FL 33442,
USA
Tel: +1 954 725 6699
Email: sales.usa@trumeter.com

Innovative Design Technologies Sdn. Bhd
Lot 5881, Lorong Iks Bukit Minyak 1
Taman Perindustrian Iks, 14000 Bukit Tengah
Penang, Malaysia
Web: www.idtworld.com
Tel: + 604 5015700
Email: sales.my@idtworld.com