

Vpro-ECblue

for single phase alternating current, 200-277 V

RH25V-6IP



Description

Motor technology: EC
 Rated voltage U: 1~200-277 V*
 Rated frequency f: 50/60 Hz*
 Motor input power P: 0.23 kW*
 Rated current I: 1.65-1.20 A*
 Rated speed n: 3290 min⁻¹*
 Thermal class: THCL155*
 Min. permitted ambient temperature t_{R} : - 5 °C
 Max. permitted ambient temperature t_{R} at n_{max} : 60 °C
 Electrical connection: Integrated controller with attached cable
 Number of blades : 6
 Balancing quality: G 6.3
 Protection class: IP44
 Motor protection: Integrated active temperature management
 Impeller : High Performance Composite Material, uncoated, black
 Conformity: ErP 2015, CE

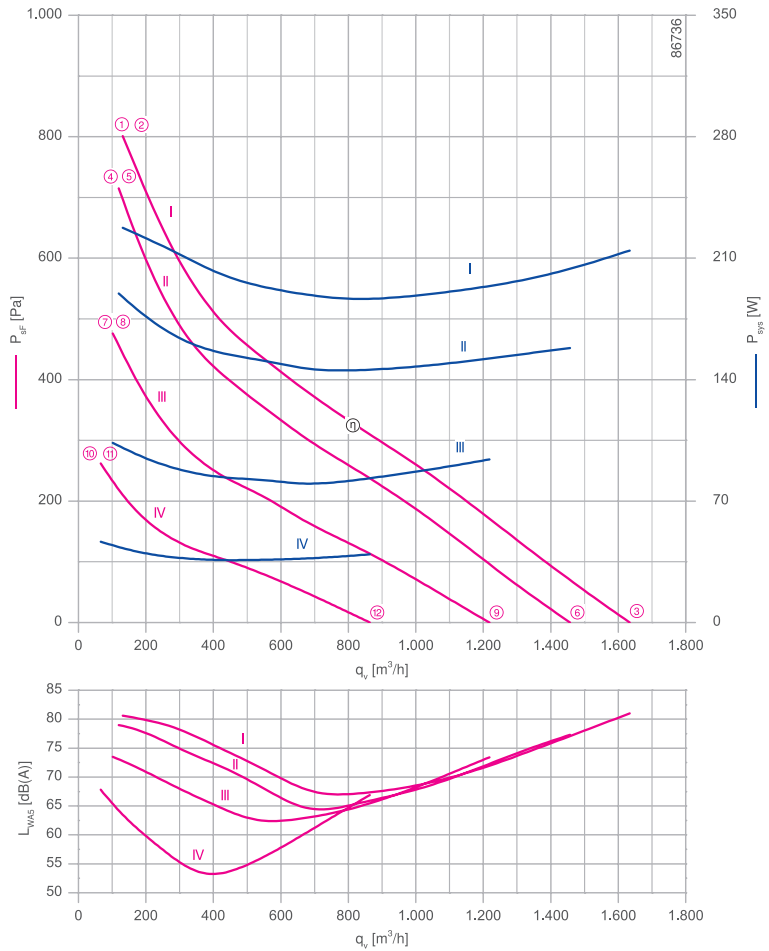
ErP-data

Efficiency η_{statA} : 46.5 %
 Efficiency: $N_{actual} = 64.7 / N_{target} = 62^{**}$
 EC controller integrated

*Rated data

**ErP 2015

Characteristic curve

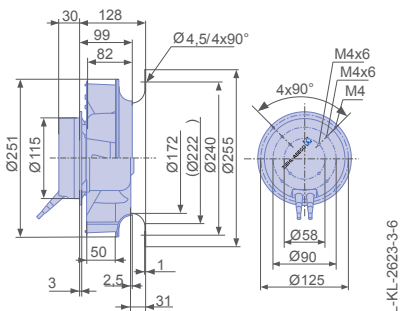


measured with inlet ring, without guard grille according to ISO 5801

- Inlet ring 00407900 Page 450
- Connection diagram KT00036A Page 547
- System components Page 448

Dimensions [mm]

Free-running motor impeller RH
 in installation position H/Vu/Vo



Performance data


Type	Characteristic curve	Speed %	Operating point	Current	Motor input power	Suction side sound power level
				I [A]	P _{sys} [W]	L _{WA5} [dB]
RH25V-6IP.0E.1R	I	100	①	1.45	230	81
			②	1.45	230	81
			③	1.35	210	81
	II	80	④	1.20	190	79
			⑤	1.20	190	79
			⑥	1.05	160	77
	III	60	⑦	0.70	100	74
			⑧	0.70	100	74
			⑨	0.64	95	73
	IV	40	⑩	0.34	46	68
			⑪	0.34	46	68
			⑫	0.30	40	67

Current values determined at 230V

Fan ordering information

Design RH*

Installation position H/Vu/Vo



Type RH25V-6IP.0E.1R
Basic electronics

Article no. 113251

Weight [kg] 2.80
* Inlet ring not included

Control technology

<p>Control module</p>  <p>➤ Page 464</p>	<p>Operating terminal</p>  <p>➤ Page 476</p>	<p>Expansion module</p>  <p>➤ Page 473</p>
---	---	---



Vpro-ECblue

for single phase alternating current, 200-277 V

RH28V-6IP



Description

Motor technology: EC
 Rated voltage U: 1-200-277 V*
 Rated frequency f: 50/60 Hz*
 Motor input power P: 0.17 kW*
 Rated current I: 1.30-0.94 A*
 Rated speed n: 2300 min⁻¹*
 Thermal class: THCL155*
 Min. permitted ambient temperature t_{r1} : - 5 °C
 Max. permitted ambient temperature t_{r2} at n_{max} : 60 °C
 Electrical connection: Integrated controller with attached cable
 Number of blades : 6
 Balancing quality: G 6.3
 Protection class: IP44
 Motor protection: Integrated active temperature management
 Impeller : High Performance Composite Material, uncoated, black
 Conformity: ErP 2015, CE

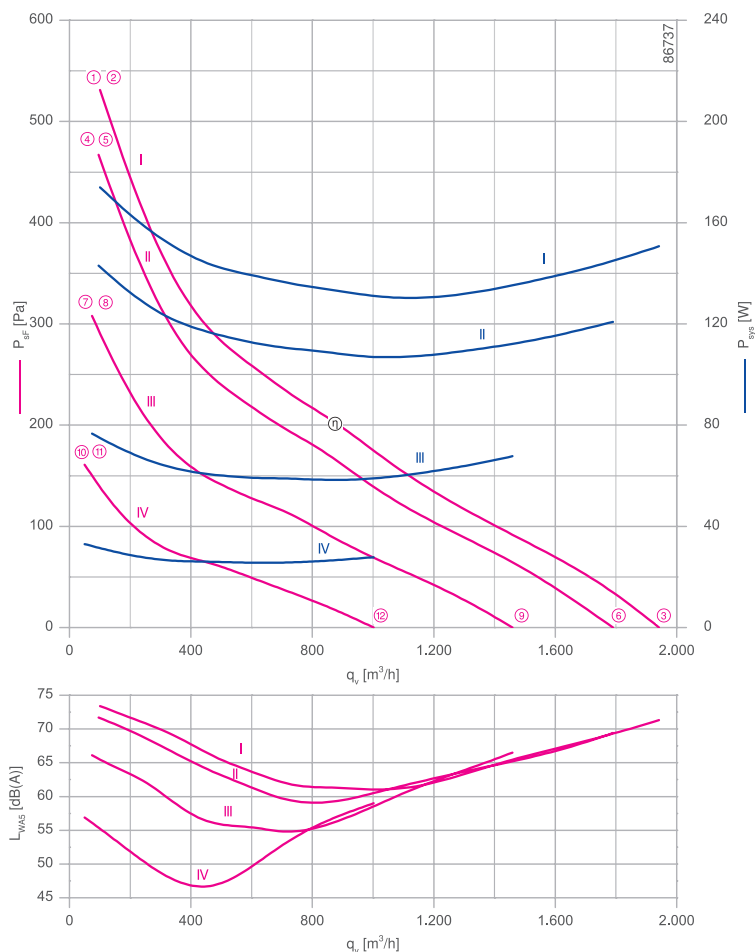
ErP-data

Efficiency η_{statA} : 43.6 %
 Efficiency: $N_{actual} = 63.3 / N_{target} = 62^{**}$
 EC controller integrated

*Rated data

**ErP 2015

Characteristic curve



measured with inlet ring, without guard grille according to ISO 5801

- Inlet ring 00275848 Page 450
- Connection diagram KT00036A Page 547
- System components Page 448

Dimensions [mm]

Free-running motor impeller RH
 in installation position H/Vu/Vo

