

MPLAB® Xpress Cloud-Based IDE

QUICK START GUIDE

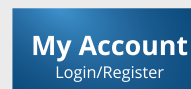
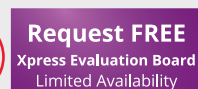


Welcome to MPLAB Xpress Cloud-Based IDE. MPLAB Xpress is an online development environment that contains the most popular features of our award-winning MPLAB X IDE. This simplified and distilled application is a faithful reproduction of our desktop-based program, which allows you to easily transition between the two environments.

MPLAB Xpress is a perfect starting point for new users of PIC® microcontrollers—no downloads, no machine configuration, and no waiting are necessary to get started on your system development.

OPTION 1: Preview MPLAB Xpress with Test Drive Mode

The fastest way to get started with MPLAB Xpress is Test Drive Mode. Simply point your browser to mplabxpress.microchip.com and click the “Test Drive” button. Most of the features of the IDE are available, and the MPLAB Xpress Evaluation Board can be programmed in this mode.



1 Load Example Code

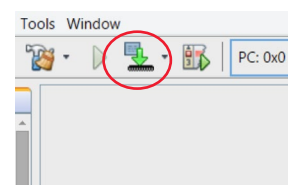
Begin your evaluation with our library of code examples from the MPLAB Xpress Community. Click the “EXAMPLES” button in the upper right quadrant of the IDE.

Once you find an example that suits your interest, Click the “Open” tab to launch the example in the MPLAB Xpress IDE.

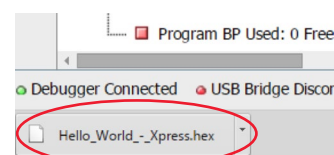


2 Compile Your Code

Press the “Make and Program Device” icon in the upper left quadrant of the IDE.



A project_name.hex file will be generated and placed into the “Downloads” directory of your PC.



3 Program the MPLAB Xpress Evaluation Board

Connect the MPLAB Xpress Evaluation Board to your PC with a Micro-USB cable. The MPLAB Xpress Evaluation Board will appear as a USB mass storage device or FLASH drive.

Copy the generated .hex file to the root directory** of the MPLAB Xpress Evaluation Board’s FLASH drive.

Note: The MPLAB Xpress Evaluation Board only recognizes files placed in the root directory.

Perform a hard reset using the RESET button on the board.

OPTION 2: Log in as a Registered User

To take full advantage of MPLAB Xpress, log in using your myMicrochip username and password. If you don't have an account, just click on the "My Account" button and follow the instructions to create an account. Creating an account will enable you to save your projects for future use, generate code with MPLAB Code Configurator (MCC), and program/debug a Curiosity Development Board and PICKit™ 3 In-Circuit Debugger.

Test Drive
No Hardware Needed

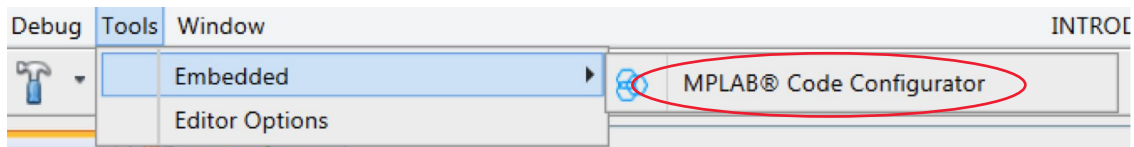
Request FREE
Xpress Evaluation Board
Limited Availability

My Account
Login/Register

1 Accelerate Your Design with MPLAB Code Configurator

MPLAB Xpress provides easy access to the powerful MPLAB Code Configurator. This GUI-based tool can create production-ready MCU peripheral setup and function code with point-and-click ease.

To access it, go to Tools > Embedded > MPLAB Code Configurator



For a quick tutorial on MPLAB Code Configurator, visit <http://www.microchip.com/MCC>.

2 Join the MPLAB Xpress Community

As part of your myMicrochip account, you have access to the MPLAB Xpress community. You can use it to:

- Share projects using the "Examples" section
- Search by Contributor, Application, Function, Device or Hardware
- Discuss ideas on the MPLAB Xpress Forum
- Learn how to optimize designs on the MPLAB Xpress Wiki

INTRODUCTION **EXAMPLES** **FORUM** **WIKI** DESIGN SUPPORT DOWNLOAD MPLABX FEEDBACK