

Spezifikation für Freigabe / specification for release

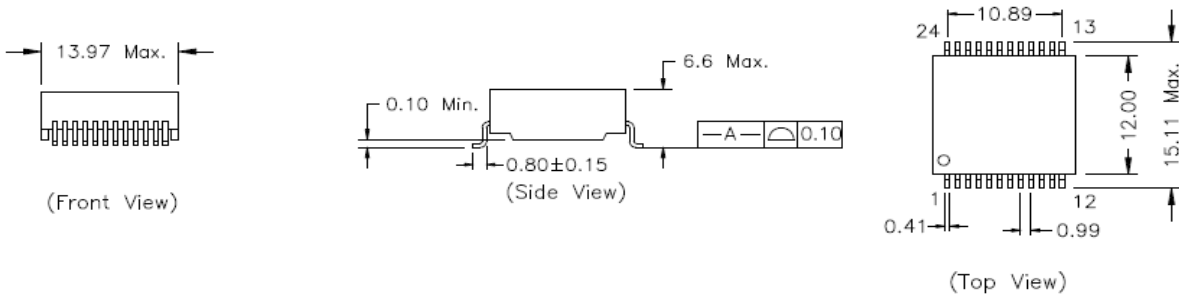
Kunde / customer :
 Artikelnummer / part number : **749050010A**
 Bezeichnung : **LAN-Übertrager WE-LAN**
 description : **LAN-Transformer WE-LAN**



DATUM / DATE : 2015-02-13

A Mechanische Abmessungen / dimensions :

	10G BaseT
--	------------------

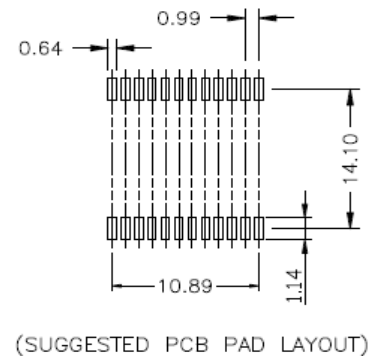


○ = Pin 1

B Elektrische Eigenschaften / electrical properties :

Eigenschaften / properties	Testbedingungen / test conditions		Wert / value	Einheit / unit	tol.
Induktivität / Inductance	100kHz / 100mV @ 0mA DC-Bias	OCL	200 µH	µH	min.
Übersetzungsverhältnis / Turns ratio	100kHz / 100mV	TR	1 : 1		3%
Insertion Loss	100k-10MHz	IL	-1,0	dB	max.
	100k-650MHz		-3,0		
Return Loss (load D+ to D-)	1-40MHz	RL	-18,0	dB	min.
	40-400MHz		-10,0		
	400-500MHz		-8,0		
	500-600MHz		-5,0		
Return Loss (load X+ to X-)	1-40MHz	RL	-18,0	dB	min.
	40-400MHz		-5,0		
	400-500MHz		-4,0		
Differential to Common Mode Rejection	1-250MHz	DCMR	-30	dB	min.
	250-500MHz		-22		
Crosstalk	1-100MHz	CT	-40	dB	min.
	100-500MHz	CT	-30	dB	min.

C Lötpad / soldering spec. :



D Prüfgeräte / test equipment :

HP4395A

E Testbedingungen / test conditions :

Luftfeuchtigkeit / humidity: 33%
 Umgebungstemperatur / temperature: +25°C

F Werkstoffe & Zulassungen / material & approvals :

Basismaterial / base material: Ferrit/ ferrite
 Draht / wire:
 Kontaktmaterial/ contact plating: Cu-Ni-Sn
 Gehäuse / case: UL94-V0
 Verguss / potting: UL94-V0

G Eigenschaften / general specifications :

Betriebstemp. / operating temperature: 0°C - + 70°C
 Hochspannungsprüfung / Hipot test: 1500Vrms 1min.
 Feuchteempfindlichkeit: MSL 1/ humiditi class: MSL 1

Freigabe erteilt / general release:	Kunde / customer		
		Jliu	Version 07 2015-08-18
		JaB	Version 06 2015-02-13
		MLe	Version 05 2013-12-16
Datum / date	Unterschrift / signature	MLe	Version 04 2013-08-27
		MLe	Version 03 2013-02-25
		MLe	Version 02 2011-08-11
		KSc	Version 01 2010-06-15
Geprüft / checked	Kontrolliert / approved	Name	Änderung / modification Datum / date

Würth Elektronik eiSos GmbH & Co.KG

D-74638 Waldenburg · Max-Eyth-Straße 1 - 3 · Germany · Telefon (+49) (0) 7942 - 945 - 0 · Telefax (+49) (0) 7942 - 945 - 400
<http://www.we-online.com>

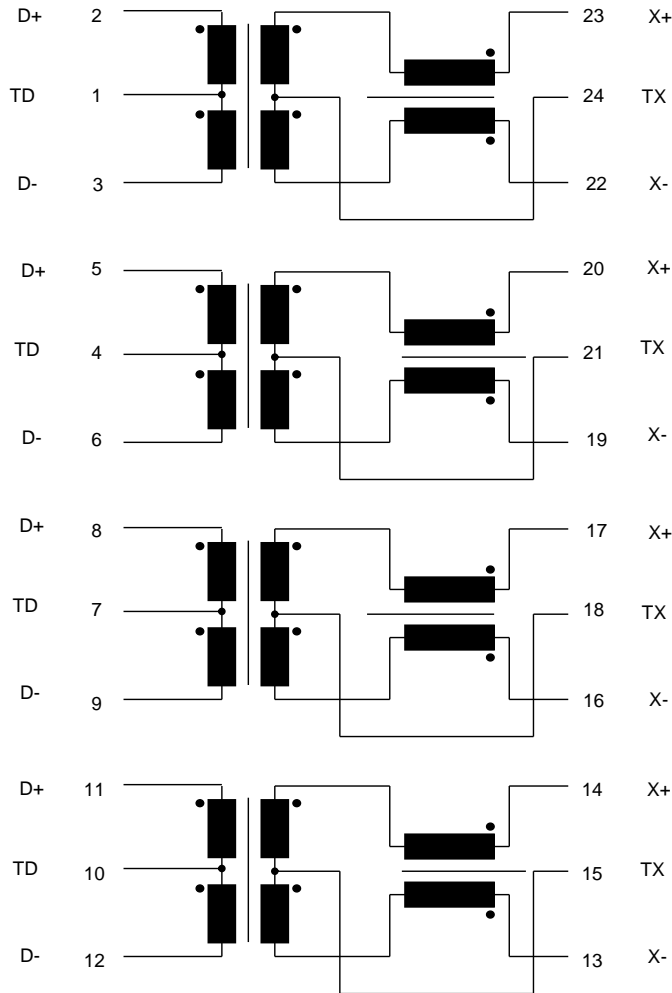
Spezifikation für Freigabe / specification for release

Kunde / customer :
 Artikelnummer / part number : **749050010A**
 Bezeichnung : **LAN-Übertrager WE-LAN**
 description : **LAN-Transformer WE-LAN**



WÜRTH ELEKTRONIK
 DATUM / DATE : 2015-02-13

H Schaltbild / Schematics :



Freigabe erteilt / general release:	Kunde / customer			
		Jliu	Version 07	2015-08-18
		JaB	Version 06	2015-02-13
Datum / date	Unterschrift / signature	MLe	Version 05	2013-12-16
		MLe	Version 04	2013-08-27
	Würth Elektronik	MLe	Version 03	2013-02-25
		MLe	Version 02	2011-08-11
Geprüft / checked	Kontrolliert / approved	KSc	Version 01	2010-06-15
		Name	Änderung / modification	Datum / date

Würth Elektronik eiSos GmbH & Co.KG

D-74638 Waldenburg · Max-Eyth-Straße 1 - 3 · Germany · Telefon (+49) (0) 7942 - 945 - 0 · Telefax (+49) (0) 7942 - 945 - 400
<http://www.we-online.com>

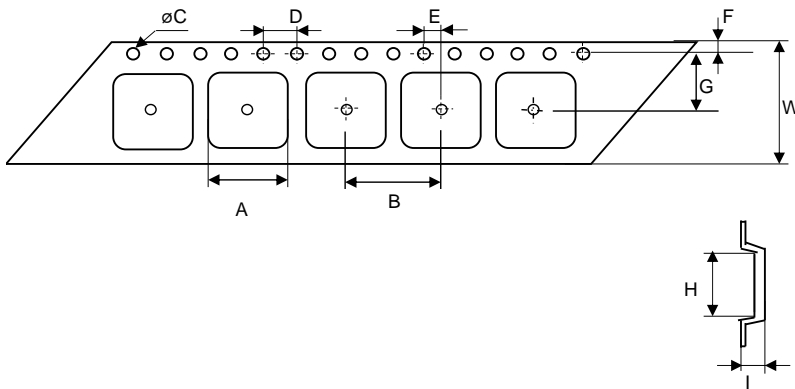
Spezifikation für Freigabe / specification for release

Kunde / customer :
 Artikelnummer / part number : **749050010A**
 Bezeichnung : **LAN-Übertrager WE-LAN**
 description : **LAN-Transformer WE-LAN**



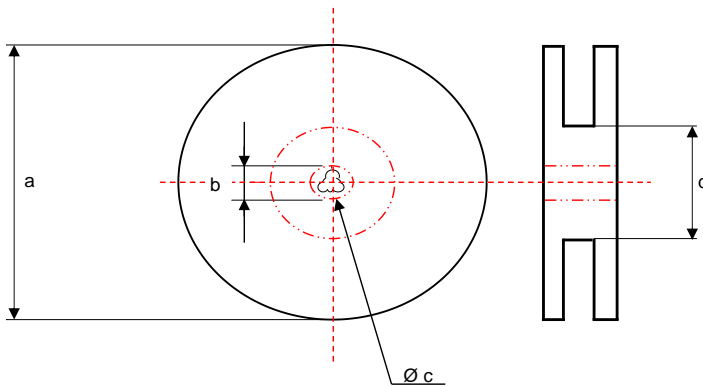
DATUM / DATE : 2015-02-13

I Rollenspezifikation / tape and reel specification :



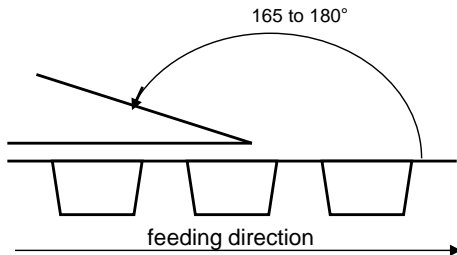
Gurtspezifikation / Tape specification:

A	15,8 ± 0,1	mm
B	20,0 ± 0,2	mm
C	1,50 +0,1 - 0,0	mm
D	4,00 ± 0,1	mm
E	2,00 ± 0,1	mm
F	1,75 ± 0,1	mm
G	11,5 ± 0,1	mm
H	14,0 ± 0,1	mm
I	6,4 ± 0,1	mm
W	24,0 ± 0,1	mm



Rollenspezifikation / Reel specification:

a	330,0 ± 2,0	mm
b	21,00 ± 0,8	mm
c	13,50 ± 0,5	mm
d	100,0 ± 1,0	mm



The force for tearing off cover tape is 10 to 130 grams in arrow direction

Freigabe erteilt / general release:	Kunde / customer		
	Jliu	Version 07	2015-08-18
Datum / date	Unterschrift / signature		
	JaB	Version 06	2015-02-13
Geprüft / checked	Würth Elektronik		
	MLe	Version 05	2013-12-16
	MLe	Version 04	2013-08-27
	MLe	Version 03	2013-02-25
	MLe	Version 02	2011-08-11
	KSc	Version 01	2010-06-15
	Name	Änderung / modification	Datum / date

This electronic component has been designed and developed for usage in general electronic equipment. Before incorporating this component into any equipment where higher safety and reliability is especially required or if there is the possibility of direct damage or injury to human body, for example in the range of aerospace, aviation, nuclear control, submarine, transportation, (automotive control, train control, ship control), transportation signal, disaster prevention, medical, public information network etc. Würth Elektronik eiSos GmbH must be informed before the design-in stage. In addition, sufficient reliability evaluation checks for safety must be performed on every electronic component which is used in electrical circuits that require high safety and reliability functions or performance.

Würth Elektronik eiSos GmbH & Co.KG

D-74638 Waldenburg · Max-Eyth-Straße 1 - 3 · Germany · Telefon (+49) (0) 7942 - 945 - 0 · Telefax (+49) (0) 7942 - 945 - 400
<http://www.we-online.com>