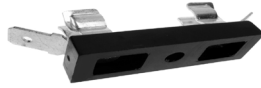


FUSES & FUSEHOLDERS

6.3x32mm (1/4"x1 1/4") Chassis Mounting Fuseholder

- Centre hole fixing
- 6.3 x 32mm fuse
- High current rating
-  approved

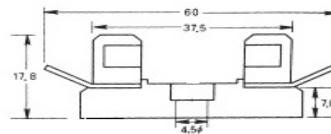
CFH16



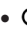
SPECIFICATION

Rating	30A/300V
Contacts/Resistance	Brass tin nickel plated, 500MΩ
Moulding	UL94-V0 Flame retardant, Phenolic thermosetting resin

TYPE NO.	FUSE SIZE
CFH16	chassis mounting 15A fuseholder



Multi-size Inline Fuseholder

- Inline type fuseholder
- Accepts 5 x 20mm, 6.3 x 32mm (1 1/4" x 1/4") and 6.3 x 25mm (1/4" x 1") fuses
- Allows own choice of wire
- Bayonet type cover
-  approved

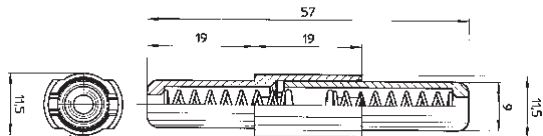
CFH10



TYPE NO.	FUSE SIZE
CFH10-	6.3 x 32mm
	6.3 x 25mm
	5 x 20mm

SPECIFICATION

Rating	6.3A/250V
Contacts	Tinned nickel plated Brass
Moulding	UL94-HB PA6
Dielectric strength	1.5kV
Operating power	1.6W
Insulation Resistance	>100MΩ



PCB
TERMINAL
BLOCKS

INTER-
CONNECTION

FUSES &
FUSE-
HOLDERS

LEDs &
INDICATORS

MINIATURE
SWITCHES

LIMIT &
SAFETY
SWITCHES

CONTROL
PRODUCTS

INTERFACE
MODULES &
SUPPORTS

RELAY
BASES

ENCLOSURES

BATTERIES

TRANS-
FORMERS